



To: Prospective Bidders
From: Wold Architects and Engineers
Date: March 31, 2022
Comm. No: 216054

Subject: Addendum No. 3 for Bidding Documents for the
Lift Station Generator Enclosure
Wrangell, Alaska

BIDS DUE APRIL 12, 2022 AT 2:00 P.M.

This addendum forms a part of the Contract Documents dated January 24, 2022. Acknowledge receipt of this Addendum on the space provided on the Bid Form. Failure to do so may result in disqualification of Bid.

This Addendum consists of one (1) typed sheets and attachments:
Specifications: 00 03 00, 07 46 46
Drawings: A2.00b, A5.201

PROJECT MANUAL

1. **SPECIFICATION SECTION 00 30 00 NOTICE INVITING BIDS**
 - A. Reissued this addendum.
2. **SPECIFICATION SECTION 07 46 46 FIBER-CEMENT SIDING**
 - A. Reissued this addendum.

DRAWINGS

1. **DRAWING A2.00b MAIN LEVEL DEMOLITION PLAN, FLOOR PLAN & ELEVATIONS**
 - A. Reissued this addendum.
2. **DRAWING A5.201 WALL SECTIONS, TYPES AND DETAILS**
 - A. Reissued this addendum.

END OF ADDENDUM #3

SECTION 000300 - NOTICE INVITING BIDS

OBTAINING CONTRACT DOCUMENTS. The Contract Documents are entitled:

Lift Station Generator Enclosure
Wood Street
Wrangell, Alaska 99929

Notice is hereby given that the City and Borough of Wrangell, Alaska will receive sealed bids for the construction of **Lift Station Generator Enclosure**.

The Contract Documents may be downloaded free of charge on the City & Borough of Wrangell website (www.wrangell.com) under the Bids and RFPs section. Downloading Contract Documents from the City & Borough of Wrangell's website requires registration with the Borough Clerk to be placed on the Plan Holders List and to ensure receipt of subsequent Addenda. Failure to register may adversely affect your proposal. It is the Offeror's responsibility to ensure that they have received all Addenda affecting this Solicitation. To be registered, contact the Borough Clerk at 907-874-2381; Borough Clerks Office, 205 Brueger Street, Wrangell, Alaska 99929; or at clerk@wrangell.com.

DESCRIPTION OF WORK. WORK consists of all activities necessary to construct Lift Station Generator Enclosure and install ER Generator.

SITE OF WORK. The WORK is located at Wood Street in Wrangell, Alaska.

COMPLETION OF WORK. The OWNER will open the work site to the CONTRACTOR immediately following the Notice to Proceed. ~~Substantial completion must be reached by September 30, 2022.~~ *Substantial completion of the building is November 30, 2022. Completion and connectivity of Emergency Generator installation must be completed within 45 days of the delivery of the equipment. The City and Borough of Wrangell anticipate the Emergency Generator to be delivered October 15, 2022.*

BIDDING, CONTRACT, or TECHNICAL QUESTIONS. All communications relative to this WORK, prior to opening Bids, shall be directed to the following:

Amber Al-Haddad
Capital Facilities Director
Telephone: (907) 874-3902
Email: aal-haddad@wrangell.com

BID SECURITY. Each bid shall be accompanied by a bid bond, cashier's check or certified check made payable to the City and Borough of Wrangell in the amount of five percent (5%) of the total bid price. This serves as a guarantee that the Bidder, if its Bid is accepted, will promptly execute the Agreement. A Bid shall not be considered unless one of the forms of Bidder's security is enclosed with it.

RECEIPT OF BIDS. Sealed bids will be received by the City and Borough of Wrangell, Post Office Box 531, Wrangell, Alaska 99929, located at the Borough Clerk's Office, 205 Brueger Street, Wrangell, Alaska 99929, until 2:00 PM prevailing time on ~~March 30, 2022~~ *April 12, 2022*, at which time they shall be opened and read aloud. Opening date and time may be changed to a later date or time via Addendum. Clearly mark on the outside of the envelope "**Sealed Bid for Lift Station Generator Enclosure**".

SUBCONTRACTORS. The apparent low Bidder is required to complete and submit the following documentation within five (5) calendar days following the posting of bids by the City and Borough of Wrangell:

- Section 00360 - Subcontractor Report.

LIFT STATION GENERATOR ENCLOSURE

NOTICE INVITING BIDS

Page 000300-1

Reissued Addendum No. 1

Reissued Addendum No. 3

SECTION 000300 - NOTICE INVITING BIDS

CONTRACTOR'S LICENSE. All contractors are required to have a current Alaska Contractor's License, prior to submitting a Bid, and a current Alaska Business License prior to award of the bid.

BID TO REMAIN OPEN. The Bidder shall guarantee the Bid for a period of 60 Days from the date of Bid opening. Any component of the Bid including additive alternates may be awarded anytime during the 60 Days.

OWNER'S RIGHTS RESERVED. The OWNER reserves the right to reject any or all Bids, to waive any informality in a Bid, and to make award to the lowest responsive, responsible Bidder as it may best serve the interests of the OWNER.

OWNER: The City and Borough of Wrangell

By: _____
Jeff Good, Borough Manager

Date _____

END OF SECTION

SECTION 07 46 ~~00-46~~
FIBER-CEMENT SIDING

PART 1 - GENERAL

1.01 RELATED DOCUMENTS

- A. Drawings and general provisions of the Contract, including General and Supplementary Conditions and Division 01 Specification Sections, apply to this Section.

1.02 SUMMARY

- A. Section includes fiber-cement siding and trim.
- B. Rainscreen System Requirements: If required by fiber-cement siding manufacturer for full manufacturer's warranty of product, provide furring strips for rainscreen system as required by fiber-cement siding manufacturer's written installation instructions.
- C. Related Requirements:
1. Section 061000 "Rough Carpentry" for wood furring, grounds, nailers, and blocking.
 2. Section 072500 "Weather Barriers" for weather-resistive barriers.
 3. Section 074619 "Steel Siding" for horizontal steel lap siding, vented soffit, gutters, and downspouts.
 4. Section 079200 "Joint Sealants" for joint sealants.

1.03 COORDINATION

- A. Coordinate siding installation with flashings and other adjoining construction to ensure proper sequencing.

1.04 PREINSTALLATION MEETINGS

- A. Preinstallation Conference: Conduct conference at Project site.

1.05 ACTION SUBMITTALS

- A. Product Data: For each type of product.
1. Include construction details, material descriptions, dimensions of individual components and profiles, and finishes.
 2. Include installation methods, including nailing patterns.
- B. Samples for Initial Selection: For fiber-cement siding and trim including related accessories.
- C. Samples for Verification: For each type, color, texture, and pattern required.
1. 12-inch-long-by-actual-width Sample of siding.
 2. 12-inch-long-by-actual-width Sample of soffit.
 3. 12-inch-long-by-actual-width Samples of trim and accessories.

1.06 INFORMATIONAL SUBMITTALS

- A. Product Certificates: For each type of fiber-cement siding and trim.

- B. Product Test Reports: Based on evaluation of comprehensive tests performed by a qualified testing agency, for fiber-cement siding.
- C. Research/Evaluation Reports: For each type of fiber-cement siding required, from ICC-ES.

1.07 CLOSEOUT SUBMITTALS

- A. Maintenance Data: For each type of product, including related accessories, to include in maintenance manuals.

1.08 MAINTENANCE MATERIAL SUBMITTALS

- A. Furnish extra materials that match products installed and that are packaged with protective covering for storage and identified with labels describing contents.
 - 1. Furnish full lengths of fiber-cement siding and trim including related accessories, in a quantity equal to 2 percent of amount installed.

1.09 DELIVERY, STORAGE, AND HANDLING

- A. Deliver and store packaged materials in original containers with labels intact until time of use.
- B. Store materials on elevated platforms, under cover, and in a dry location.

PART 2 - PRODUCTS

2.01 FIBER-CEMENT SIDING

- A. General: ASTM C 1186, Type A, Grade II, fiber-cement board, noncombustible when tested according to ASTM E 136; with a flame-spread index of 25 or less when tested according to ASTM E 84.
 - 1. Basis-of-Design Manufacturer: Subject to compliance with requirements, provide Allura of Plycem; Fiber Cement Siding Products, or equal products by one of the following:
 - a. CertainTeed Corporation.
 - b. GAF Materials Corporation.
 - c. MaxiTile, Inc.
 - d. Nichiha Fiber Cement.
 - e. Norandex Building Materials Distribution, Inc.
- B. Fiber Cement Siding specification is based on Allura of Plycem; Fiber Cement Siding Products.
- C. Source Limitations: Obtain products, including related accessories, from single source from single manufacturer.
- D. Fiber Cement Board Panels - General: Allura Fiber Cement Board Panels consist of cement, recycled content and cellulose fiber formed under high pressure into boards with integral surface texture; complying with ASTM C 1186 Type A Grade II; machined edges; for nail attachment.
 - 1. Surface Burning Characteristics: Flame spread index of 0, smoke developed index of 5, maximum; when tested in accordance with ASTM E 84 (Class I/A).
 - 2. Flammability: Noncombustible, when tested in accordance with ASTM E 136.
 - 3. Flexural Strength: At least 1450 psi when in equilibrium condition, and at least 1015 psi when in wet condition, tested in accordance with ASTM C 1185.
 - 4. Coefficient of Thermal Expansion: Less than 1×10^{-5} /inch/inch/degree F, when tested in accordance with ASTM E 228.
 - 5. Freeze Thaw Resistance: At least 80 percent flexural strength retained, when tested in accordance with ASTM C 1185.

6. UV Resistance: No cracking, checking, or erosion, when tested for 2000 hours in accordance with ASTM G 26.
7. Water Tightness: No water droplets on underside, when tested in accordance with ASTM C 1185.

E. Basis of Design: Allura Vertical Siding.

1. All siding and trim to match existing Medical Center trim. Contractor to verify match of siding and color prior to order.
 - a. Prefinished Colormax Certaineed Weatherboard Fiber Cement Soffit. 12” vented soffit w/ 24” solid soffit. Color to match existing “Heritage Clay” on Medical Center clinic.
 - b. Prefinished Colormax Certaineed Weatherboard Vertical Siding, smooth vertical panel with battens at 12” o.c. Split Certaineed 5 1/2” 4/4 smooth trim boards into three pieces to form 1 7/8” battens. Color for vertical siding and battens to match “Hardieplank,” “Country Land Red JH90-20.”

2.02 ACCESSORIES

A. Trim: Allura Trim/Fascia Board

1. Size:
 - a. Thickness 7/16 inch plus or minus (1 mm).
 - b. Width:
 - 1) 3-1/2 inch - Trim.
 - 2) 10 inch - Fascia.
 - c. Length: 12 feet plus or minus 1/8 inch.
 - d. Color: 3 1/2 inch trim and 10 inch fascia to match “Newport Taupe” on Medical Center.
2. Provide the following trim:
 - a. Running trim as indicated on Drawings.
 - b. Outside corners, overlapping siding.
3. Sealant/Primer: Manufacturer's primary Sealant/Primer.

B. Sealant: Paintable, 100 percent acrylic latex caulk complying with ASTM C 920.

C. Field finish paint: 100% acrylic latex as specified in Section 09 90 00.

D. Flashing: Provide flashing complying with Section 076200 "Sheet Metal Flashing and Trim" at window and door heads and where indicated.

E. Fasteners: Provide fasteners and fastening patterns as required by manufacturer's ICC Research/Evaluation Report; hot-dipped galvanized or stainless steel.

PART 3 - EXECUTION

3.01 EXAMINATION

A. Examine substrates for compliance with requirements for installation tolerances and other conditions affecting performance of fiber-cement siding and trim and related accessories.

- B. Proceed with installation only after unsatisfactory conditions have been corrected.

3.02 PREPARATION

- A. Clean substrates of projections and substances detrimental to application.

3.03 INSTALLATION

- A. Install in accordance with manufacturer's instructions and as indicated on Drawings.
 - 1. Read warranty and comply with all terms necessary to maintain warranty coverage.
 - 2. Install in accordance with conditions stated in model code evaluation report applicable to location of project.
 - 3. Use trim details indicated on drawings.
 - 4. Touch up all field cut edges before installing.
 - 5. Pre-drill nail holes if necessary to prevent breakage.
- B. Allow space between both ends of siding panels that butt against trim for thermal movement; seal joint between panel and trim with exterior grade sealant.
- C. Allow space between both ends of siding panels that butt against trim for thermal movement; seal joint between panel and trim with exterior grade sealant.
- D. Joints in Horizontal Siding: Avoid joints in lap siding except at corners; where joints are inevitable stagger joints between successive courses.
- E. Joints in Vertical Siding: Install Z-flashing in horizontal joints between successive courses of vertical siding.
- F. Furred Installation: Leave space at top and bottom open; top may be behind soffit; at bottom install insect screen overopening by wrapping a strip of screen over bottom ends of vertical furring strips.
- G. Install sheet metal flashing above louver casings and horizontal trim in field of siding.
- H. Do not install siding less than 6 inches from surface of ground nor closer than 1 inch to roofs, patios, porches, and other surfaces where water may collect.
- I. Install joint sealants as specified in Section 079200 "Joint Sealants" and to produce a weathertight installation.
 - 1. After installation, seal all joints except lap joints of lap siding. Seal around all penetrations. Paint all exposed cut edges.

3.04 ADJUSTING AND CLEANING

- A. Remove damaged, improperly installed, or otherwise defective materials and replace with new materials complying with specified requirements.
- B. Clean finished surfaces according to manufacturer's written instructions and maintain in a clean condition during construction.

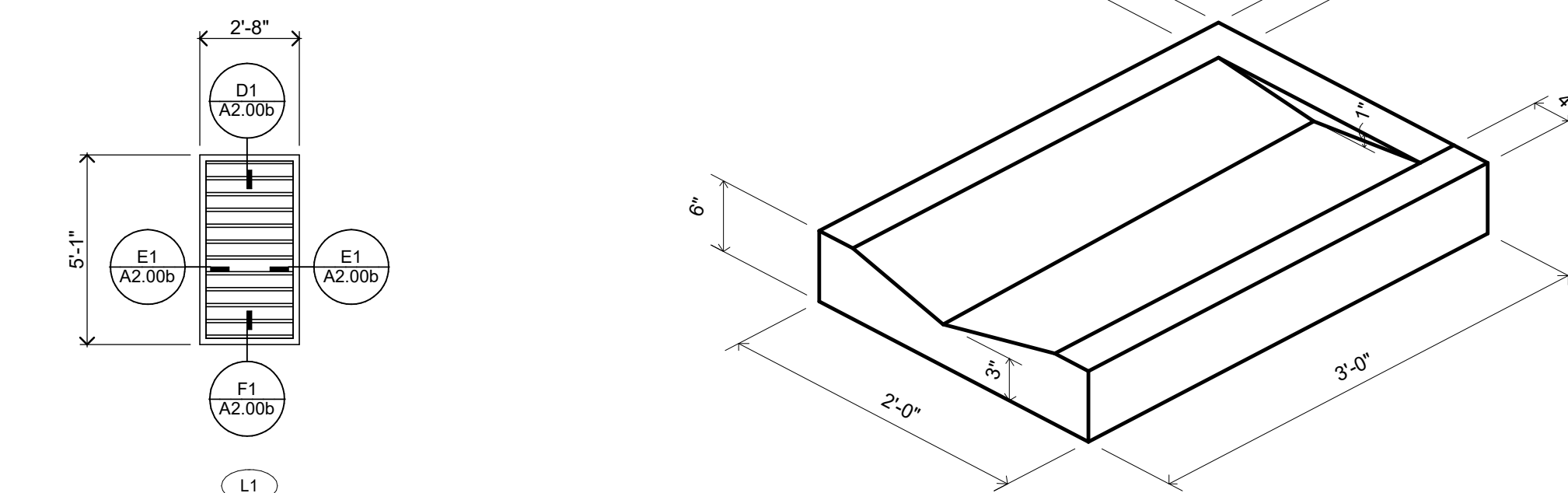
3.05 FACTORY FINISH TOUCH UP

- A. Factory Finish Touch Up: Match touch up color to siding color through use of manufacturer's branded touch-up kits.
 - 1. Apply touch up paint to cut edges in accordance with manufacturer's printed instructions.
 - 2. Touch-up nicks, scrapes, and nail heads in pre-finished siding using the manufacturer's touch-up kit.
 - 3. Touch-up of nails shall be performed after application, but before plastic protection wrap is removed to prevent spotting of touch-up finish.

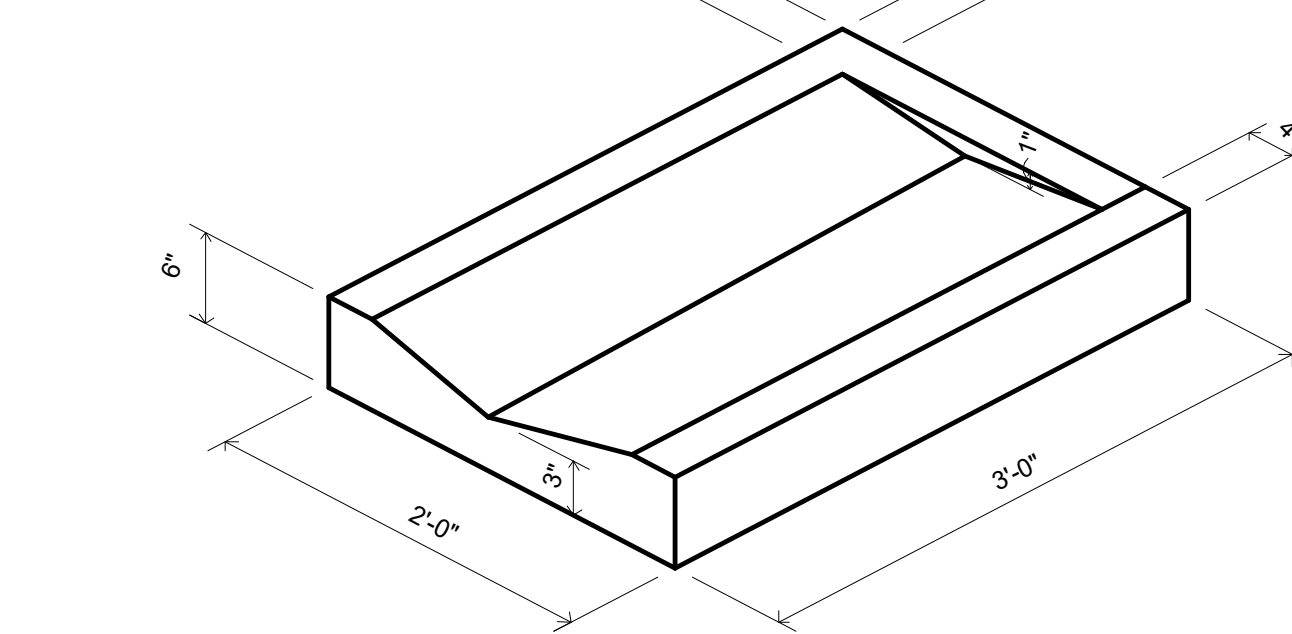
4. Use touch-up paint sparingly. If large areas require touch-up, replace the damaged area with new pre-finished siding.

END OF SECTION 07 46 00-46

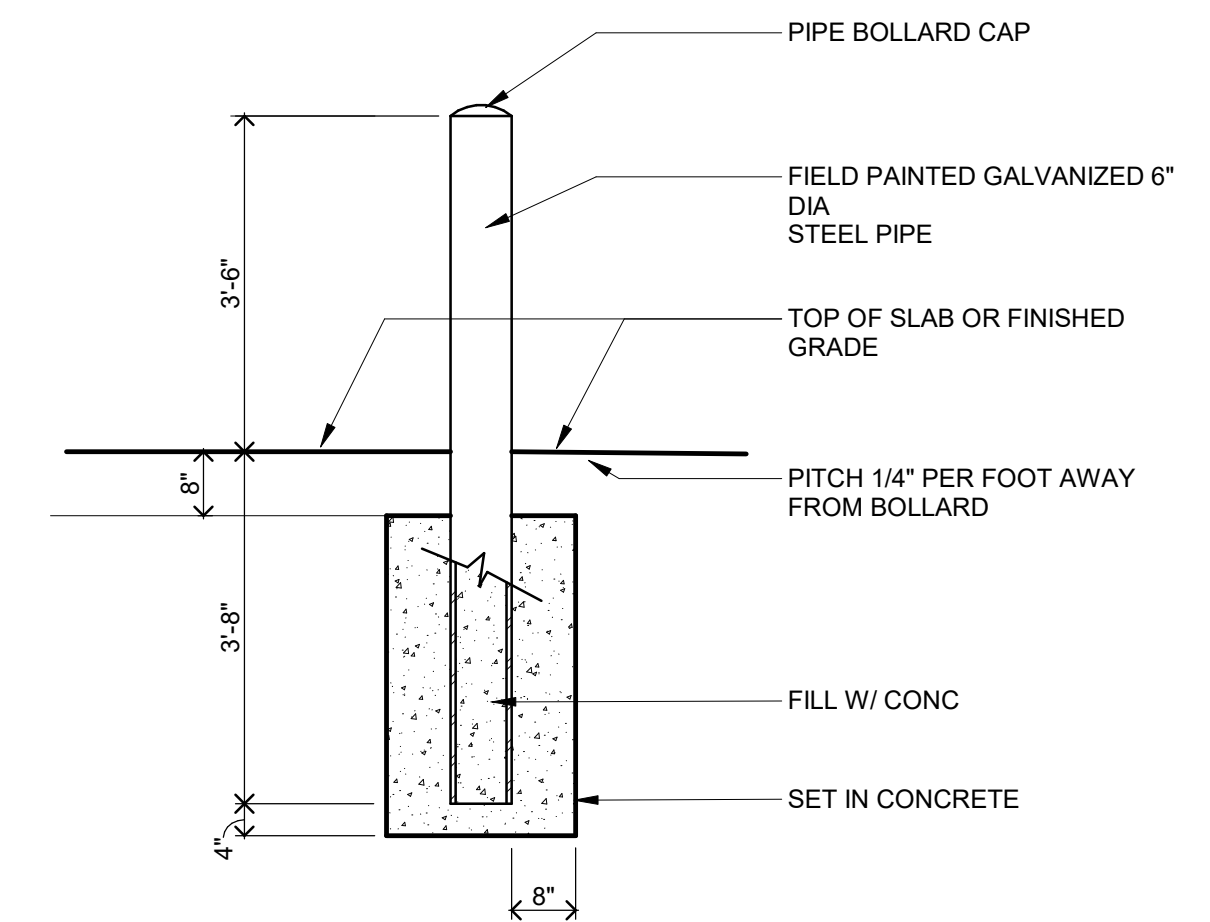
MN



B1 LOUVER TYPES
1/4" = 1'-0"



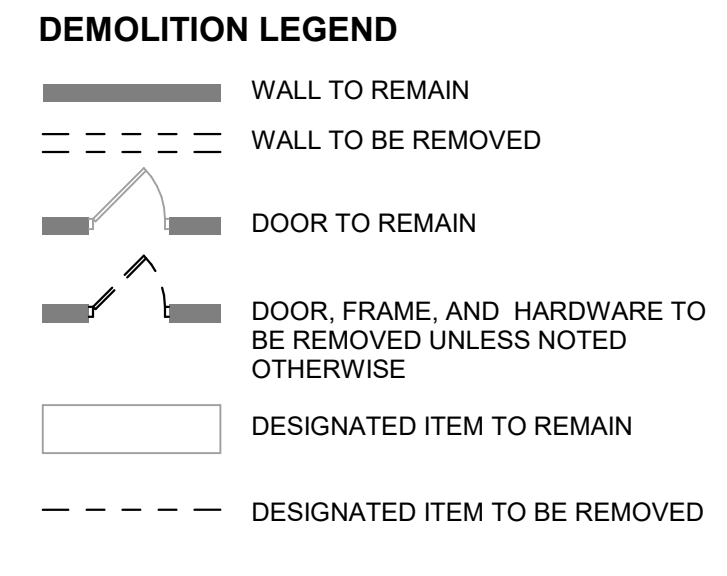
B2 CONCRETE SPLASHBLOCK
1" = 1'-0"



B4 BOLLARD DETAIL
1/2" = 1'-0"

- DEMOLITION GENERAL NOTES**
- DEMOLITION NOTES AND PLANS ARE PROVIDED AS A GUIDE ONLY. CONTRACTOR TO VERIFY EXISTING CONDITIONS AND EXAMINE DRAWINGS AND DETAILS TO DETERMINE EXTENT AND LIMITS OF DEMOLITION REQUIRED TO ACCOMMODATE NEW CONSTRUCTION.
 - CONTRACTOR IS RESPONSIBLE FOR COORDINATION OF ALL ASPECTS OF DEMOLITION. CONTRACTOR TO REVIEW ALL DRAWINGS FOR ADDITIONAL DETAILS AND CONSTRUCTION SEQUENCING NOTES. MECHANICAL AND ELECTRICAL DEMOLITIONS ARE SHOWN ON MECHANICAL AND ELECTRICAL DRAWINGS.
 - REFER TO MECHANICAL AND ELECTRICAL FOR ADDITIONAL DEMOLITION NOTES.
 - CONTRACTOR TO COORDINATE DEMOLITION WITH DETAILS AND STRUCTURAL DRAWINGS TO INSTALL NEW LINTELS OR STRUCTURAL COMPONENTS TO SUPPORT EXISTING STRUCTURE.
 - PROVIDE AND COORDINATE ALL DEMOLITION AND RECONSTRUCTION WITH NEW WORK PLAN DIMENSIONS AND INSTALLATION OF NEW MATERIALS AND FINISHES, AS REQUIRED, WHETHER INDICATED ON DRAWINGS OR NOT.
 - PROVIDE SMOOTH AND CLEAN SUBSTRATE TO ALL AREAS RECEIVING NEW FINISHES. COORDINATE WORK WITH PLANS AND THE ROOM FINISH SCHEDULE.
 - ALL RELATED WOOD BLOCKING SUPPORT STRUCTURE, HARDWARE CONNECTION DEVICES, ADHESIVES, AND/OR MASTIC SHALL BE REMOVED FROM SURFACES AT ITEMS NOTED FOR REMOVAL. PROVIDE SURFACES ACCEPTABLE FOR PATCHING AND/OR NEW WORK.
 - DEMOLITION NOTES WITHOUT ARROWS INDICATE THAT THE NOTE APPLIES TO THE ENTIRE ROOM.

- DEMOLITION PLAN KEY NOTES:**
- PROTECT POWERED SIGN DURING CONSTRUCTION.
 - REMOVE ROCKS TO EXTENTS SHOWN. SALVAGE FOR REINSTALLATION.
 - EXISTING LIFT STATION TO REMAIN.



LIFT STATION GENERATOR ENCLOSURE
Wood St.,
Wrangell, AK 99929

City of Wrangell
Wood St, Wrangell, AK 99929

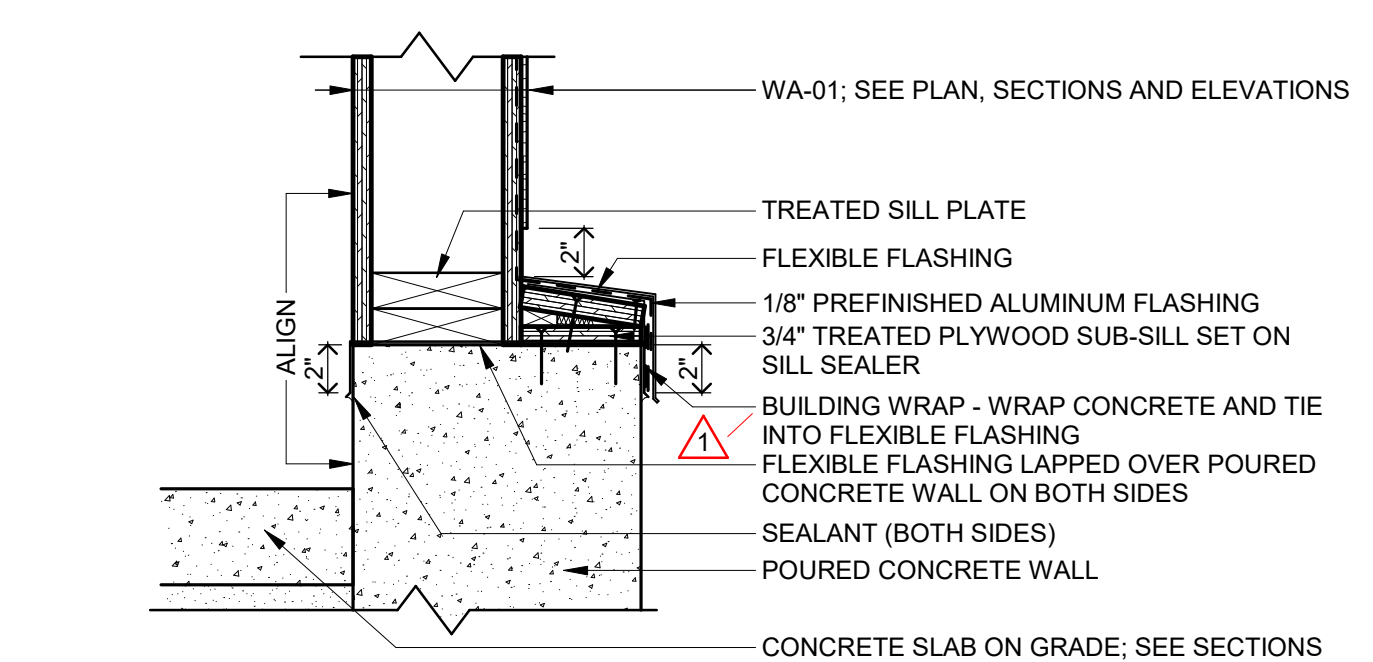


WOLD ARCHITECTS AND ENGINEERS
332 Minnesota Street, Suite W2000
Saint Paul, MN 55101
woldae.com | 651 227 7773

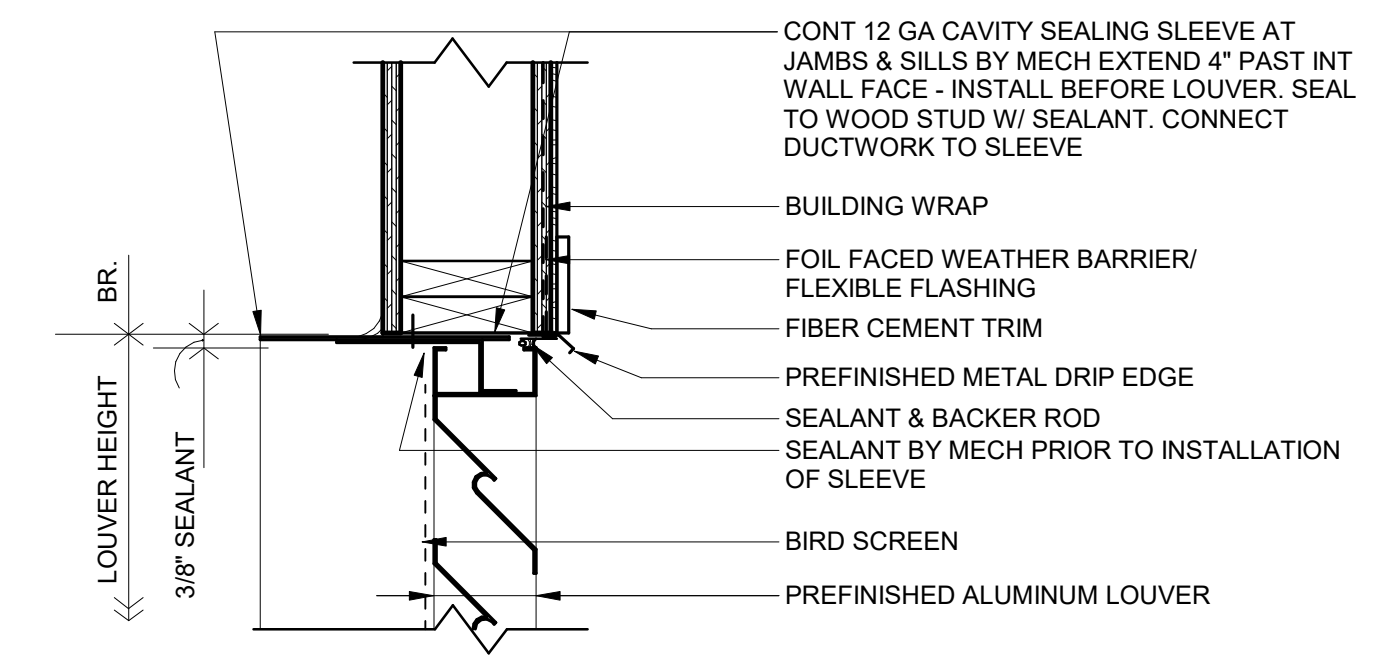
PSM CONSULTING ENGINEERS, INC.
2200 SIXTH AVENUE, SUITE 601
SEATTLE, WA 98121
P: 206.622.4580
www.psm-engineers.com



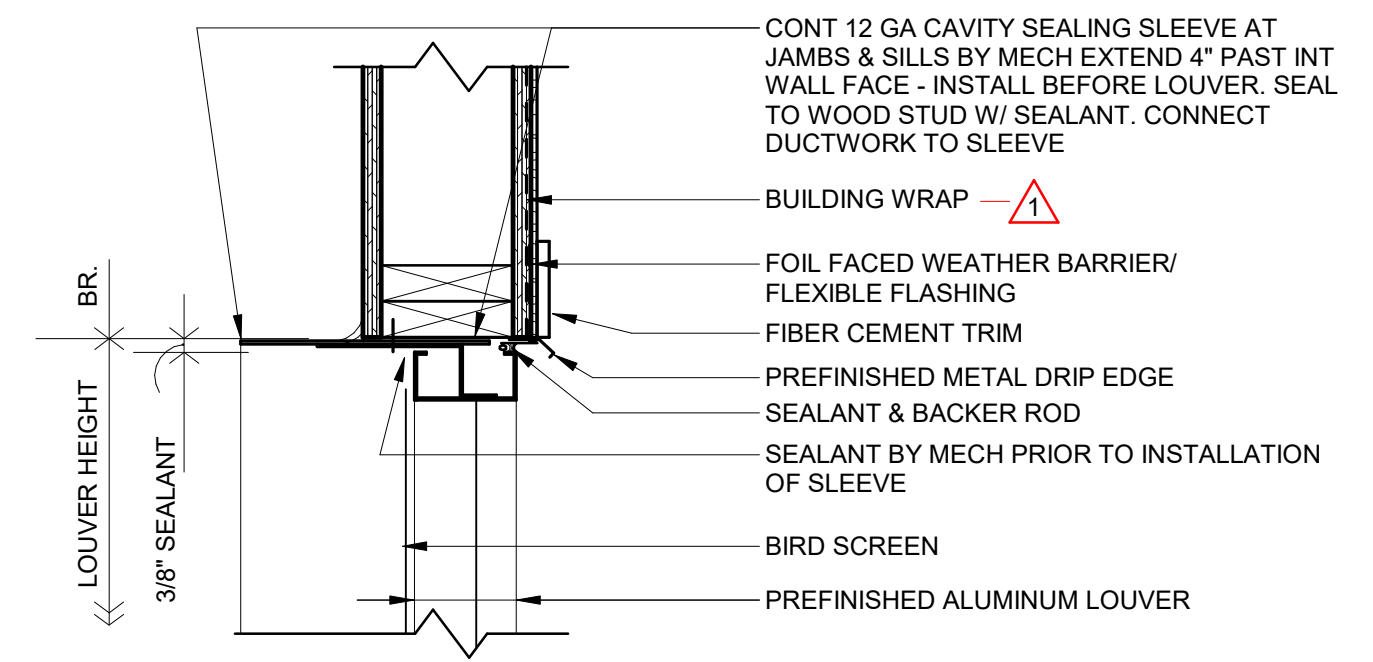
R&M ENGINEERING-KETCHIKAN, INC.
ENGINEERS GEOLOGISTS SURVEYORS



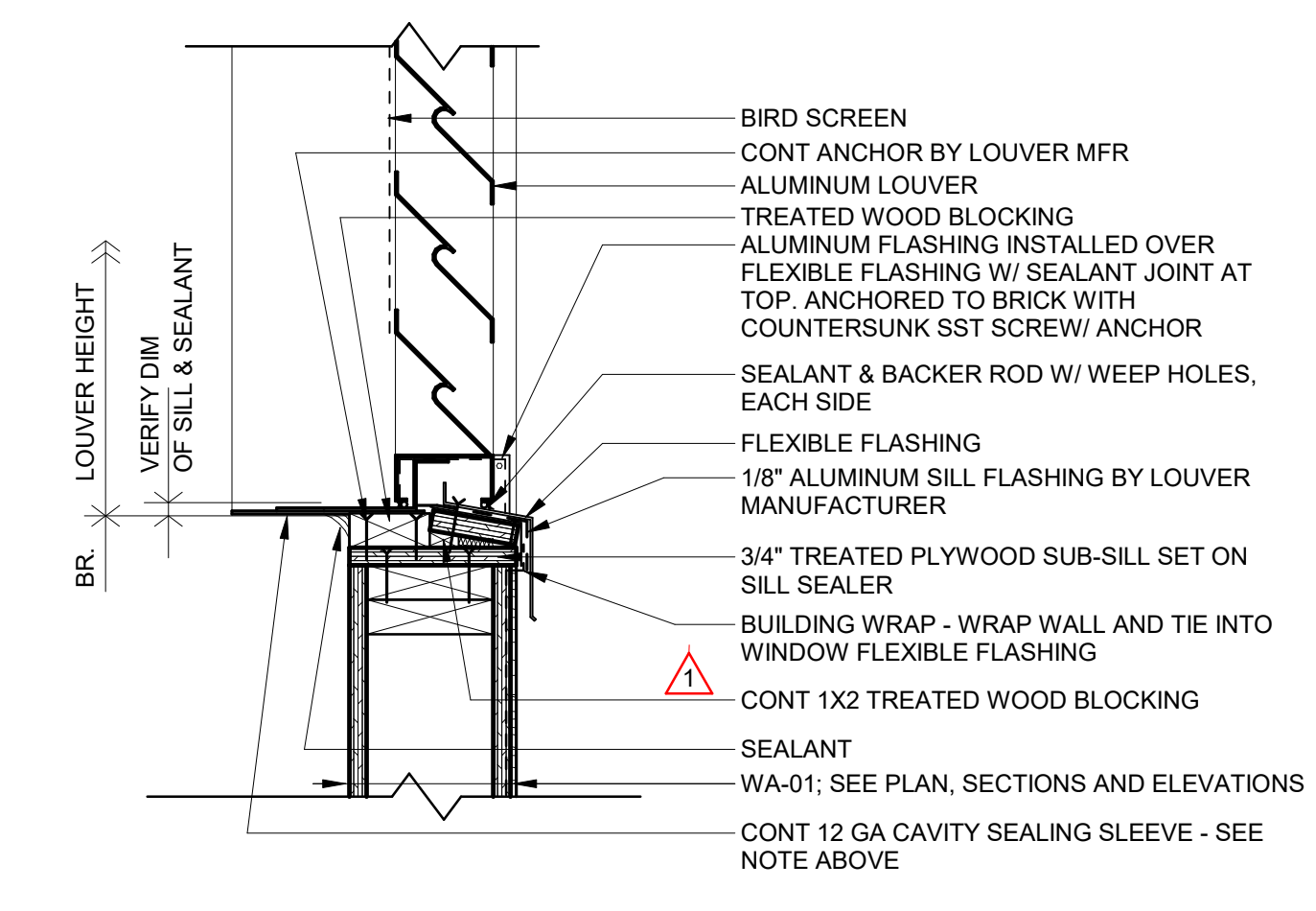
C1 FLASHING AT BASE OF WALL
1 1/2" = 1'-0"



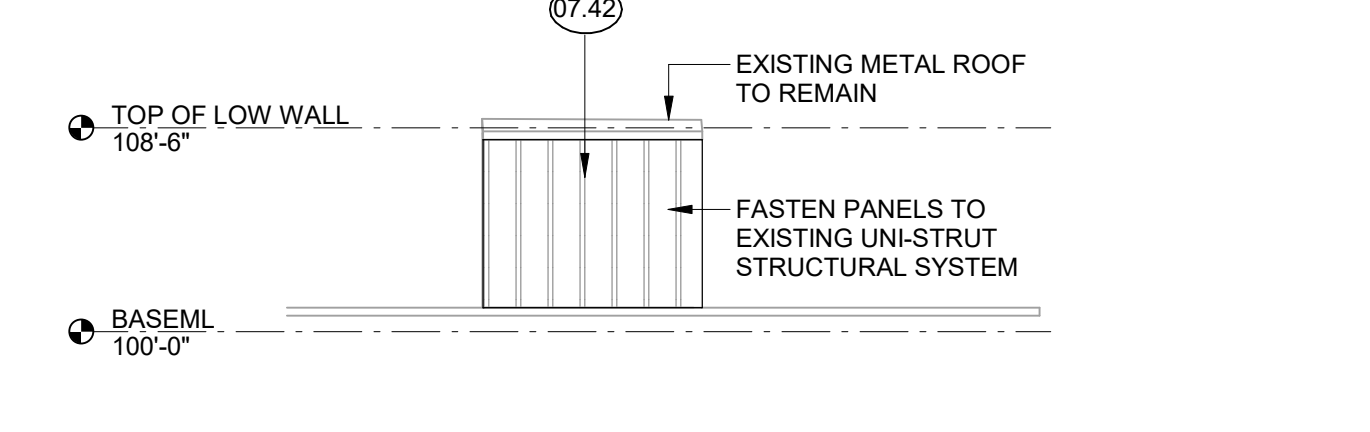
D1 LOUVER HEAD
1 1/2" = 1'-0"



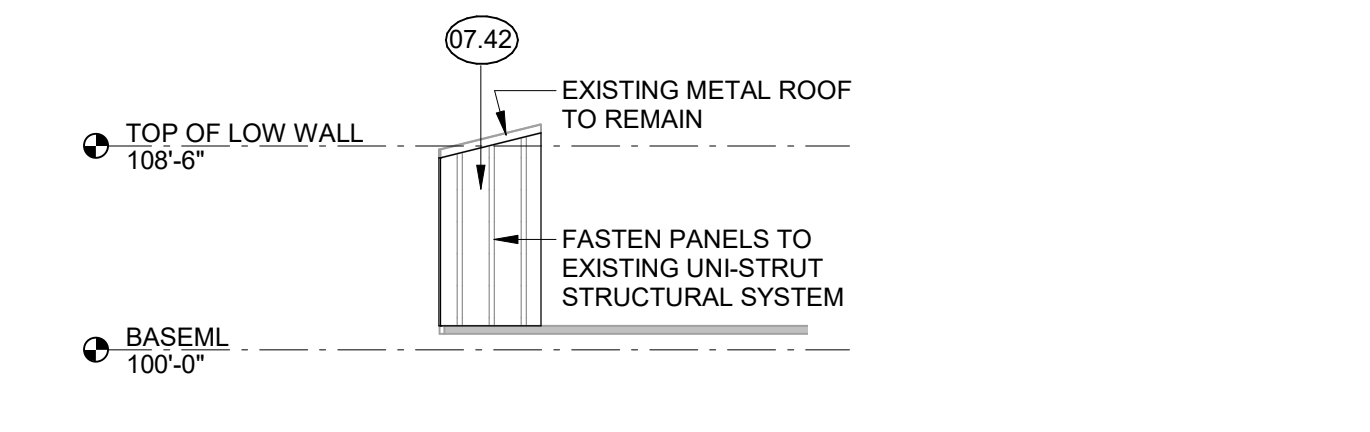
E1 LOUVER JAMB
1 1/2" = 1'-0"



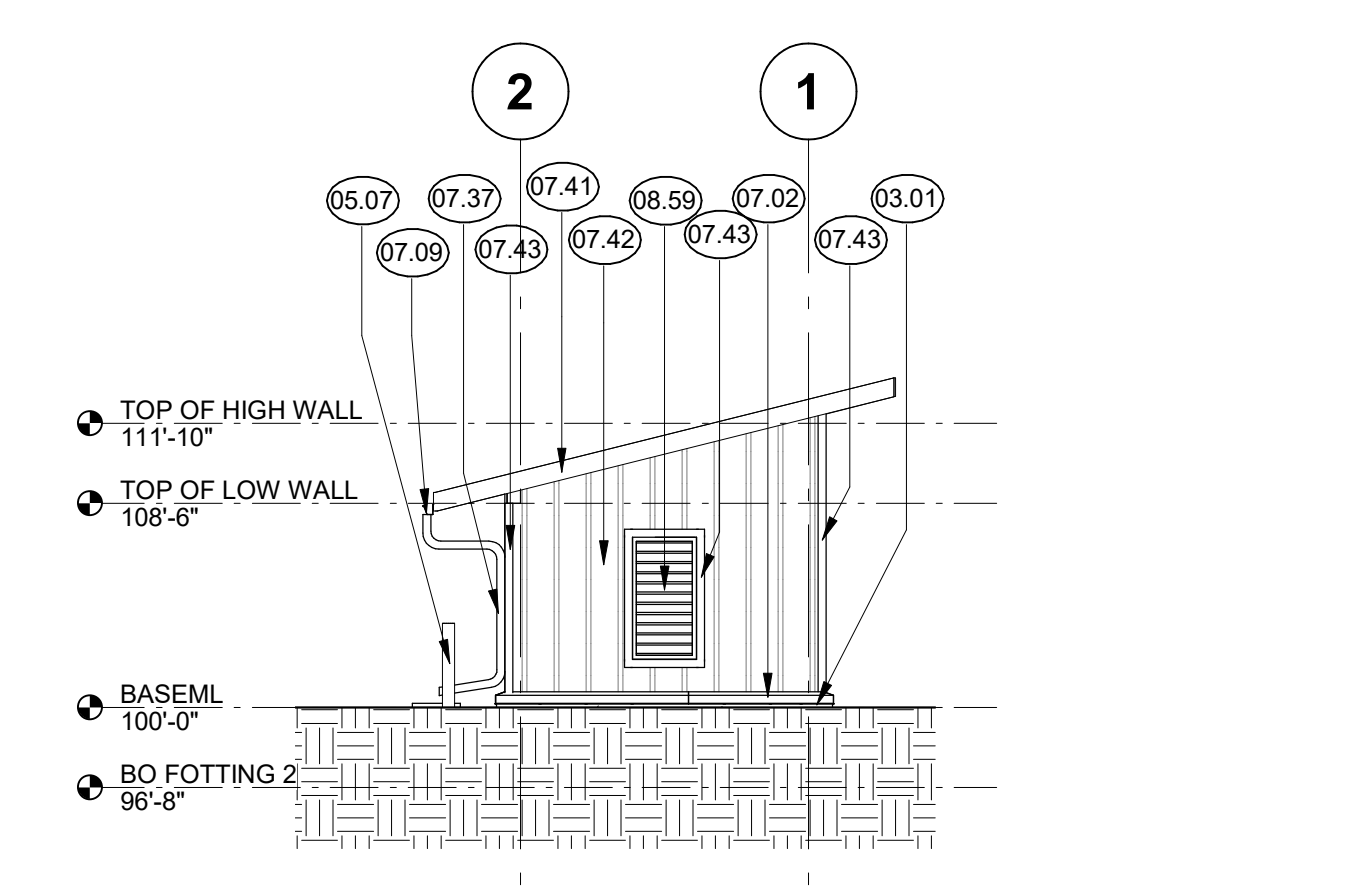
F1 LOUVER SILL
1 1/2" = 1'-0"



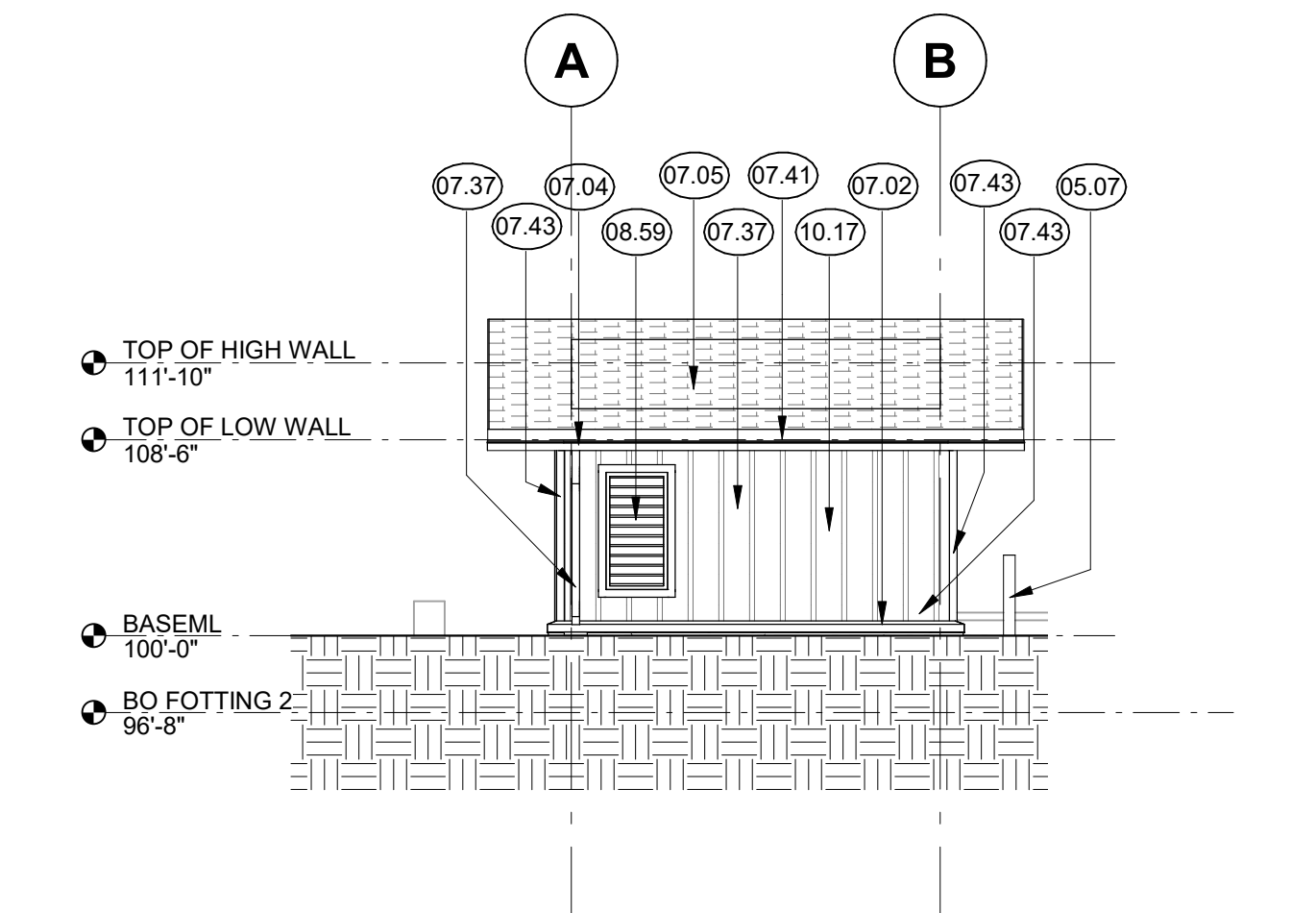
C3a LIFT STATION CONTROL ENCLOSURE - NE ELEVATION
1/8" = 1'-0"



C3 LIFT STATION CONTROL ENCLOSURE - NW ELEVATION
1/8" = 1'-0"



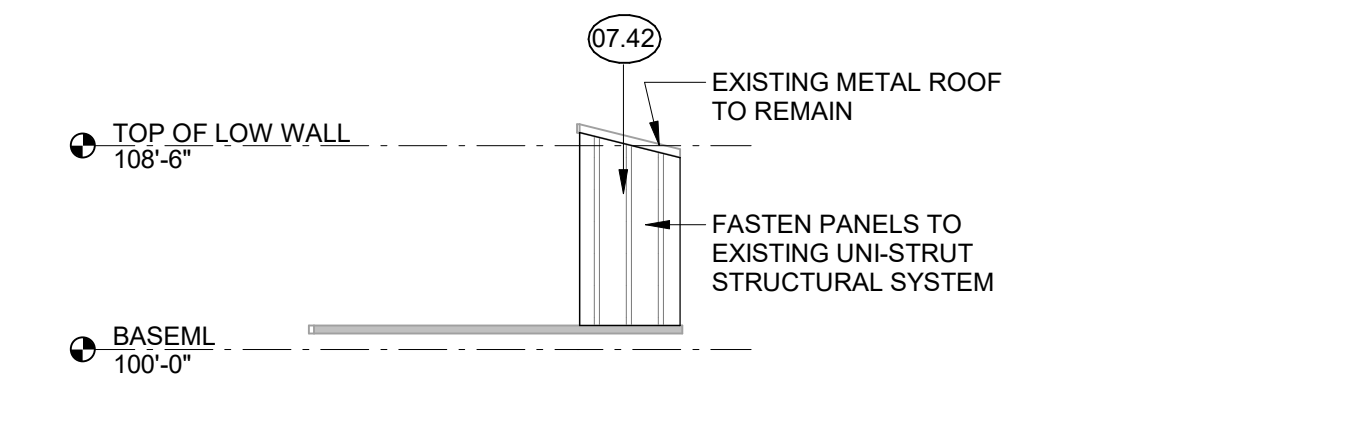
E3 GENERATOR - SOUTHEAST ELEVATION
1/8" = 1'-0"



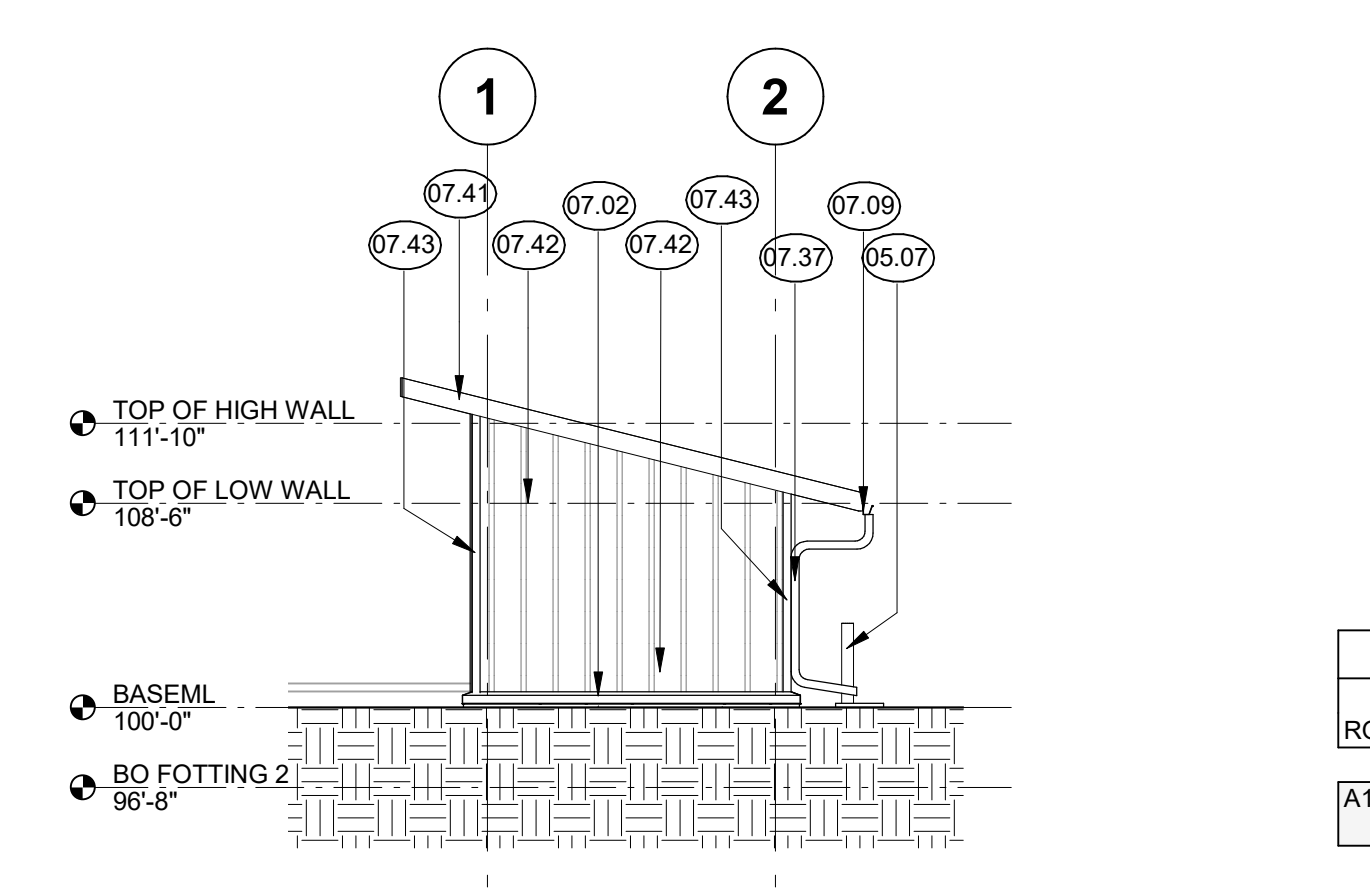
F3 GENERATOR - SOUTHWEST ELEVATION
1/8" = 1'-0"

MATERIALS KEY

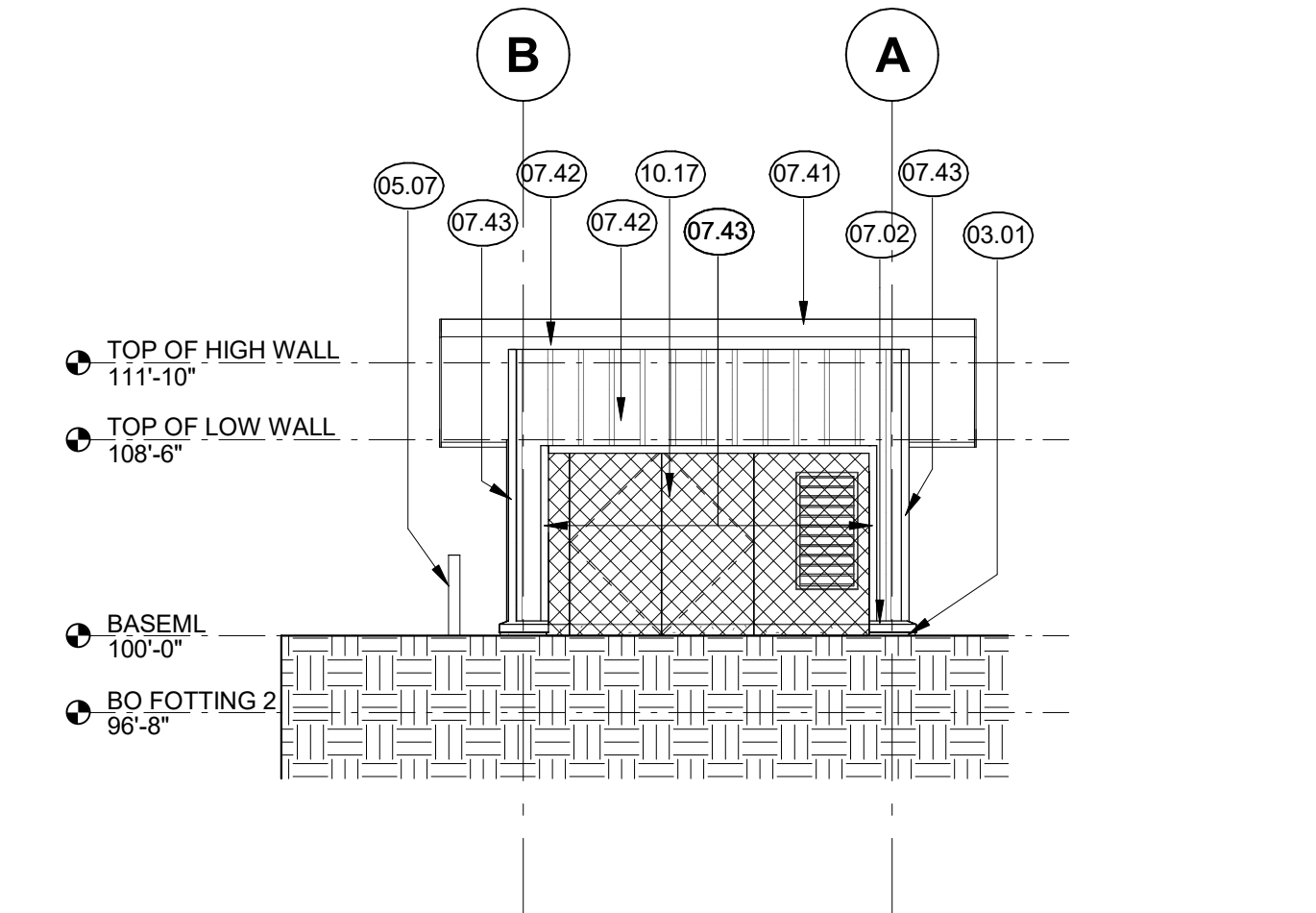
KEY	MATERIAL
03.01	CONCRETE
05.07	MISC METAL
07.02	PREFINISHED SHEET METAL FLASHING
07.04	PREFINISHED SHEET METAL GUTTER
07.05	ASPHALT SHINGLES
07.09	PREFINISHED RAINSCREEN PANEL
07.37	PREFINISHED SHEET METAL DOWNSPOUT
07.41	FIBER CEMENT FASCIA
07.42	FIBER CEMENT SIDING
07.43	FIBER CEMENT TRIM
08.59	PREFINISHED METAL LOUVER
10.17	GALVANIZED FENCE



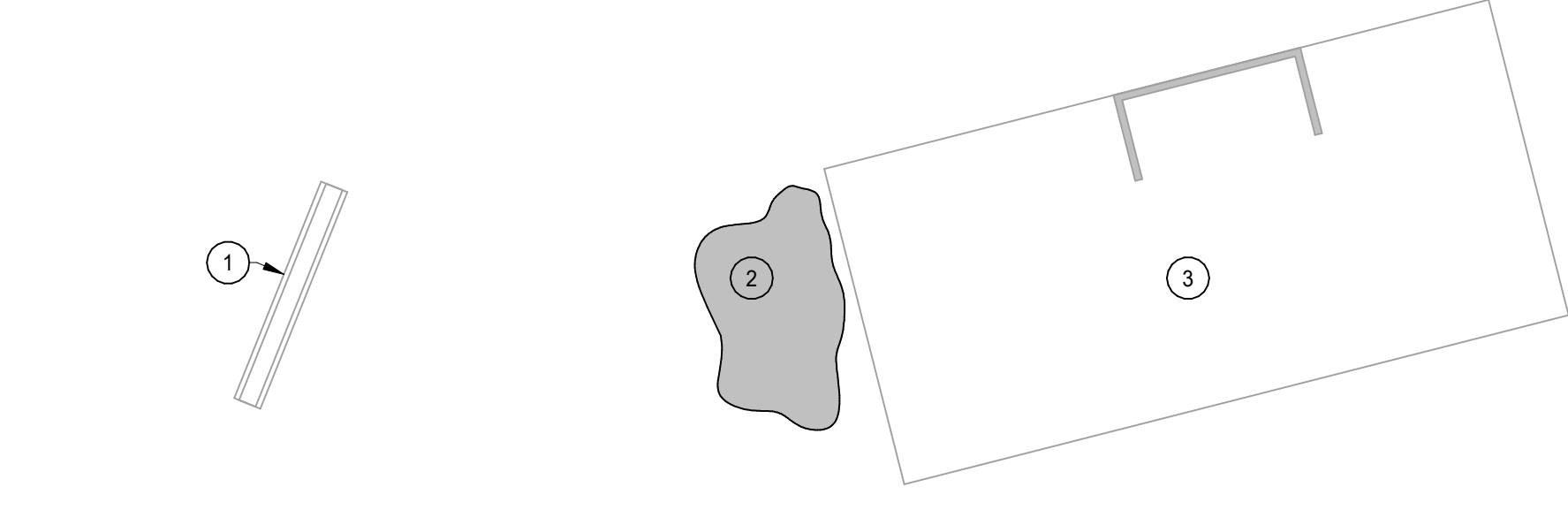
C5a LIFT STATION CONTROL ENCLOSURE - SE ELEVATION
1/8" = 1'-0"



E5 GENERATOR - NORTHWEST ELEVATION
1/8" = 1'-0"



F5 GENERATOR - NORTHEAST ELEVATION
1/8" = 1'-0"



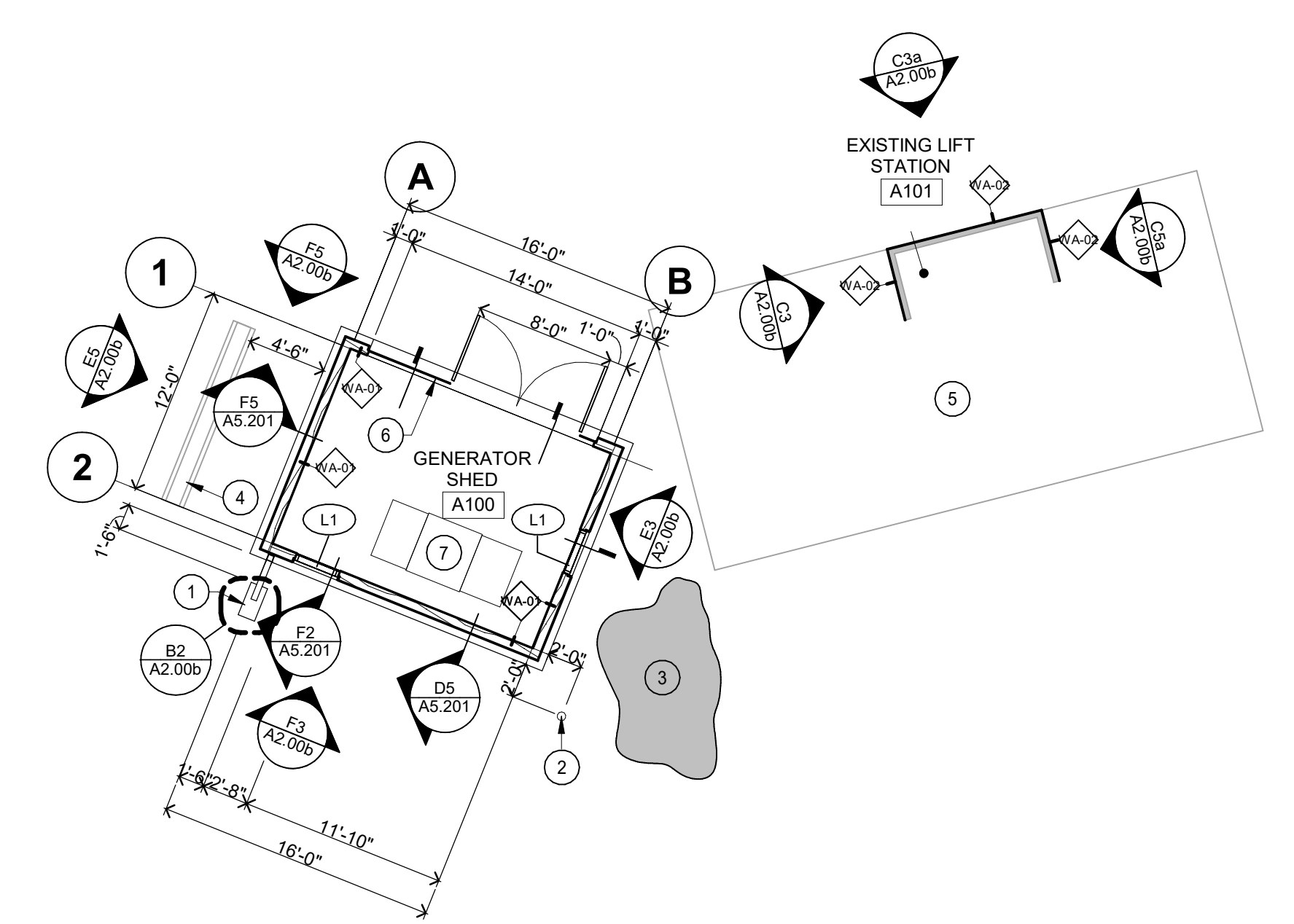
C6 GENERATOR DEMOLITION PLAN
1/8" = 1'-0"

- PLAN GENERAL NOTES**
- ALL PLAN DIMENSIONS ARE NOMINAL TO FACE OF WALL. WALL THICKNESSES ARE SHOWN NOMINAL. SEE WALL TYPES FOR ACTUAL THICKNESS.
 - COORDINATE SIZE AND LOCATION OF ALL DUCT AND SHAFT OPENINGS IN WALLS AND FLOORS W/ MECH. AND ELEC. PROVIDE ALL REQUIRED LINTELS FOR OPENINGS. SEE LINTEL SCHEDULE.
 - VERIFY LOCATION, SIZE AND QUANTITY OF ALL MECHANICAL AND ELECTRICAL EQUIPMENT PADS.

- FLOOR PLAN KEY NOTES:**
- SPLASH BLOCK - SEE DETAIL B2/A2.00b.
 - BOLLARD - SEE DETAIL B4/A2.00b.
 - RELOCATED ROCKS.
 - EXISTING MONUMENT SIGN TO REMAIN.
 - EXISTING LIFT STATION TO REMAIN.
 - REMOVABLE GALVANIZED CHAIN LINK FENCE WITH 42" GATE.
 - GENERATOR; COORDINATE WITH ELECTRICAL.

ROOM FINISH SCHEDULE

ROOM NO.	ROOM NAME	FLOOR	N WALL - TYP		E WALL		S WALL		W WALL		REMARKS
			MATL	FIN	MATL	FIN	MATL	FIN	MATL	FIN	
A100	GENERATOR SHED		CONC	CONC	PLYWOOD	HERITAGE CLAY	PLYWOOD	HERITAGE CLAY	PLYWOOD	HERITAGE CLAY	



F6 GENERATOR FLOOR PLAN
1/8" = 1'-0"



I hereby certify that this plan, specification or report was prepared by me or under my direct supervision and that I am a duly Licensed ARCHITECT under the laws of the State of MINNESOTA.

Josh Ripplinger
License Number: 46143 Date: 06/30/2022

Revisions

Description	Date	Num
Addendum 1	03/10/2022	1
Addendum 3	03/31/2022	2

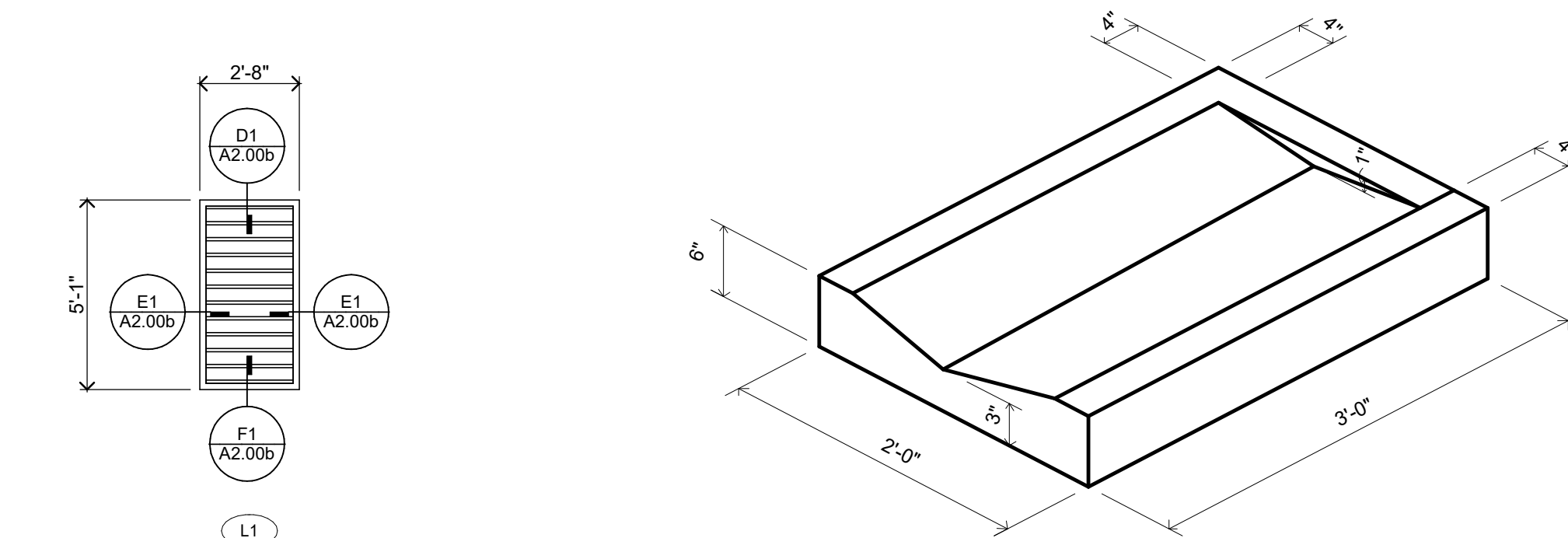
Comm: 216054
Date: 01/25/2022
Drawn: MS
Check: SM | JR

MAIN LEVEL DEMOLITION PLAN, FLOOR PLAN & ELEVATIONS

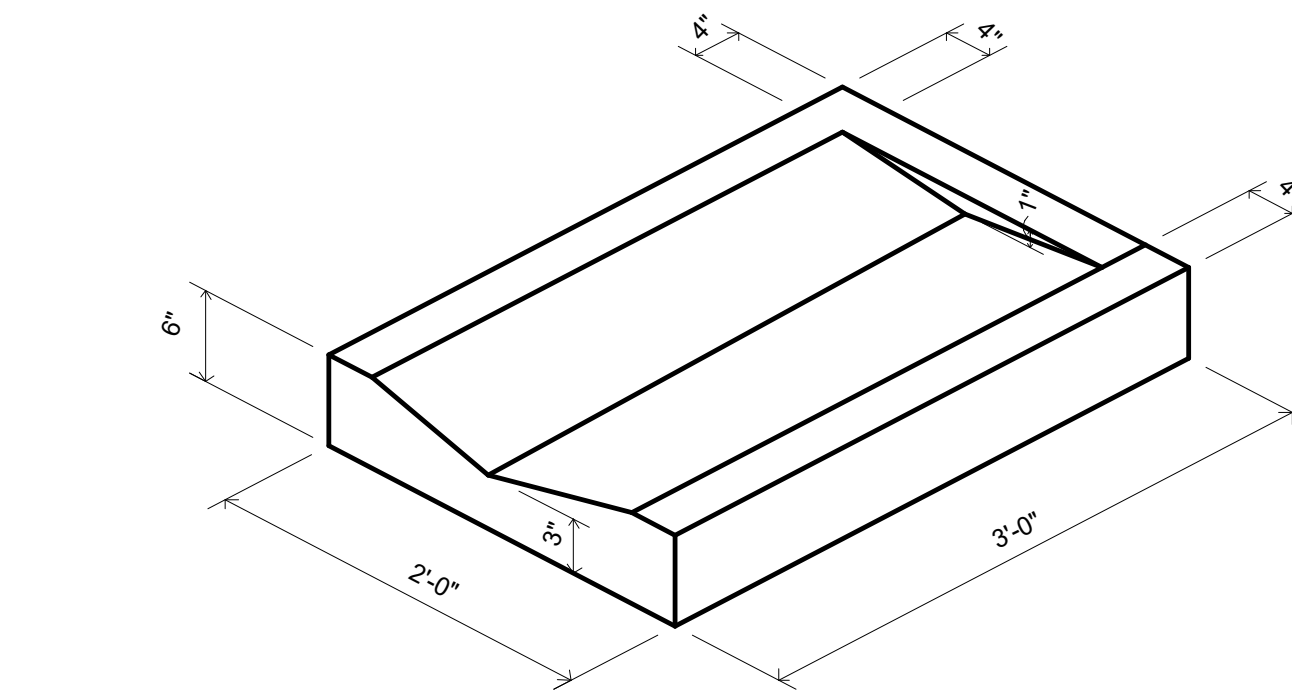
Scale: As indicated

A2.00b

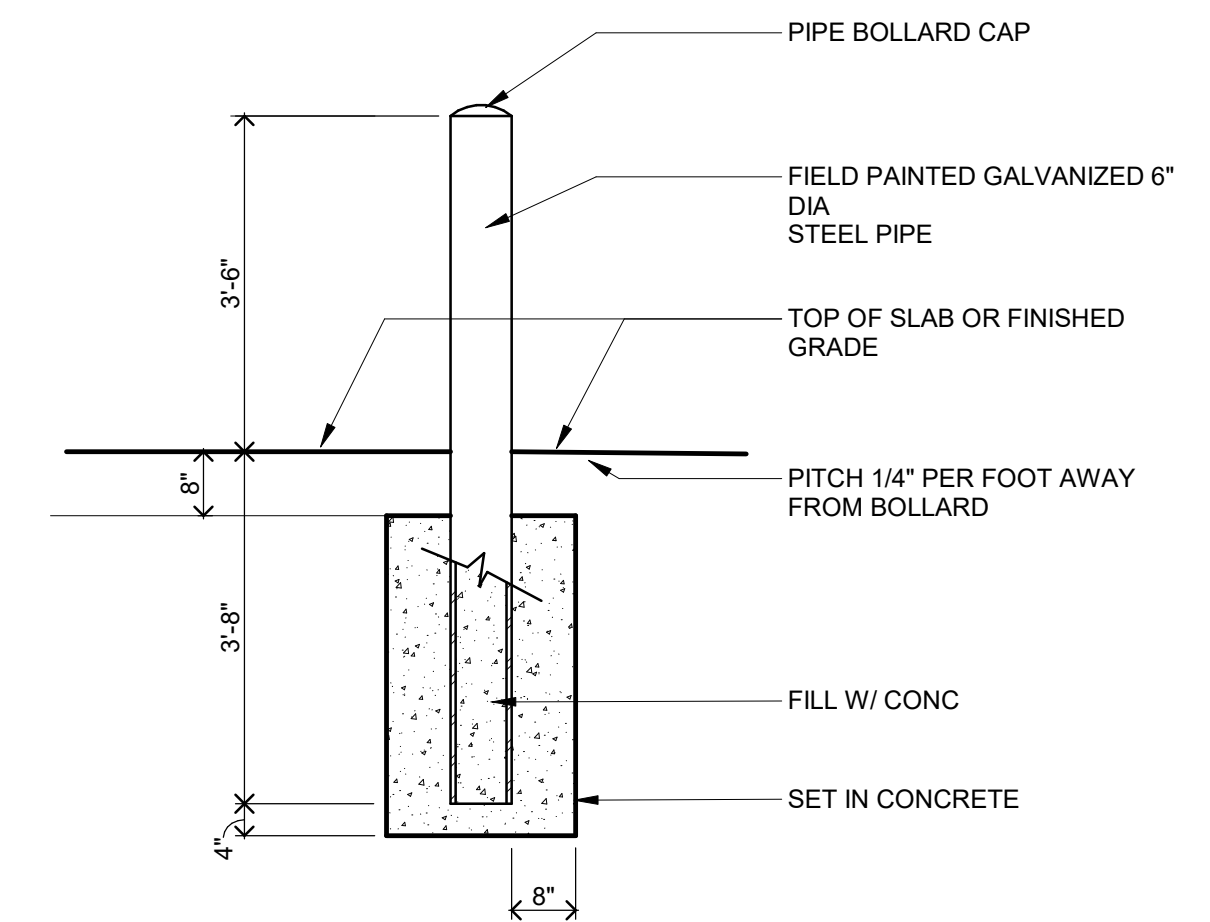
MN



B1 LOUVER TYPES
1/4" = 1'-0"



B2 CONCRETE SPLASHBLOCK
1" = 1'-0"



B4 BOLLARD DETAIL
1/2" = 1'-0"

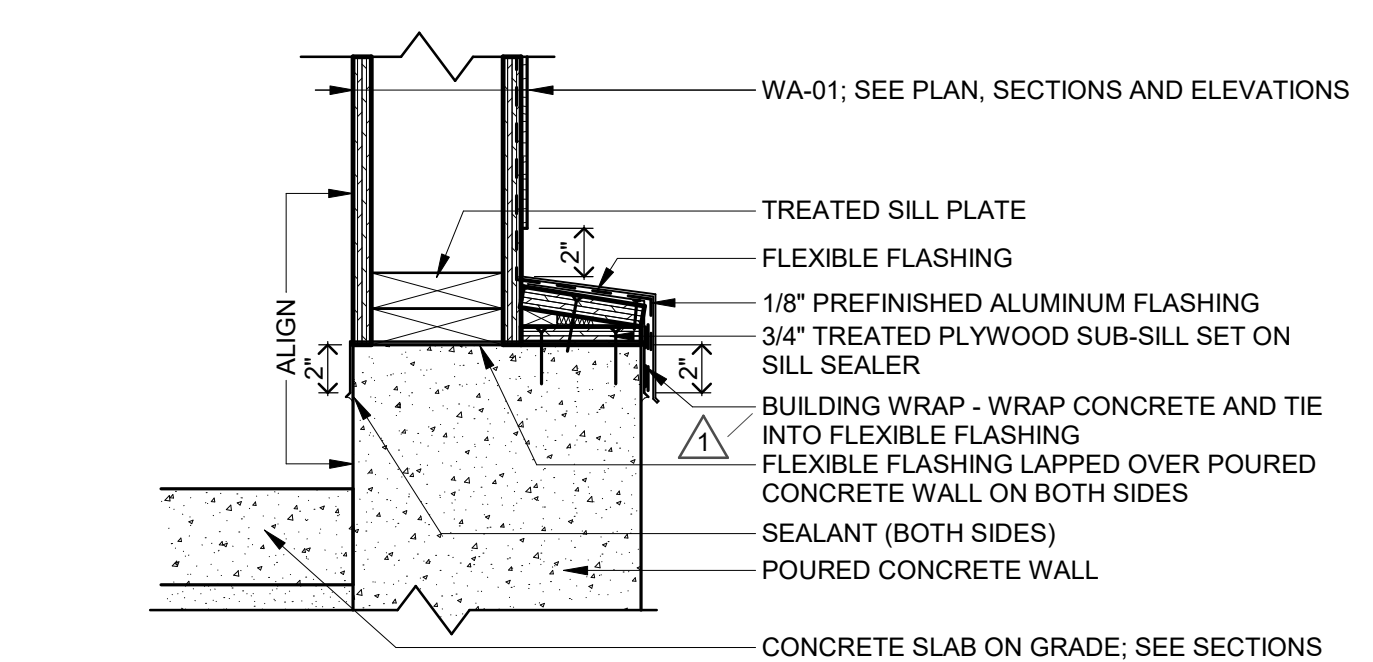
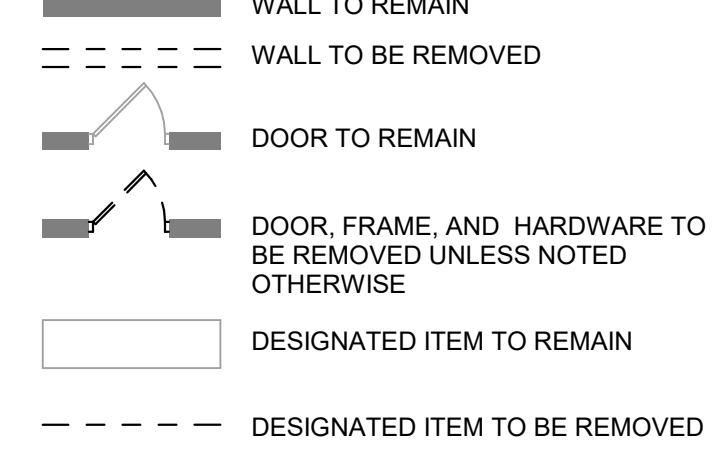
DEMOLITION GENERAL NOTES

- DEMOLITION NOTES AND PLANS ARE PROVIDED AS A GUIDE ONLY. CONTRACTOR TO VERIFY EXISTING CONDITIONS AND EXAMINE DRAWINGS AND DETAILS TO DETERMINE EXTENT AND LIMITS OF DEMOLITION REQUIRED TO ACCOMMODATE NEW CONSTRUCTION.
- CONTRACTOR IS RESPONSIBLE FOR COORDINATION OF ALL ASPECTS OF DEMOLITION. CONTRACTOR TO REVIEW ALL DRAWINGS FOR ADDITIONAL DETAILS AND CONSTRUCTION SEQUENCING NOTES. MECHANICAL AND ELECTRICAL DEMOLITIONS ARE SHOWN ON MECHANICAL AND ELECTRICAL DRAWINGS.
- REFER TO MECHANICAL AND ELECTRICAL FOR ADDITIONAL DEMOLITION NOTES.
- CONTRACTOR TO COORDINATE DEMOLITION WITH DETAILS AND STRUCTURAL DRAWINGS TO INSTALL NEW LINTELS OR STRUCTURAL COMPONENTS TO SUPPORT EXISTING STRUCTURE.
- PROVIDE AND COORDINATE ALL DEMOLITION AND RECONSTRUCTION WITH NEW WORK PLAN DIMENSIONS AND INSTALLATION OF NEW MATERIALS AND FINISHES, AS REQUIRED, WHETHER INDICATED ON DRAWINGS OR NOT.
- PROVIDE SMOOTH AND CLEAN SUBSTRATE TO ALL AREAS RECEIVING NEW FINISHES. COORDINATE WORK WITH PLANS AND THE ROOM FINISH SCHEDULE.
- ALL RELATED WOOD BLOCKING SUPPORT STRUCTURE, HARDWARE CONNECTION DEVICES, ADHESIVES, AND/OR MASTIC SHALL BE REMOVED FROM SURFACES AT ITEMS NOTED FOR REMOVAL. PROVIDE SURFACES ACCEPTABLE FOR PATCHING AND/OR NEW WORK.
- DEMOLITION NOTES WITHOUT ARROWS INDICATE THAT THE NOTE APPLIES TO THE ENTIRE ROOM.

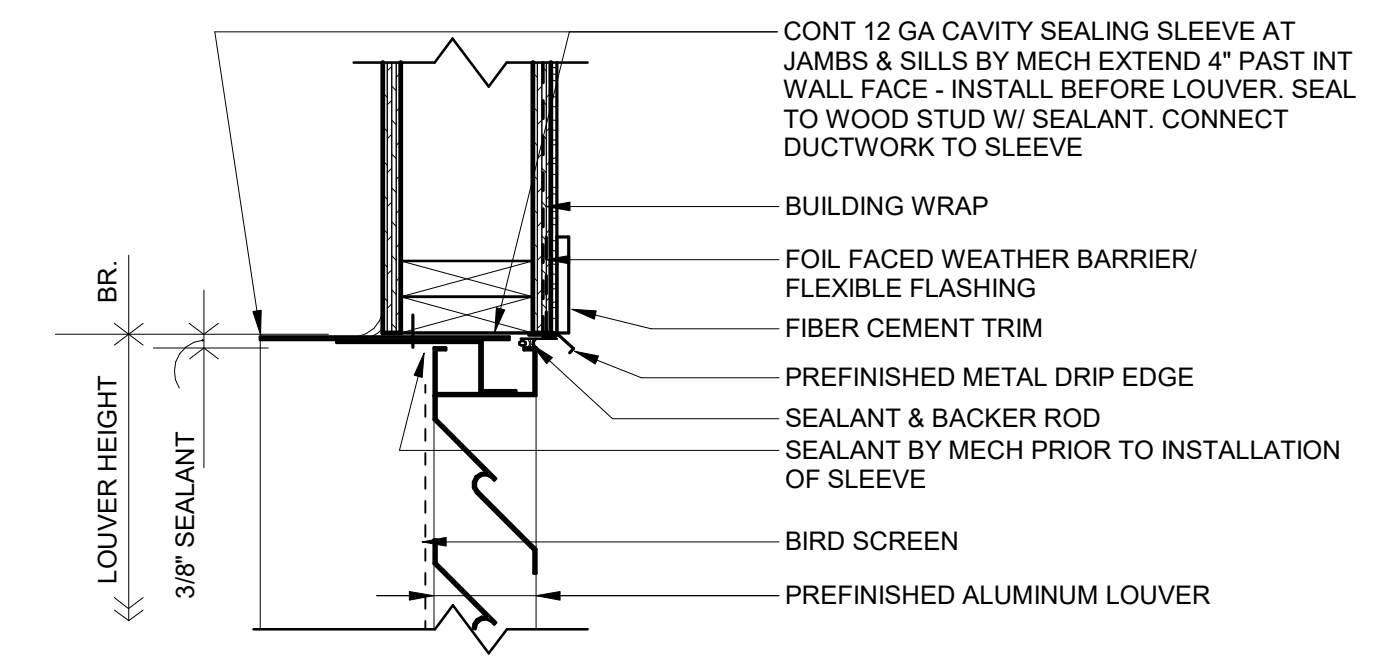
DEMOLITION PLAN KEY NOTES:

- PROTECT POWERED SIGN DURING CONSTRUCTION.
- REMOVE ROCKS TO EXTENTS SHOWN. SALVAGE FOR REINSTALLATION.
- EXISTING LIFT STATION TO REMAIN.

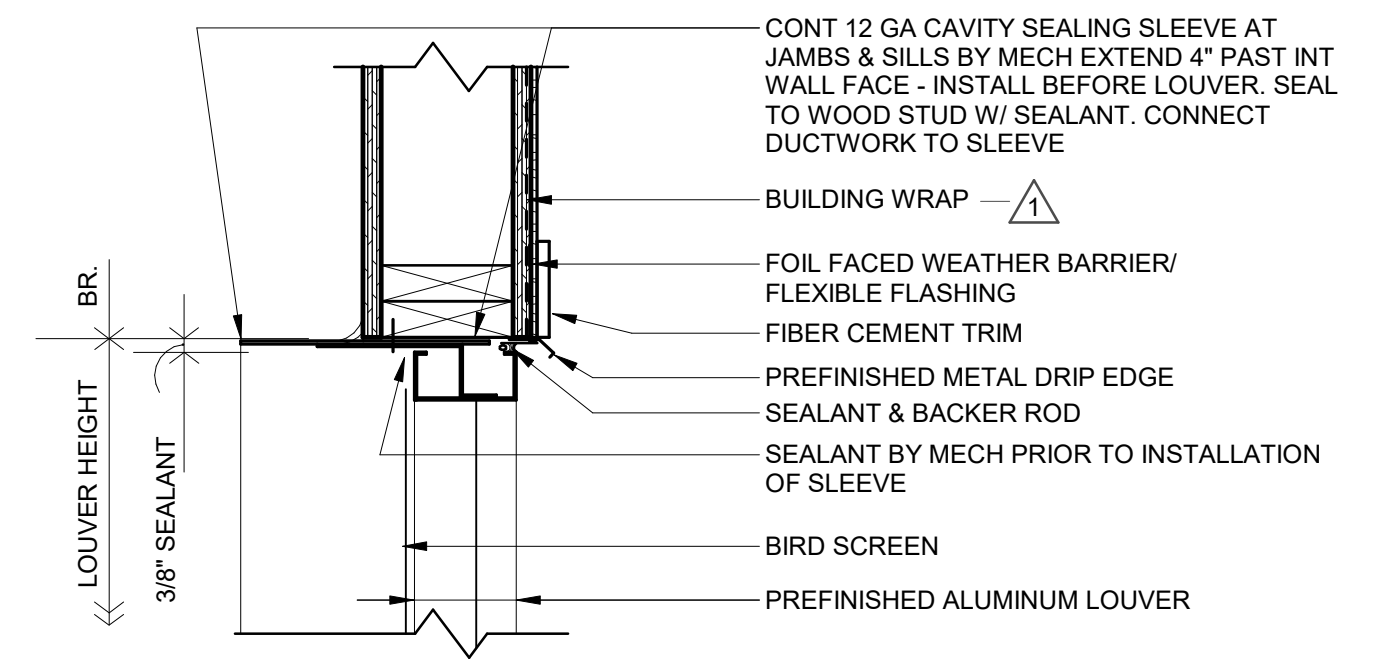
DEMOLITION LEGEND



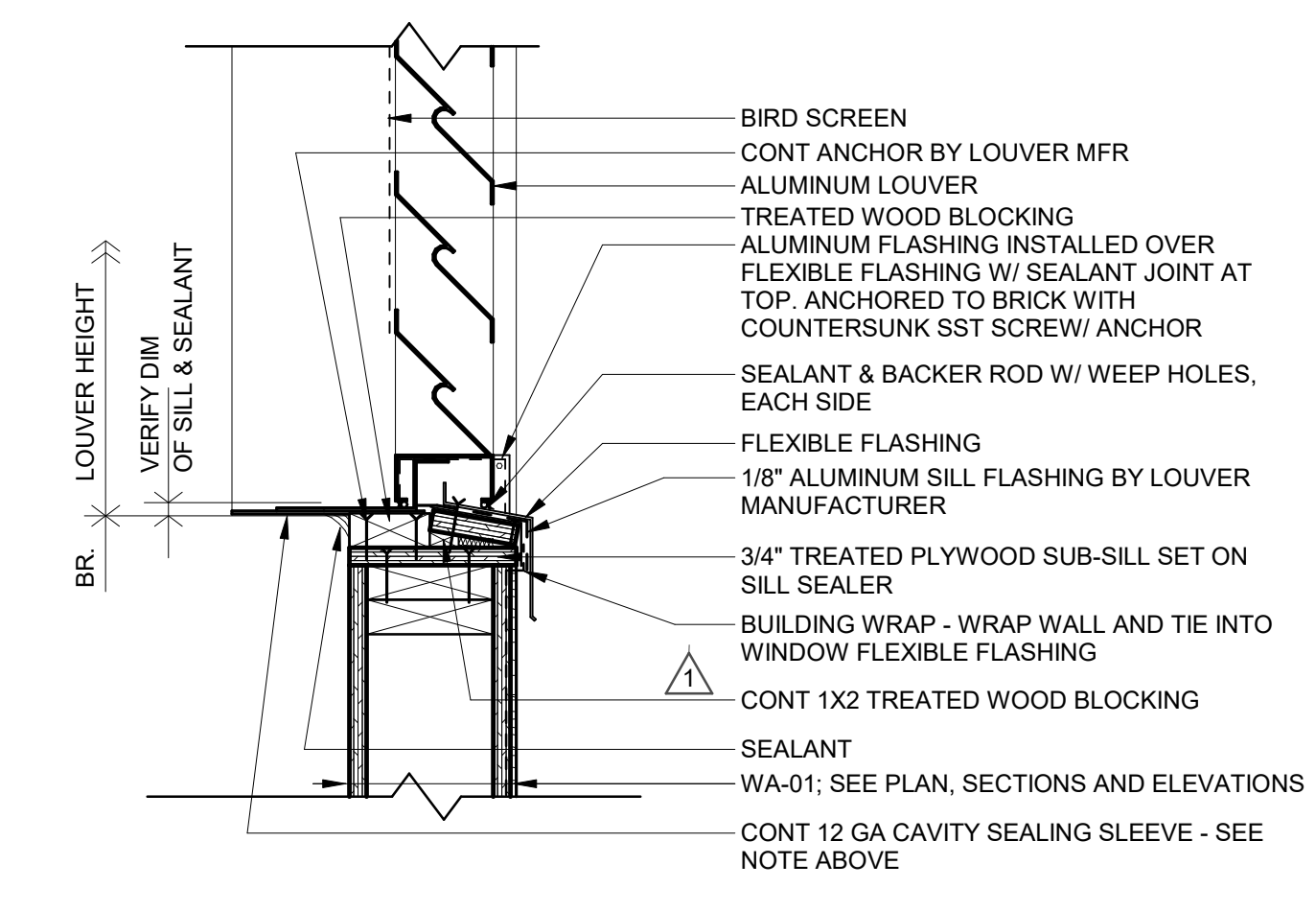
C1 FLASHING AT BASE OF WALL
1 1/2" = 1'-0"



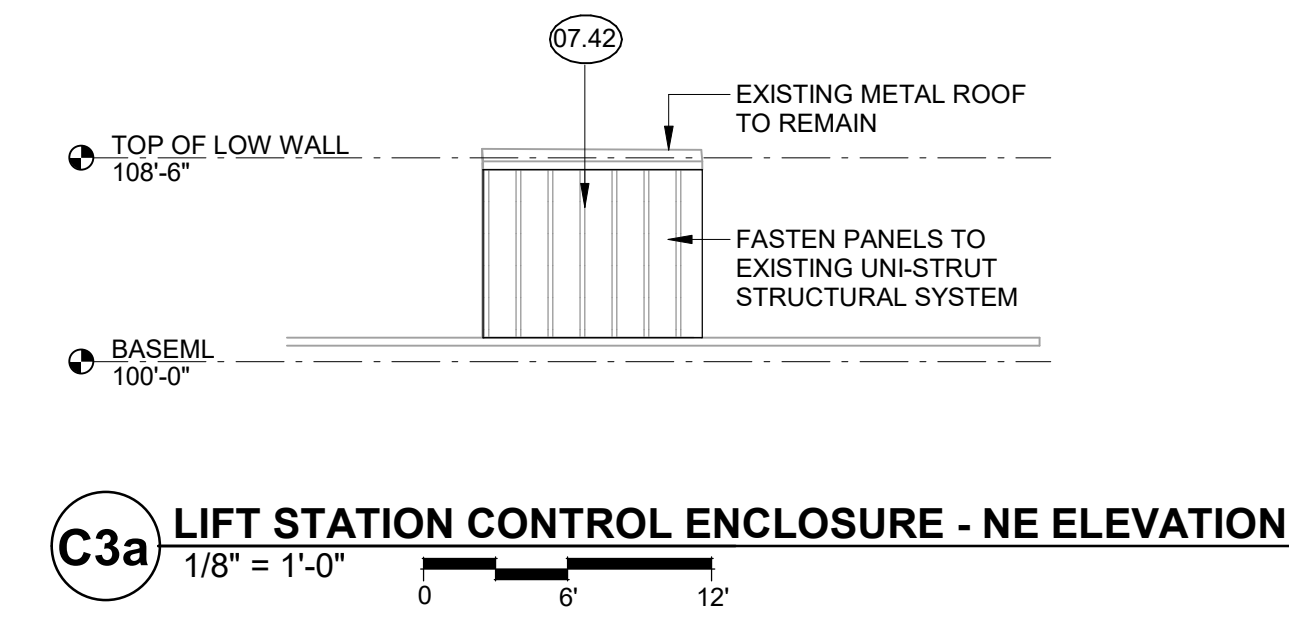
D1 LOUVER HEAD
1 1/2" = 1'-0"



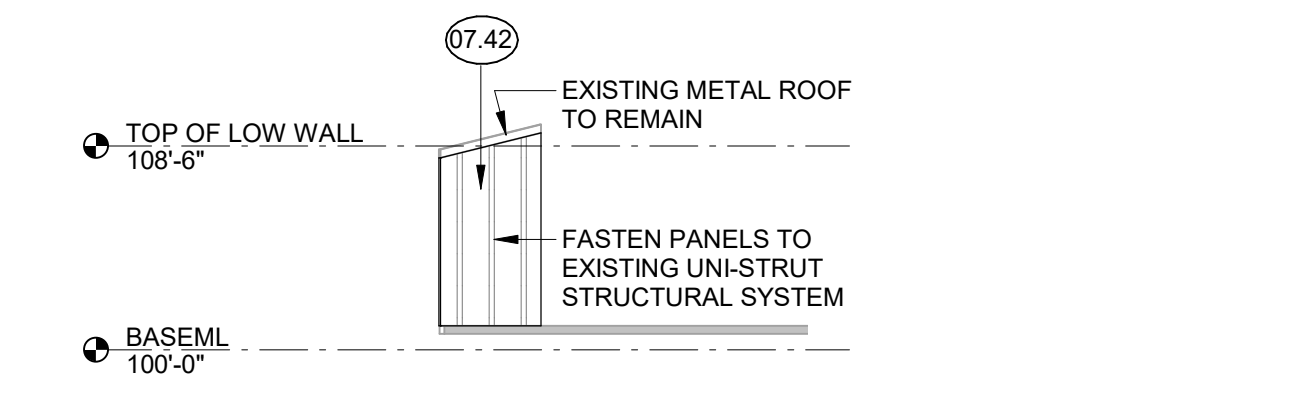
E1 LOUVER JAMB
1 1/2" = 1'-0"



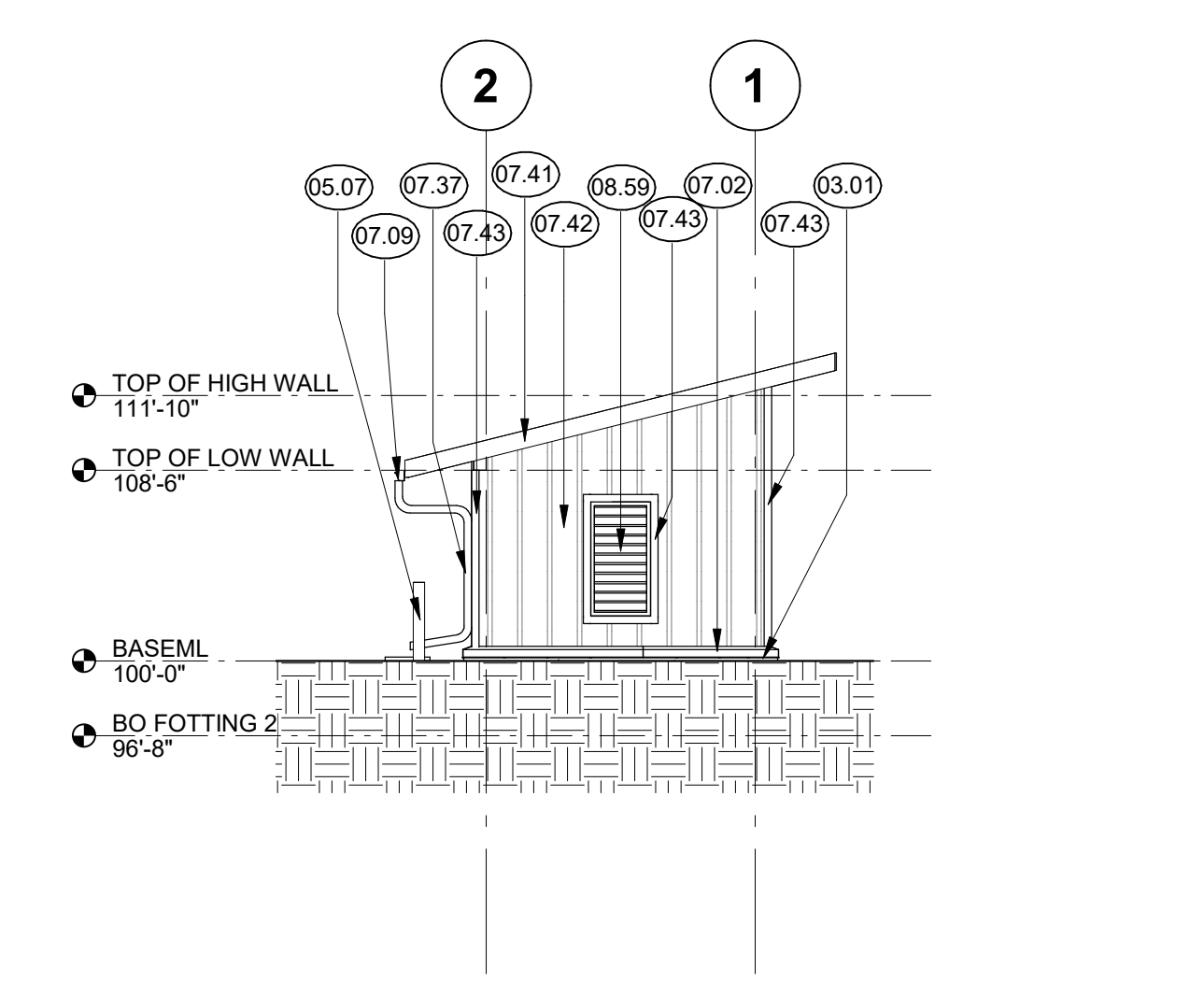
F1 LOUVER SILL
1 1/2" = 1'-0"



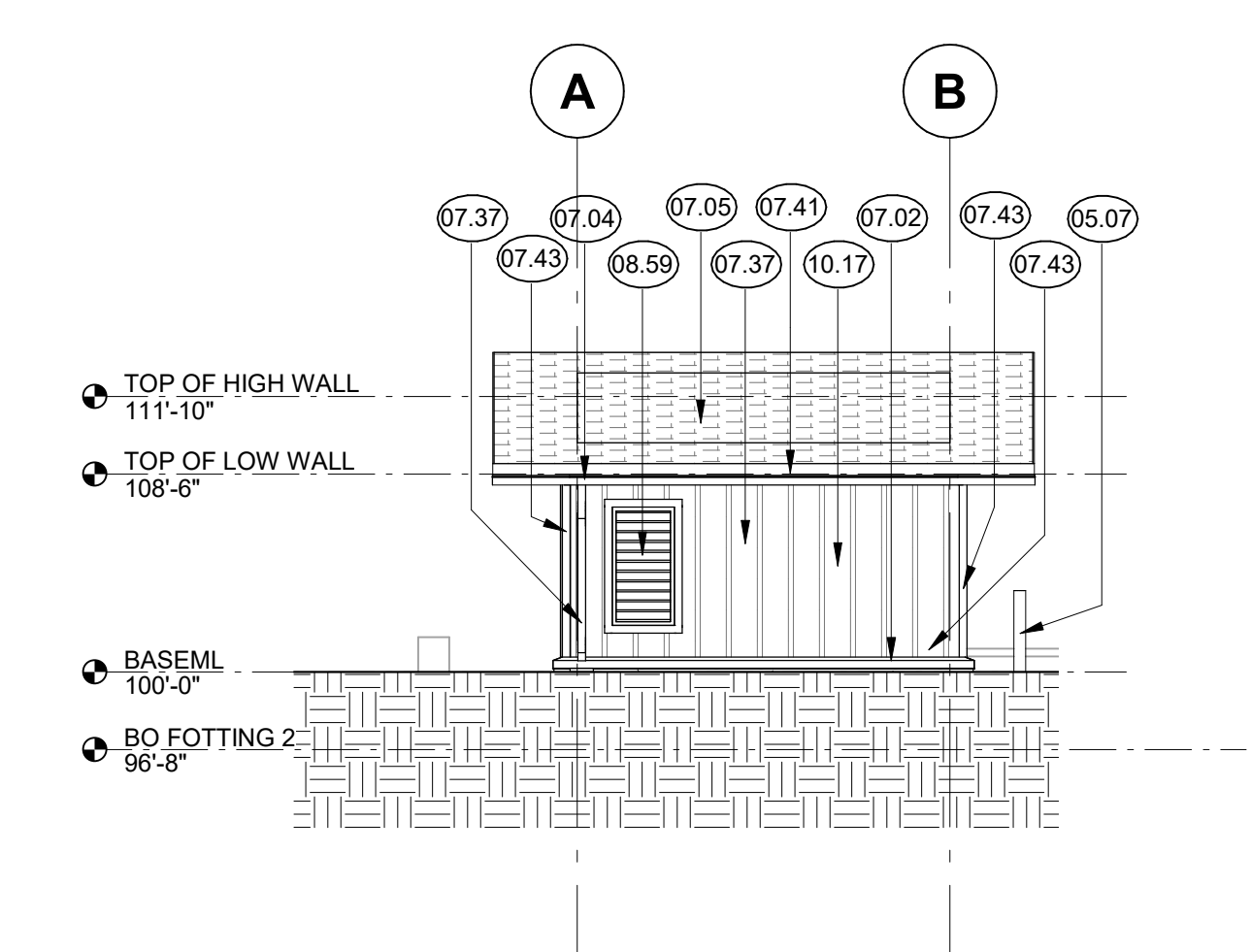
C3a LIFT STATION CONTROL ENCLOSURE - NE ELEVATION
1/8" = 1'-0"



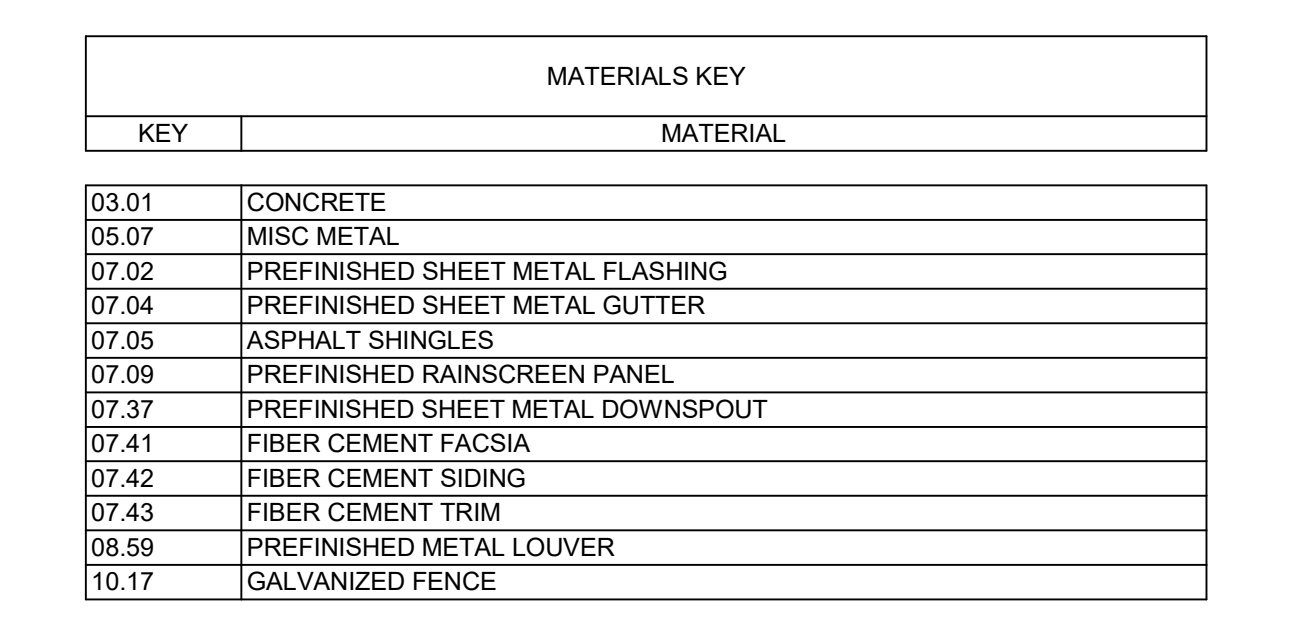
C3 LIFT STATION CONTROL ENCLOSURE - NW ELEVATION
1/8" = 1'-0"



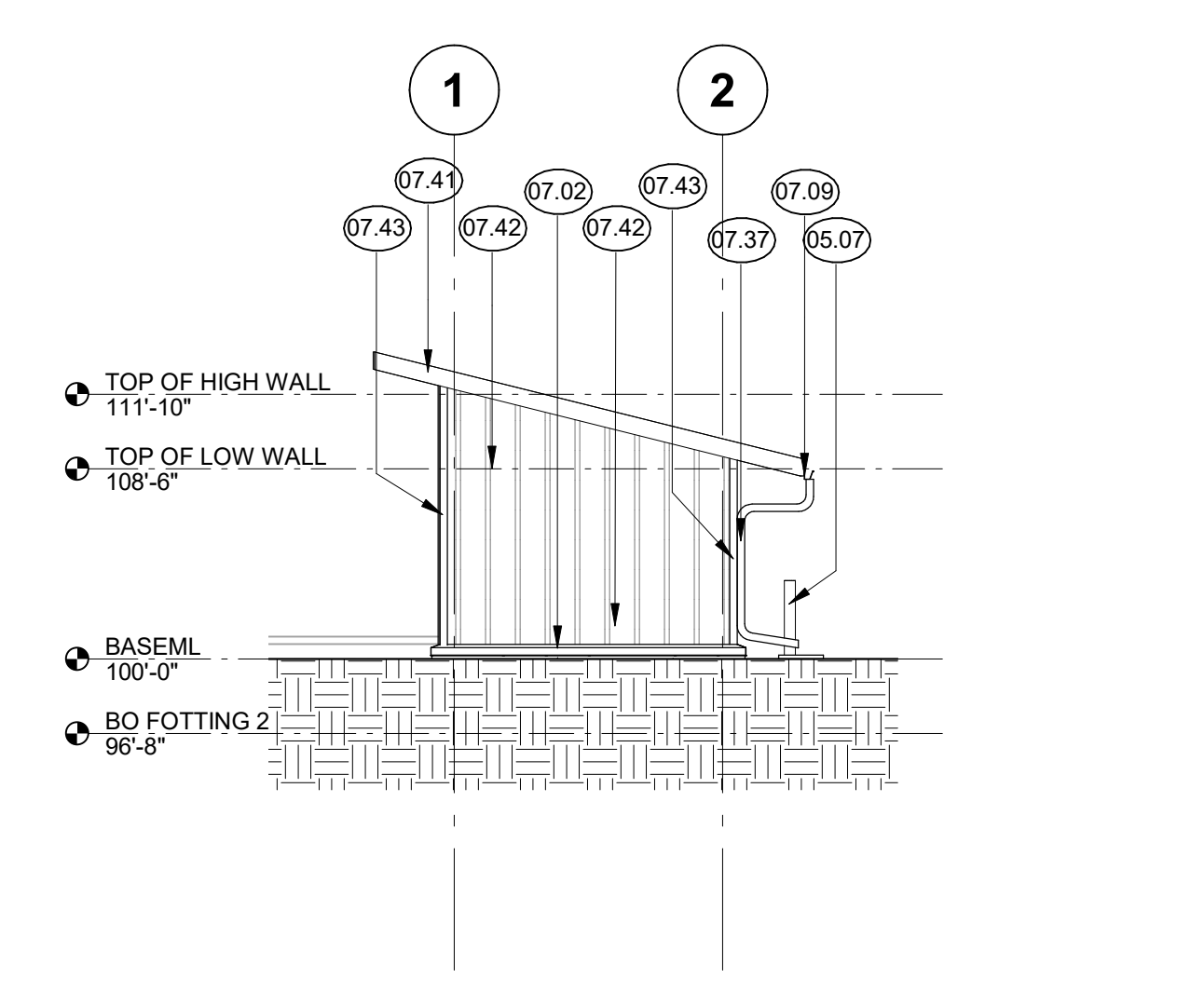
E3 GENERATOR - SOUTHEAST ELEVATION
1/8" = 1'-0"



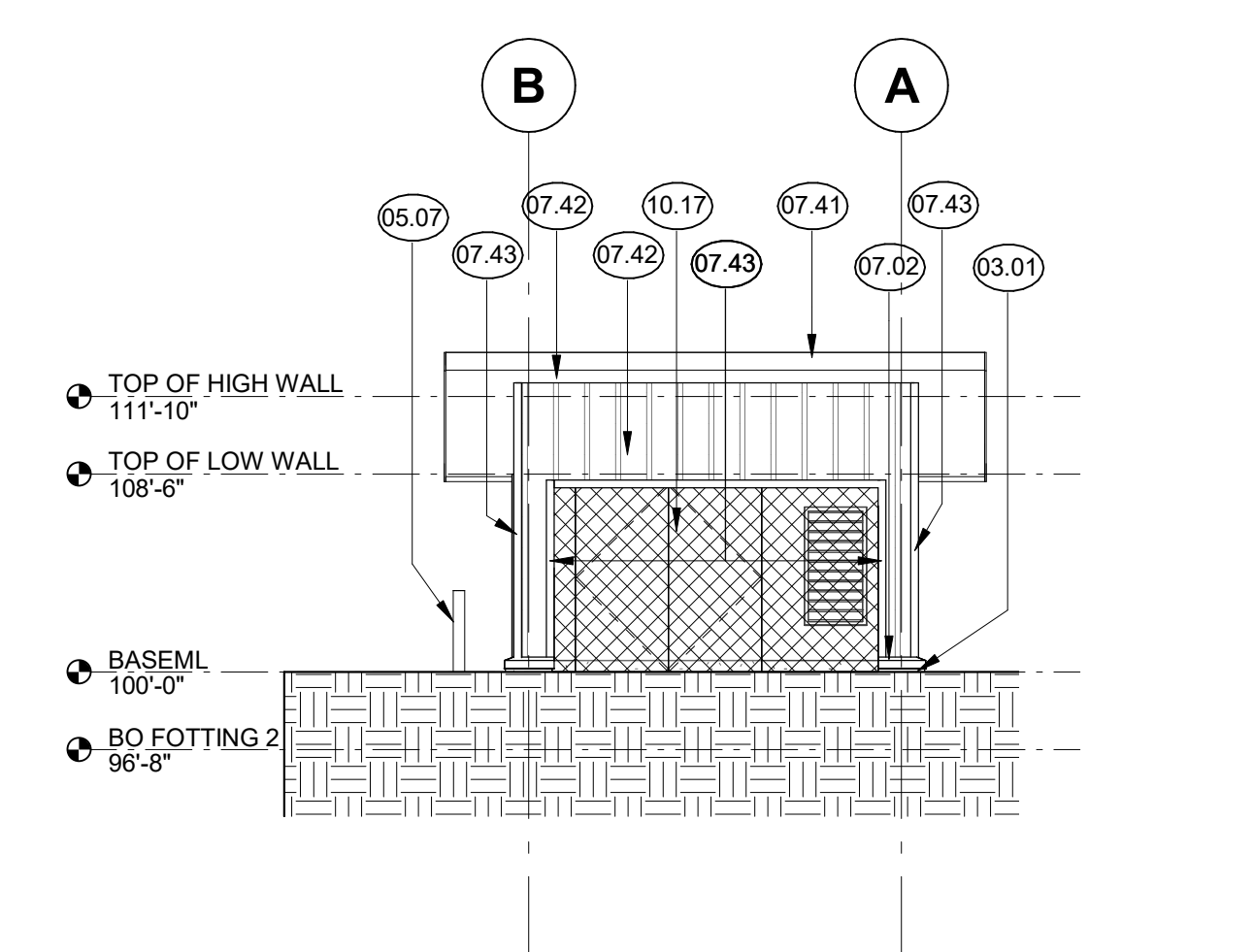
F3 GENERATOR - SOUTHWEST ELEVATION
1/8" = 1'-0"



C5a LIFT STATION CONTROL ENCLOSURE - SE ELEVATION
1/8" = 1'-0"

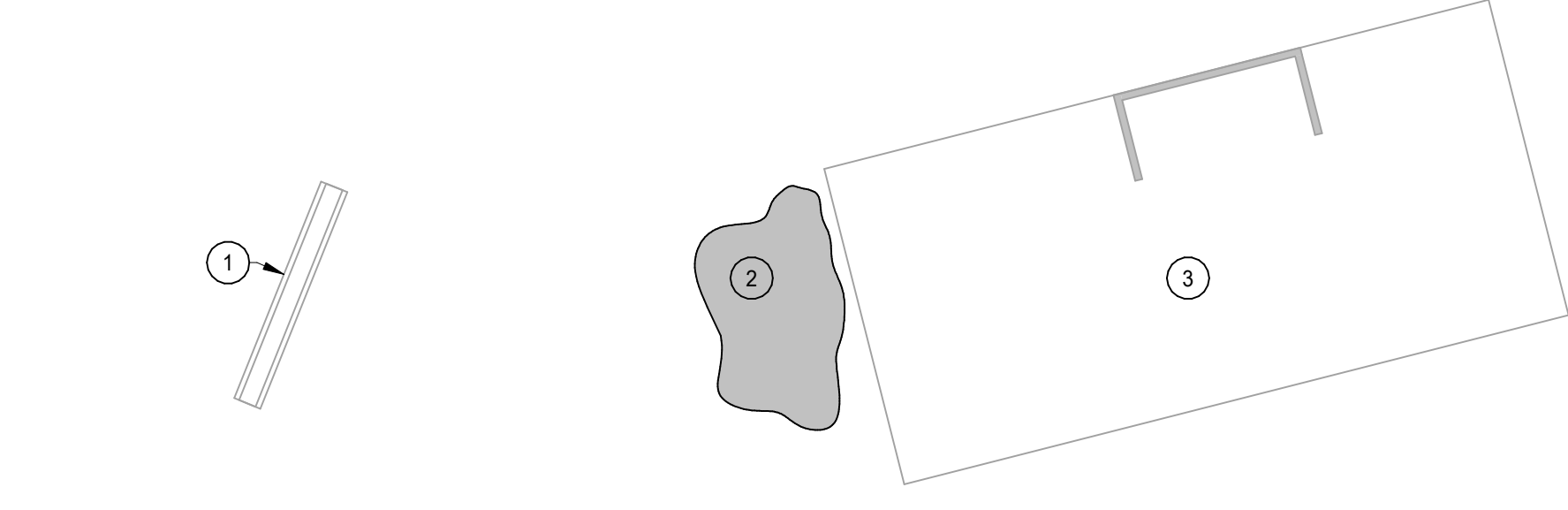


E5 GENERATOR - NORTHWEST ELEVATION
1/8" = 1'-0"



F5 GENERATOR - NORTHEAST ELEVATION
1/8" = 1'-0"

MATERIALS KEY	
KEY	MATERIAL
03.01	CONCRETE
05.07	MISC METAL
07.02	PREFINISHED SHEET METAL FLASHING
07.04	PREFINISHED SHEET METAL GUTTER
07.05	ASPHALT SHINGLES
07.09	PREFINISHED RAINSCREEN PANEL
07.37	PREFINISHED SHEET METAL DOWNSPOUT
07.41	FIBER CEMENT FACIA
07.42	FIBER CEMENT SIDING
07.43	FIBER CEMENT TRIM
08.59	PREFINISHED METAL LOUVER
10.17	GALVANIZED FENCE



C6 GENERATOR DEMOLITION PLAN
1/8" = 1'-0"

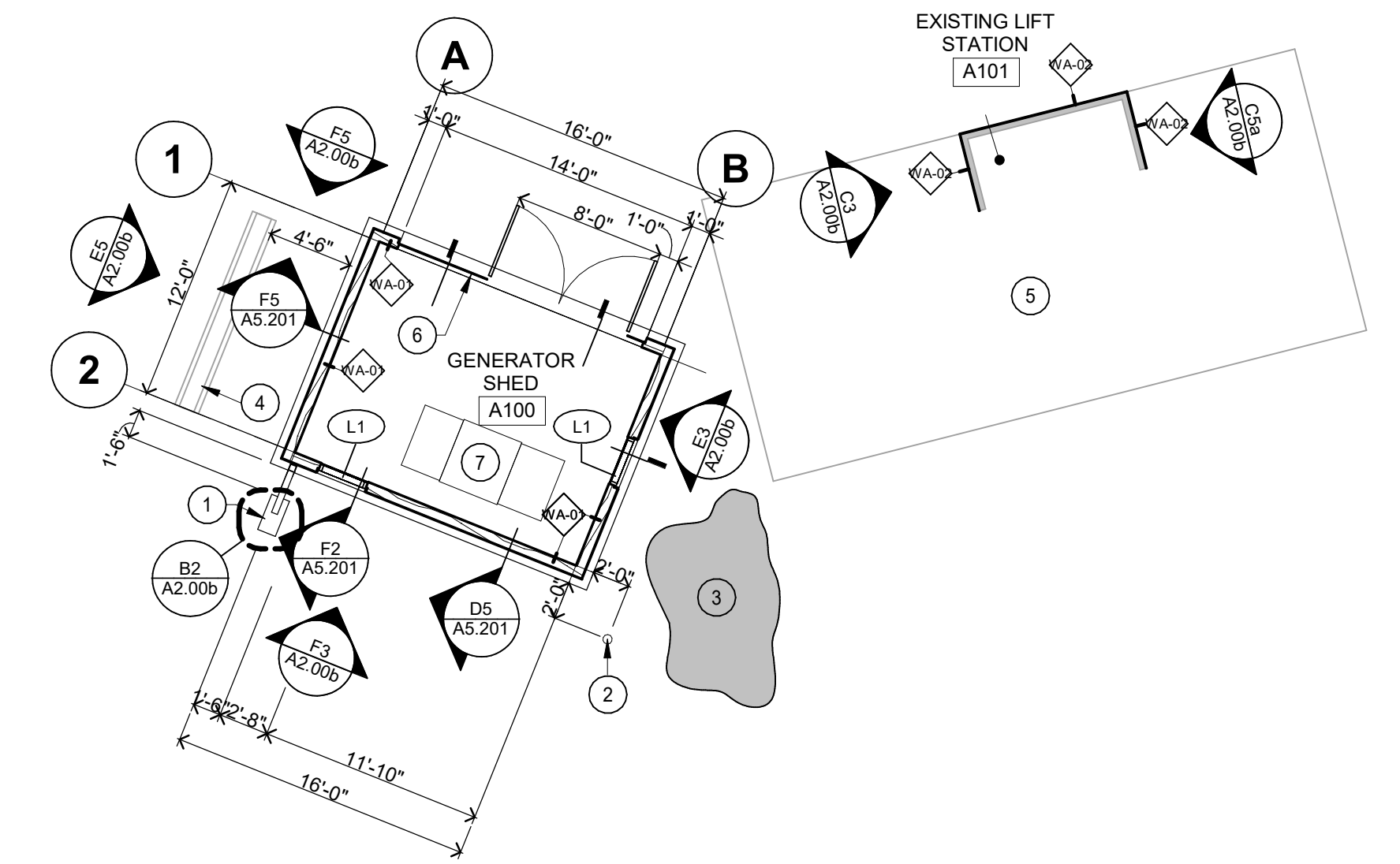
PLAN GENERAL NOTES

- ALL PLAN DIMENSIONS ARE NOMINAL TO FACE OF WALL. WALL THICKNESSES ARE SHOWN NOMINAL. SEE WALL TYPES FOR ACTUAL THICKNESS.
- COORDINATE SIZE AND LOCATION OF ALL DUCT AND SHAFT OPENINGS IN WALLS AND FLOORS W/ MECH. AND ELEC. PROVIDE ALL REQUIRED LINTELS FOR OPENINGS. SEE LINTEL SCHEDULE.
- VERIFY LOCATION, SIZE AND QUANTITY OF ALL MECHANICAL AND ELECTRICAL EQUIPMENT PADS.

FLOOR PLAN KEY NOTES:

- SPLASH BLOCK - SEE DETAIL B2/A2.00b.
- BOLLARD - SEE DETAIL B4/A2.00b.
- RELOCATED ROCKS.
- EXISTING MONUMENT SIGN TO REMAIN.
- EXISTING LIFT STATION TO REMAIN.
- REMOVABLE GALVANIZED CHAIN LINK FENCE WITH 42" GATE.
- GENERATOR; COORDINATE WITH ELECTRICAL.

ROOM FINISH SCHEDULE													
ROOM NO.	ROOM NAME	FLOOR	BASE	N WALL - TYP		E WALL		S WALL		W WALL		REMARKS	
				MATL	FIN	MATL	FIN	MATL	FIN	MATL	FIN		
A100	GENERATOR SHED		CONC	CONC	PLYWOOD	HERITAGE CLAY	PLYWOOD	HERITAGE CLAY	PLYWOOD	HERITAGE CLAY	PLYWOOD	HERITAGE CLAY	



F6 GENERATOR FLOOR PLAN
1/8" = 1'-0"

LIFT STATION GENERATOR ENCLOSURE

Wood St.,
Wrangell, AK 99929

City of Wrangell
Wood St, Wrangell, AK 99929



WOLD ARCHITECTS AND ENGINEERS
332 Minnesota Street, Suite W2000
Saint Paul, MN 55101
woldac.com | 651 227 7773

PSM CONSULTING ENGINEERS, INC.
2200 SIXTH AVENUE, SUITE 601
SEATTLE, WA 98121
P: 206.622.4580
www.psm-engineers.com



R&M ENGINEERING-KETCHIKAN, INC.
ENGINEERS GEOLOGISTS SURVEYORS



I hereby certify that this plan, specification or report was prepared by me or under my direct supervision and that I am a duly Licensed ARCHITECT under the laws of the State of MINNESOTA.

License Number: 46143 Date: 06/30/2022

Description	Revisions	Date	Num
Addendum 1		03/10/2022	1
Addendum 3		03/31/2022	2

Comm: 216054
Date: 01/25/2022
Drawn: MS
Check: SM | JR

MAIN LEVEL DEMOLITION PLAN, FLOOR PLAN & ELEVATIONS

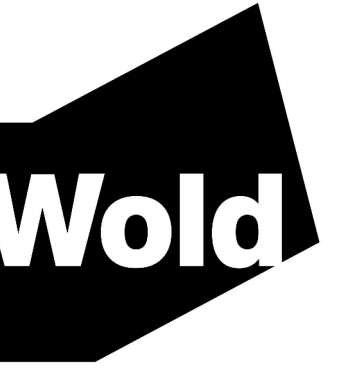
Scale: As indicated

A2.00b

**LIFT STATION
GENERATOR
ENCLOSURE**

Wood St.,
Wrangell, AK 99929

City of Wrangell
Wood St, Wrangell, AK 99929



**WOLD ARCHITECTS
AND ENGINEERS**
332 Minnesota Street, Suite W2000
Saint Paul, MN 55101

woldac.com | 651 227 7773

PSM CONSULTING ENGINEERS, INC.
2200 SIXTH AVENUE, SUITE 601
SEATTLE, WA 98121
P: 206.622.4580
www.psm-engineers.com

R&M
R&M ENGINEERING-KETCHIKAN, INC.
ENGINEERS GEOLOGISTS SURVEYORS



I hereby certify that this plan, specification or report was prepared by me or under my direct supervision and that I am a duly Licensed ARCHITECT under the laws of the State of MINNESOTA.
Josh Ripplinger
License Number: 46143 Date: 06/30/2022

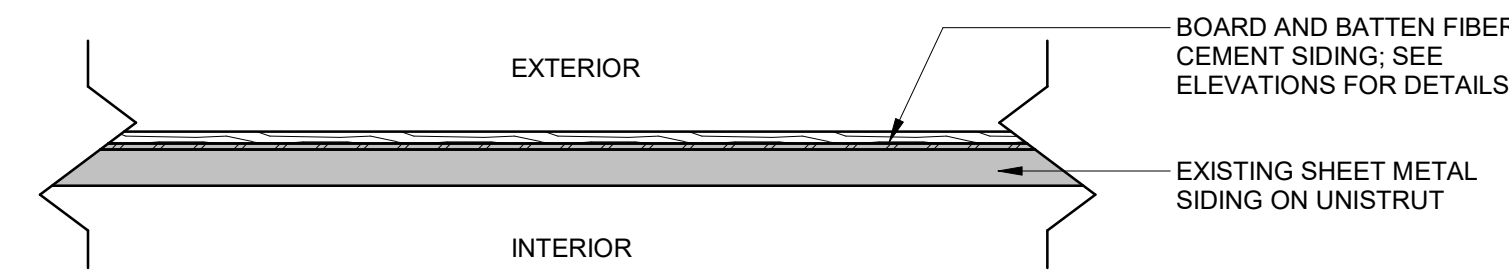
Description	Revisions	
	Date	Num
Addendum 1	03/10/2022	1
Addendum 3	03/31/2022	2

Comm: 216054
Date: 01/25/2022
Drawn: MS
Check: SM | JR

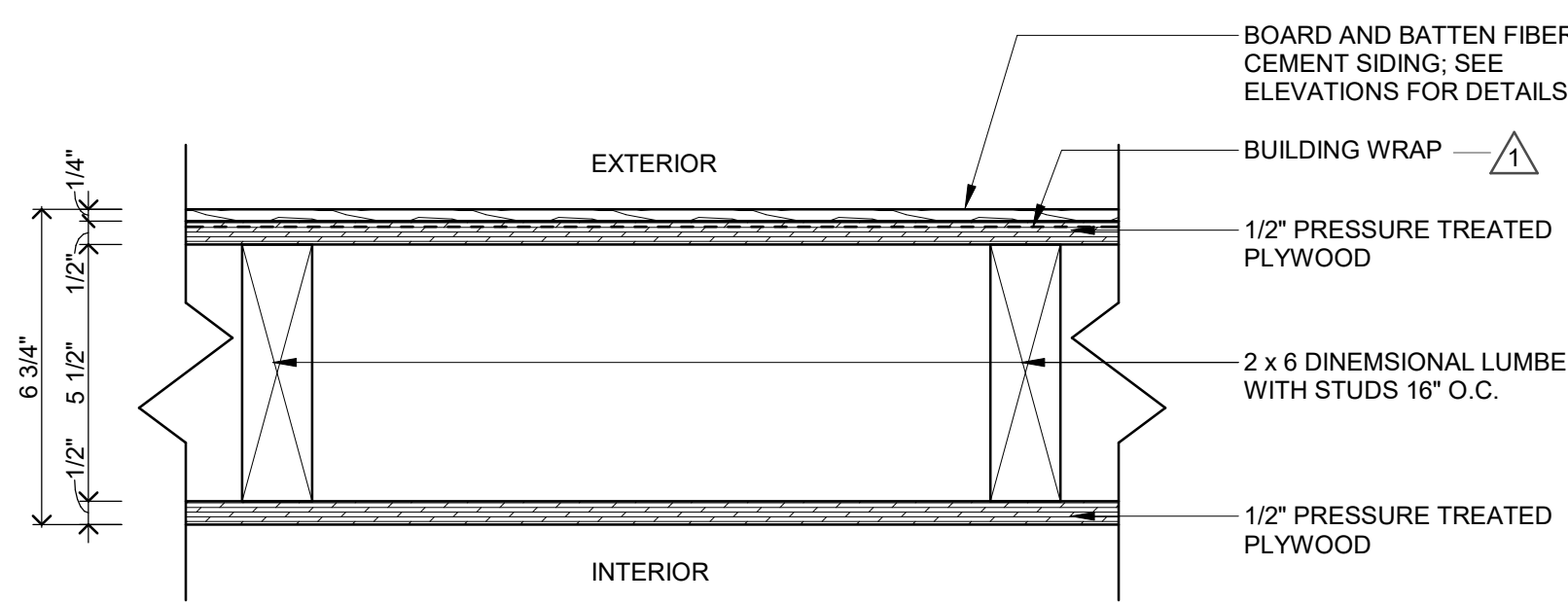
**WALL SECTIONS,
TYPES AND
DETAILS**

Scale: As Indicated

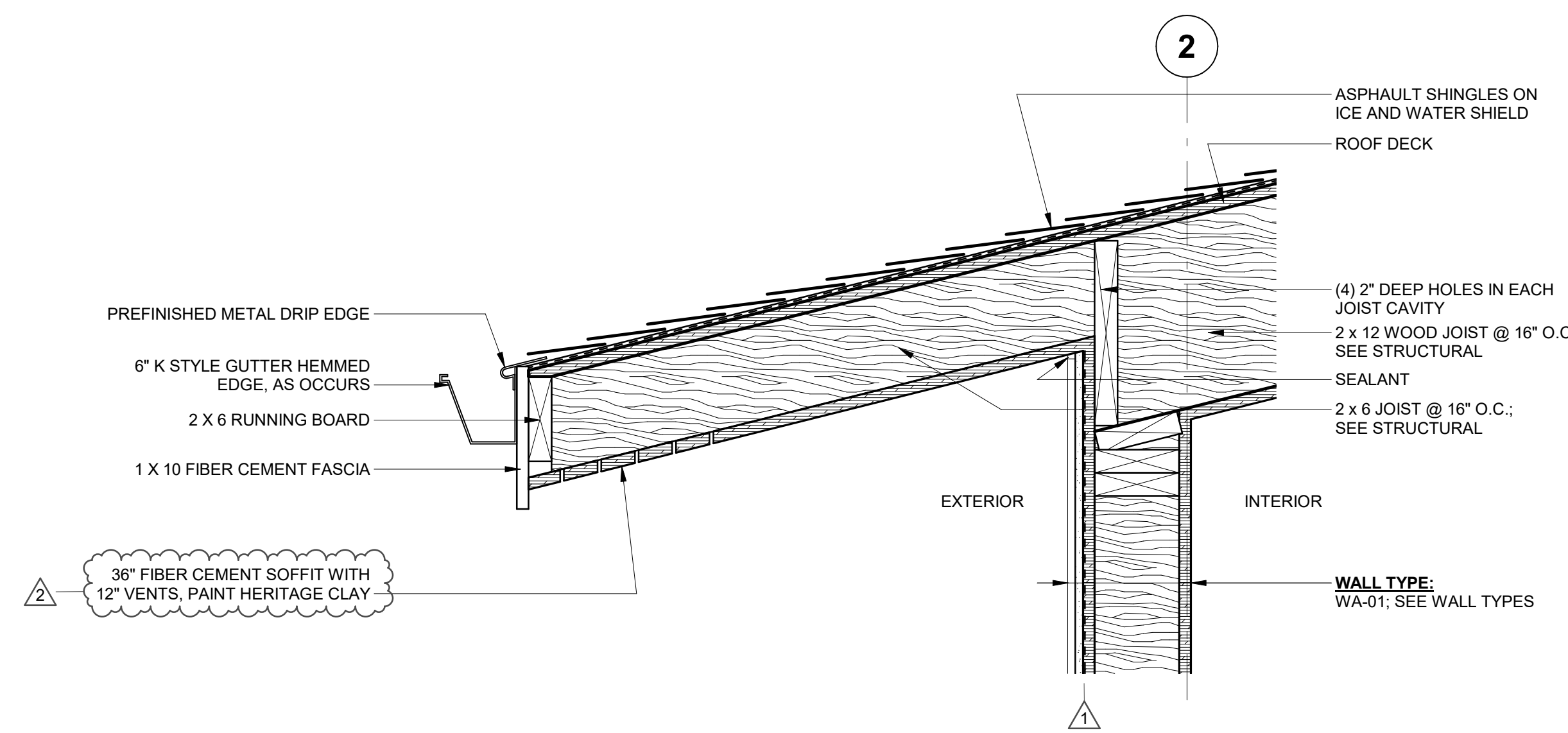
A5.201



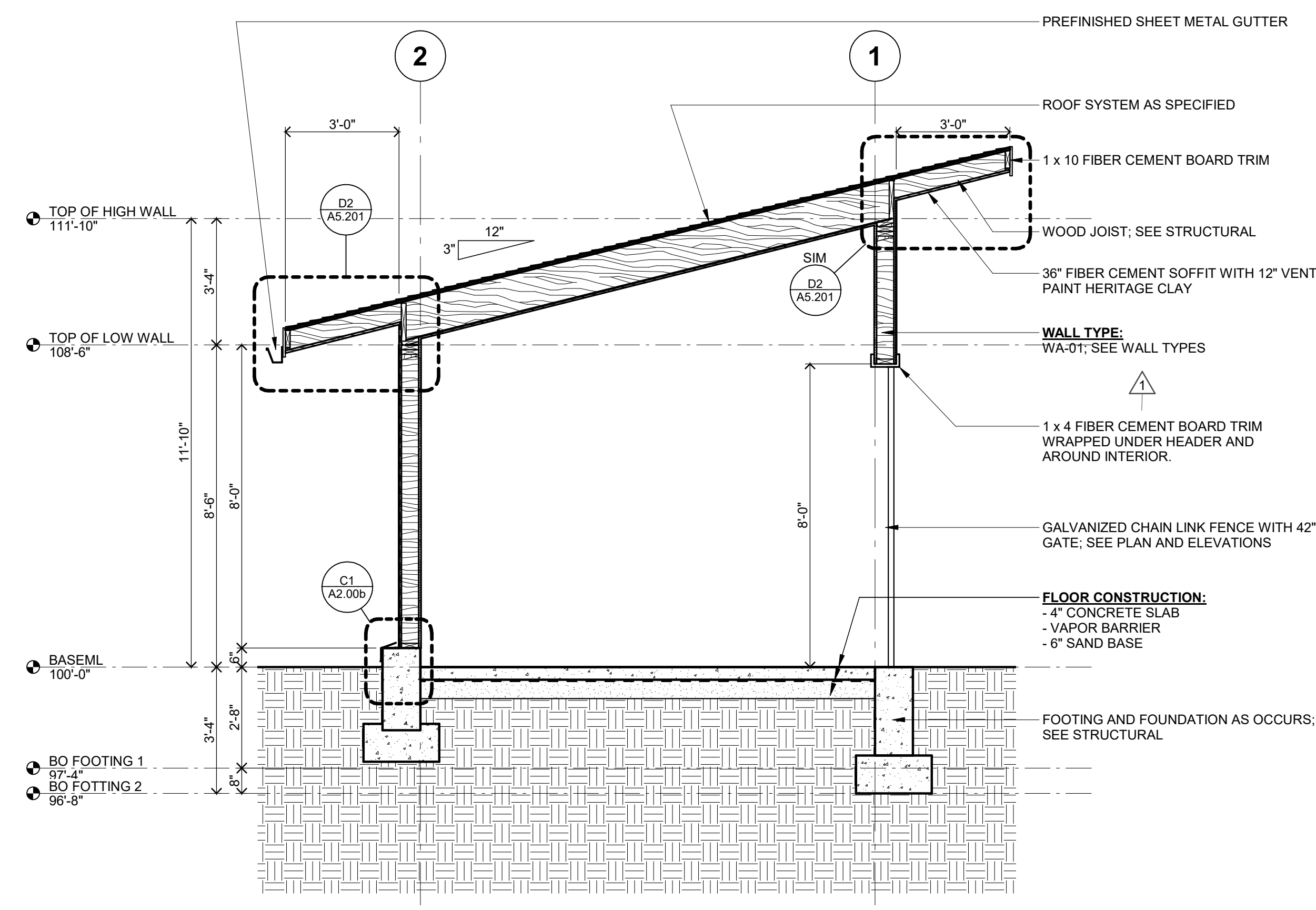
A2 WA-02 - PLAN DETAIL (FIBER CEMENT SIDING ON EXISTING METAL STRUCTURE)
3" = 1'-0"



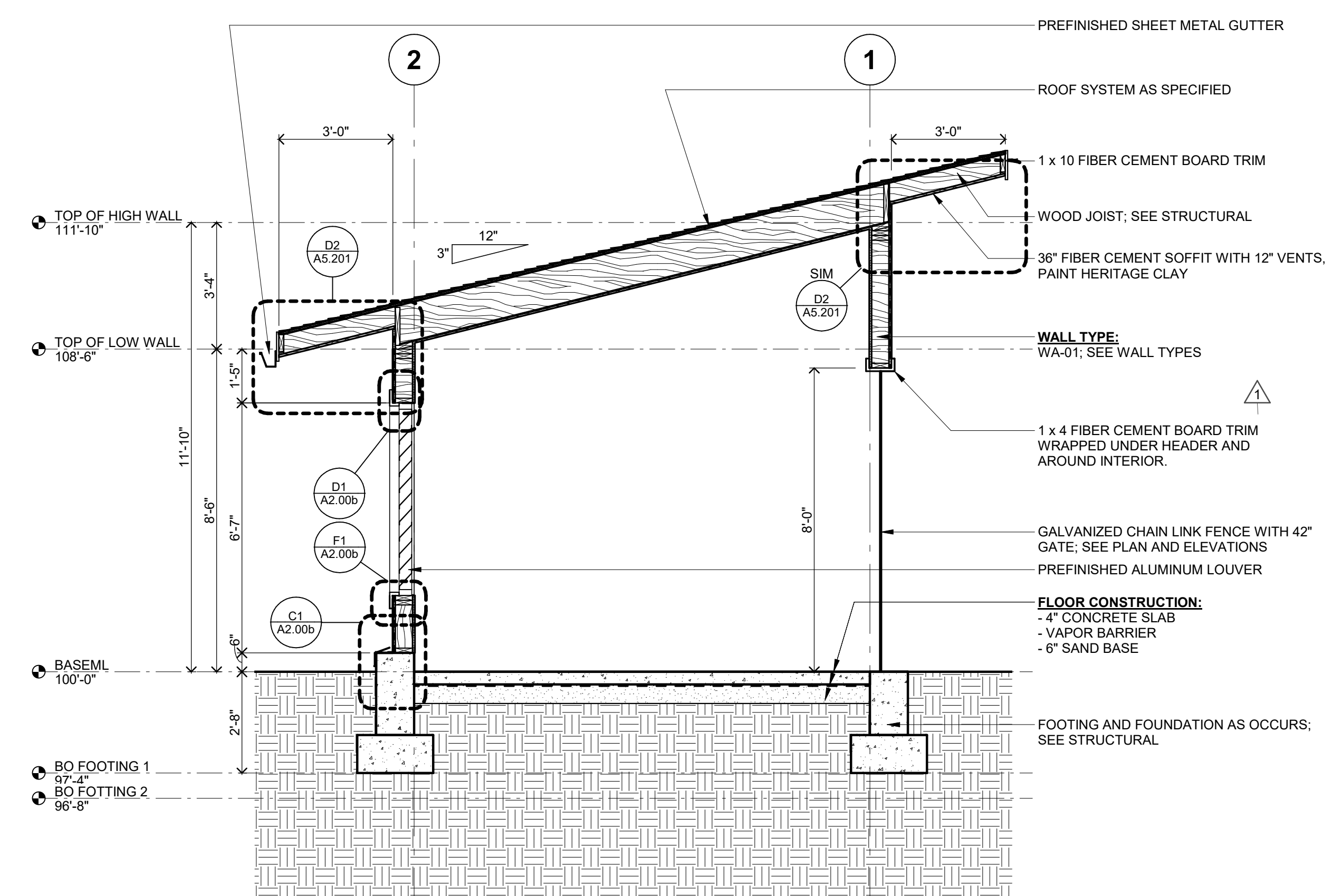
B2 WA-01 - PLAN DETAIL (FIBER CEMENT SIDING ON WOOD STUD)
3" = 1'-0"



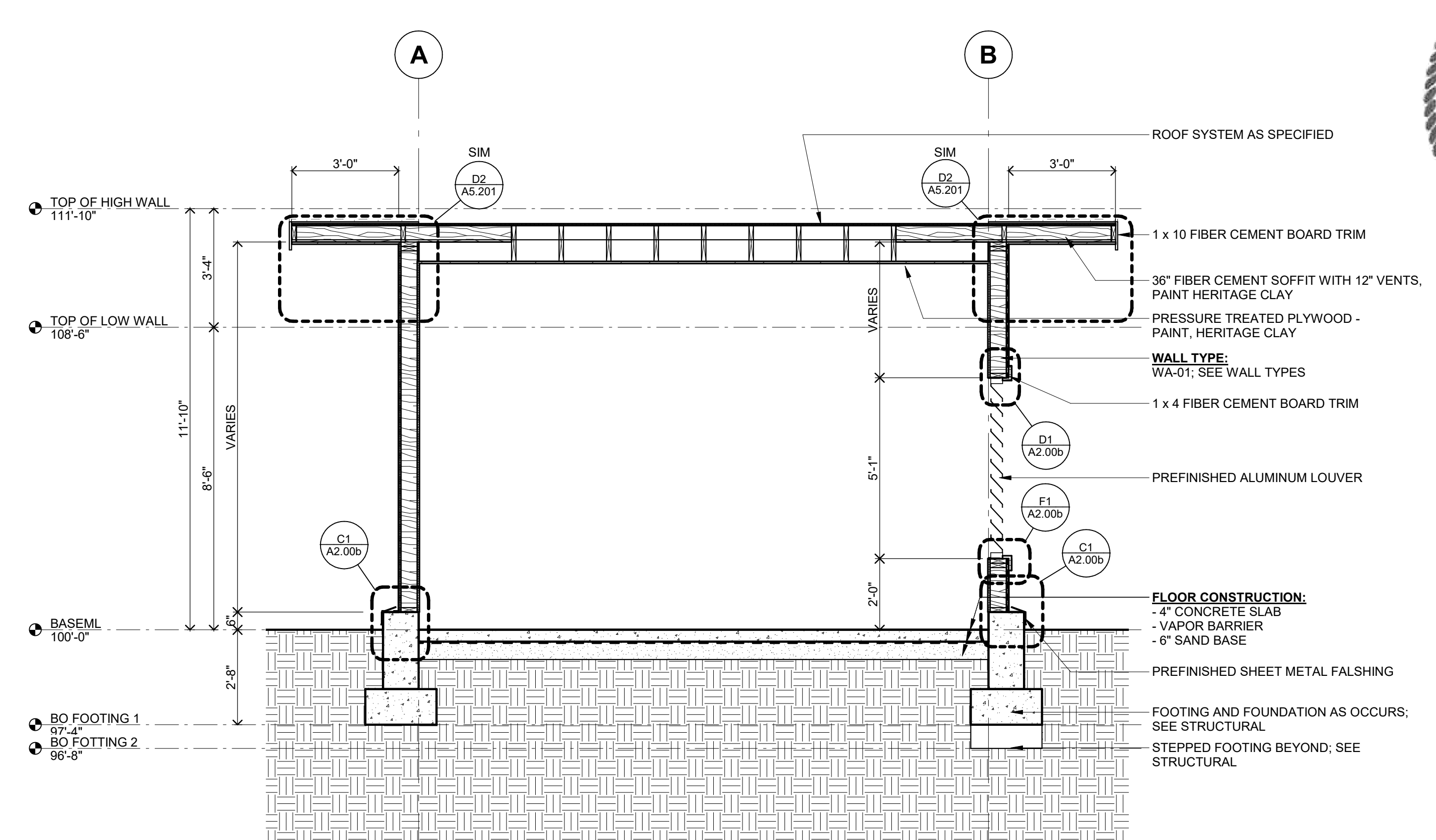
D2 ROOF SOFFIT DETAIL
1 1/2" = 1'-0"



D5 SECTION AT STEPPED FOOTING
3/8" = 1'-0"



F2 SECTION AT LOUVER AND CHAIN LINK FENCE
3/8" = 1'-0"



F5 SECTION AT LOUVER
3/8" = 1'-0"

MN

A