



Alaska Department of Transportation & Public Facilities



Published by Sam Dapcevich · November 20 at 12:25 PM ·

#princeofwalesisland. Please be sure to use caution and avoid the area near the Klawock Airport. The road is open, but some places have 8" of standing water. Residents are advised to remain off the roadway at this time.



TB EMS

November 20 at 10:24 AM ·

NOTICE - Landslide between Black Bear Creek and Control Lake (near airport). The road is washed out - No one is allowed to pass right now. 11/20/23 10:25am

No insights to show

Boost a post

14

1 comment 5 shares

Like

Comment

Share

Most relevant



Write a comment..



Justin D Capps
Landslide north of ketchikan too .

1w Like Reply Hide



Alaska Department of Transportation & Public Facilities

Published by Sam Dapcevic · November 20 at 9:54 PM ·



Nov. 21, 6:52 AM - Sharing update from the City of Wrangell:

<https://www.facebook.com/wrangellak/posts/pfbid0hGARivKc3sL4DHBLjzge9XejR3pQorqHLb4Hn938disriB3boeYoCywKiFZg5LW5I>

Nov. 20, 10:40 PM - We will continue to share updates - the DOT&PF crew is on the scene, but the slide is still unstable.

⚠️⚠️ #LANDSLIDE: #Roadclosure -- Our Wrangell crew is responding to the landslide on Zimovia Hwy. Please avoid the area until further notice.



City and Borough of Wrangell

November 20 at 9:45 PM ·

PUBLIC NOTICE

11/21/2023 - 3:45AM

11-Mile Zimovia Highway Landslide Update

There are ongoing search and rescue missions being conducted at the 11-mile landslide site. Our local search and rescue team is working with the Alaska State Troopers, USCG, USFS, local contractors, city staff and DOT in a concerted effort to sift through and clear debris. A large-scale search and rescue effort cannot be done at this time as the site is extremely hazardous and unstable. A state geologist will have to come in to assess the site to ensure conditions are safe before proceeding with a full-scale effort.

We ask that public direct all important questions/concerns/inquiries to Mason Villarma, Interim Borough Manager at (360) 981-1010. If you are calling to report a missing person, please call the Wrangell Police Department at (907) 874-3304.

We will provide periodic updates of our ongoing search and rescue mission. The next update will be at 9am AKDT.

No insights to show

Boost a post

👍👍👍 51

6 comments 28 shares

Like

Comment

Share

Most relevant



Write a comment...



Monica Douglas

I can't sleep thinking about everyone. My heart is in Wrangell tonight. Praying with tears for all.



Sharon Monrean

Prayers for all to be safe 🙏❤️🦋
1w Like Reply Hide 3



Iris Booth

Prayers lifted up for Wrangell 🇺🇸🙏
1w Like Reply Hide



Jess Richardson

🙏🙏🙏
1w Like Reply Hide



D0mim Beccat

🙏🙏
1w Like Reply Hide

Most relevant is selected, so some comments may have been filtered out.



Alaska Department of Transportation & Public Facilities

Published by Shannon McCarthy · November 21 at 11:46 AM · 🌐



⚠️⚠️ #Alaska DOT&PF Situation Report

Wrangell, Alaska

11 a.m. Nov. 21, 2023

A landslide occurred after 9 p.m. Monday, Nov. 20, just south of Pat Creek Road in Wrangell Alaska.

The slide covered and effectively closed Zimovia Highway at MP 11. Three single family homes were in the path of the landslide. State and local agency personnel responded, and conducted initial searches for missing persons.

The slide is estimated to be 450 feet wide where it crossed the roadway, with a significant debris field. The slide remained active throughout the night, and the road remains closed. If you are in Wrangell, and are not part of the response, please avoid the area.

DOT&PF is working with the SEOC (Alaska Division of Homeland Security and Emergency Management) on next steps.

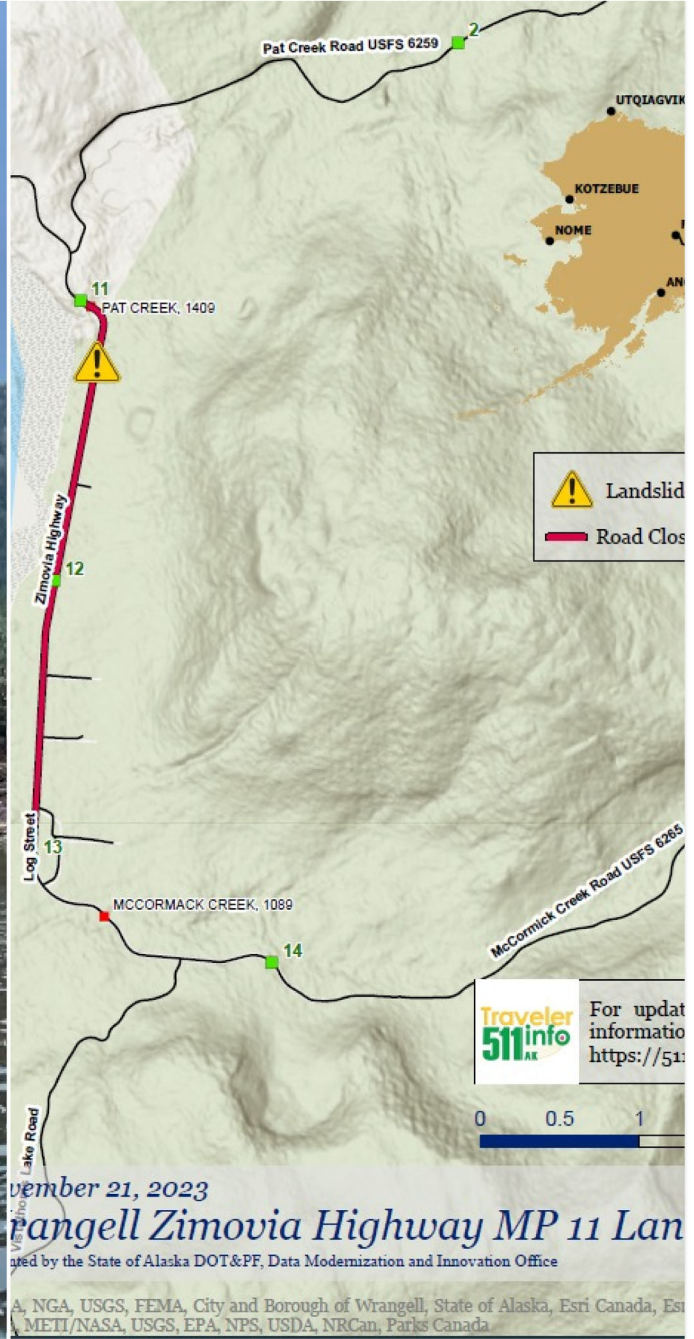
Three DOT&PF personnel landed in Wrangell at approximately 10 a.m. to assist in the multi-agency search and recovery effort:

- DOT geologist to conduct a geotechnical investigation
- Unmanned Aerial System (drone) expert to assist in both search and geotechnical investigation (thermal equipment to assist with Search and Rescue).
- Heavy equipment operator to assist in recovery.

More assets and resources will be brought as needed to assist Wrangell as they need.

We will post more information as it becomes available.

[#wrangellalaska](#)



See insights and ads

Boost post

👍👎👍 375

23 comments 207 shares

Like

Comment

Share

Most relevant



Write a comment...





Author

Alaska Department of Transportation & Public Facilities

For more information on the search for missing persons, please check the Department of Public Safety press release:



1w Like Reply



Damien Munnely
Condolences

1d Like Reply [Send message](#) Hide



Desiree Robinson
prayers stay safe recovery teams and workers 🙏

1w Like Reply Hide



Megan Howes
How awful. Praying for those affected 🙏

1w Like Reply Hide



Kathy Vespa
Our neighbors son and family

1w Like Reply Hide



Leslie Lawrence
Kathy Vespa Oh no, any word? Hugs from Maine.

1w Like Reply Hide



Kathy Vespa
Leslie Lawrence messaged you

1w Like Reply Hide



Jennifer Koenig



1w Like Reply Hide



Top fan
Carla Reidle





Carol Skultka



1w Like Reply Hide



Margarete Haiduschitz-Mckissack



5d Like Reply Send message Hide



Karen V. Marshall



1w Like Reply Hide



Laurie L Carrick



1w Like Reply Hide



Dawn Jensen
Ciara Jensen

1w Like Reply Hide



Michelle LaRose

what an awful thing to bear at what is supposed to be a happy time of the year! 😞
God Bless those who won't be able to have a family Thanksgiving

6d Like Reply Send message Hide



Mary Jo Taintor

That looks HUGE! 🙏

6d Like Reply Send message Hide Edited



Kathryn Guillaum



1w Like Reply Hide



Alex Innes
Bobbi Innes

1w Like Reply Hide



Karla Fennimore
Jim Fisher

1w Like Reply Hide



Arctic Koast
Tay Kins

1w Like Reply Hide

Most relevant is selected, so some comments may have been filtered out.



Alaska Department of Transportation & Public Facilities

Published by Shannon McCarthy · November 22 at 10:14 AM ·



Alaska DOT&PF Situation Report

Wrangell, Alaska

10 a.m. Nov. 22, 2023

Alaska DOT&PF continues to support the response team with aerial drone support, and site safety in order for search and rescue efforts to continue safely. The response team includes the Alaska Wildlife Troopers, Wrangell Police Department, Wrangell Fire Department, US Forest Service, Wrangell Search and Rescue.

Communication remains very challenging at the site.

No clearing of the highway will occur until the Search and Rescue efforts are complete.

Once we are given the go-ahead to start clearing, both state and private sector forces will begin the debris removal process. We will share a timeline for reopening the highway at that time.

Photo credit: Alaska DOT&PF

[#WrangellAlaska](#)



[See insights and ads](#)

[Boost post](#)

245

10 comments 64 shares

Like

Comment

Share

Most relevant



Write a comment...





Author

Alaska Department of Transportation & Public Facilities

For more information about the search and rescue efforts, please review the Department of Public Safety's press release:



1w Like Reply

View 1 reply



Carolyn Bailey
Prayers for all.

2d Like Reply [Send message](#) Hide



Joyce Rogers



6d Like Reply [Send message](#) Hide



Mary Wojtyna



1w Like Reply Hide

View 1 reply



Kerri Hassett
How sad. Hoping for a successful rescue.

6d Like Reply [Send message](#) Hide

Most relevant is selected, so some comments may have been filtered out.



Alaska Department of Transportation & Public Facilities

Published by Shannon McCarthy · 6d · 🌐



Alaska DOT&PF Situation Report

Wrangell, Alaska

12 p.m. Nov. 23, 2023

The Department of Public Safety has moved from a search and rescue to a reactive search for missing persons. The people at the Department of Transportation & Public Facilities remain committed to the ongoing search efforts for those still missing, and are keeping the families and loved ones in our thoughts during this challenging time.

DOT will now begin methodically removing debris from the roadway to improve further search efforts, restore power, and reconnect the 75 homes. DOT&PF experts believe the material is stable enough to begin work.

The debris removal will start on the north side of the highway, beginning with tree removal and work their way to the middle of the slide with the intent to create a one lane road access. This will allow the power company to restore power poles within the slide zone and reconnect power out the road.

Once a one-lane connection is established, DOT&PF will begin work to fully clear the road and establish drainage as needed. Clearing is likely to take longer than a full day of work once started and could take longer as they better understand the material being removed. Material fluidity dictated by rain and on-site water may slow clearing efforts. Equipment includes two excavators and two loaders on the north side with haul trucks, and one excavator ready for operation on the south side of the highway. We expect 8-12 operators to be involved in this restoration work.

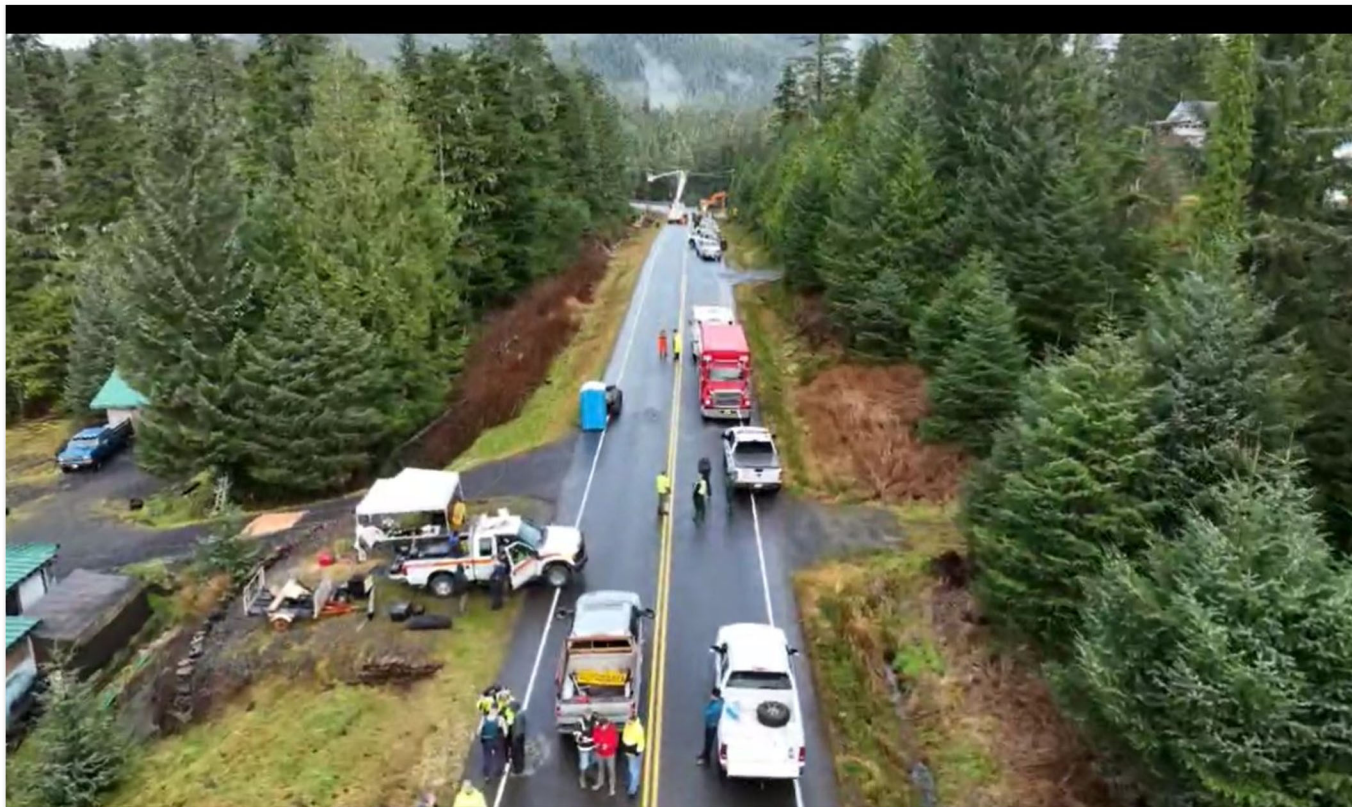
DOT&PF has an on-site engineer directing the work, and is working with a local contractor, with construction and environmental staff monitoring progress. M&O crews via drone will be monitoring the site from above for safety hazards along with geotechnical staff to support as needed.

DOT&PF and our contractor will be working slowly and carefully with a search dog and handler standing by, in case of any signs of the missing persons. In any area of concern, work will stop to until rescue activity is complete.

DOT&PF environmental and right-of-way teams have worked with the Forest Service to acquire permissions to place material at sites on the North and South of the slide. Back up material sites have been coordinated with DNR, if they are needed.

Any excavation has risks, and this excavation contains a large amount of trees and soil and material remains saturated. There are multiple professionals on site observing and trained to identify safety hazards if they occur. The team is also anticipating placing a drone spotter in the air to monitor the work and safety conditions. A licensed engineer is also on site observing and providing guidance.

[#WrangellAlaska](#)



See insights and ads

Boost post

79

1 comment 20 shares

Like

Comment

Share

Most relevant



Write a comment...



Author

Alaska Department of Transportation & Public Facilities

For more information from the Alaska Department of Public Safety please review their update from this morning:

James E. Cockrell
Commissioner
www.DPS.Alaska.gov
STATE OF ALASKA



Department of
Public Safety
Anchorage, Alaska
PRESS RELEASE

Wrangell Landslide Search and Rescue Update
November 23, 2023, 9:20 am

(November 23, 2023 - Wrangell, Alaska) This morning ground search teams have returned to the slide area to search for three missing persons (one adult and two juveniles). K9 teams will be searching along the waterline by small boat and joining ground teams in the slide area at multiple areas of interest. No additional volunteers are needed for the search and rescue effort at this time.

###

EDITORS NOTE: Photos from the government agencies participating in the response effort are being uploaded onto the Alaska Department of Transportation and Public Facilities Flickr account. <https://www.flickr.com/photos/akdota/albums/72177220312881408>

Media Contact: Austin McDaniel, DPS Communications Director, (907) 269-5413, dps.pio@alaska.gov

6d Like Reply





Alaska Department of Transportation & Public Facilities

Published by Shannon McCarthy · 4d ·



Alaska DOT&PF Situation Report

Wrangell, Alaska

9:30 a.m. Nov. 25, 2023

The Alaska DOT&PF team continues to work on clearing Zimovia Highway. Removing trees on the northside of the slide continues at a steady pace but is time consuming. Crews are starting up on the south side of the slide today, Saturday, Nov. 25. Both the north and south crews have rescue dog teams standing by, to assist as needed.

Our field personnel estimate that the highway has approximately 3,500 cubic yards of material to move. Early signs are that the asphalt has been damaged. Once we have the debris removed we will be able to determine what repairs are needed.

Picture from DOT&PF, work on north side of Zimovia Highway, Nov. 24, 2023.

[#WrangellAlaska](#)



[See insights and ads](#)

[Boost post](#)



Like

Comment

Share

Most relevant



Write a comment...



Champagne Cici

Alaska is blessed with good soil if you have got any doubt please prove me wrong



3d Like Reply [Send message](#) Hide



Amber Lynn

Hannah Etengoff-Hoyt

4d Like Reply [Send message](#) Hide

Most relevant is selected, so some comments may have been filtered out.



Alaska Department of Transportation & Public Facilities

Published by Shannon McCarthy · 3d ·



Alaska DOT&PF Situation Report

Wrangell, Alaska

10 a.m. Nov. 26, 2023

Road Update: Yesterday, Saturday, Nov. 25, the road clearing crew was able to remove a significant amount of material from the roadbed. About 200' of clearing remained as of 8 a.m. this morning. The asphalt that was missing on the north bound lane is isolated to that area, and the majority of road has pavement intact.

Crews also uncovered the culvert crossing the road. They have removed debris to restore the flow. Today, the contractor is prepping the ditches to better handle water coming off the slope before further progressing on the road.

Scent detection dog teams are standing by to assist as needed.

Photo: DOT&PF Drone station on Zimovia Highway.

[#wrangellalaska](#)





160

5 comments 30 shares

Like

Comment

Share

Most relevant



Write a comment...



Angela Lee Mitchell

Your work is appreciated as it must be very difficult - thank you!

3d Like Reply [Send message](#) Hide



Ralph Patrick McGreevy

My sympathies and condolences about the tragic landslide. I landed in Wrangell briefly in 2018 but did not get a chance to explore the town as much as I would have liked. Alaska is so breathtakingly beautiful and wonderful but there are serious natural... **See more**

8h Like Reply [Send message](#) Hide

Most relevant is selected, so some comments may have been filtered out.



Alaska Department of Transportation & Public Facilities

Published by Shannon McCarthy · 2d · 🌐



Nov. 28, 2023 5 p.m. UPDATE:

The Zimovia Highway openings for local traffic will remain the same for the next couple of days. We'll post more information tomorrow, Nov. 29. Thank you for your continued patience.

[#wrangellalaska](#)

Alaska DOT&PF Situation Report

Wrangell, Alaska

2:30 p.m. Nov. 27, 2023

Crews were able to complete the debris removal from the roadway yesterday. Today, the power company is reestablishing poles and lines to reconnect the homes to the south.

Because safety remains a concern, DOT&PF is continuing to monitor the slope above the highway for movement and settling. Tomorrow, we will provide limited public road openings for local traffic during the following time periods:

8 a.m. to 8:30 a.m.

12 p.m. to 12:30 p.m.

3:30 to 4 p.m.

*Please do not stop in the slide area.

DOT&PF appreciates the hard work of the contractor, staff and local and state agency partners, and the patience of the community while we finish this work. Thank you.

[#wrangellalaska](#)

Photo credit: State of Alaska DHS&EM



[See insights and ads](#)

[Boost post](#)

1K

34 comments 128 shares

Like

Comment

Share

Most relevant



Write a comment...



Loretta Rice
Amazing crew!!! Thank you!!!



Olga Norris

Wow they are do fast and hood at their job thank you for your hood work you all deserve a metal

1d Like Reply [Send message](#) Hide



Kathy Robinson

Olga Norris I agree, everyone has done a awesome job.

19h Like Reply [Send message](#) Hide

Most Relevant is selected, so some replies may have been filtered out.



Peter Rano

Good job guys

1d Like Reply [Send message](#) Hide



Millie Schoonover

Prayers for the workers & Wrangell folks 🙏❤️🙏

1d Like Reply [Send message](#) Hide



Silvano Viveiros

Prayers for the people of Wrangell alaska 🙏❤️🙏

2d Like Reply [Send message](#) Hide



View 1 reply



Lance Lawyer

Our prayers go out to you

I am sorry for the community's loss

A long time ago it was my community as well... [See more](#)

1d Like Reply [Send message](#) Hide



Lorna Hamil

God's blessing and comfort for the people of Wrangell

1d Like Reply [Send message](#) Hide



Tonia Stevens

Prayers for the community of Wrangell

1d Like Reply [Send message](#) Hide



Xandor Beck

Prayers 🙏 Y'all are doing an amazing job ❤️

15h Like Reply [Send message](#) Hide



Val Massie

Thank you ❤️

1d Like Reply [Send message](#) Hide

View 1 reply



Majken Mathis

Praving all continues to go well until all is completed



Connie Graff

So sad for the family that did not survive and so very devastating for the community. God bless everyone involved.

1d Like Reply [Send message](#) Hide Edited



Randy Tibbetts

Praying for the people 🙏

1d Like Reply [Send message](#) Hide



Paula Evans

Prayers for people of Wrangell

1d Like Reply [Send message](#) Hide

View 1 reply



Kristy Herman

Alek Herman

1d Like Reply [Send message](#) Hide



Vicki Bennett Rutland

Linda Lee Deibel

1d Like Reply [Send message](#) Hide



Dawndi Keim

Blu Keim

1d Like Reply [Send message](#) Hide



Dak Simonton

Paula Diane

1d Like Reply [Send message](#) Hide

View 1 reply



Debra Gundersen

Prayers for the families of the deceased

17h Like Reply [Send message](#) Hide



Darryl Racine

Cap in hand and head bowed, mad respects to the workers and prayers to Wrangell.

22h Like Reply [Send message](#) Hide



Cheryl Ruksznis

Another mud slide?

1d Like Reply [Send message](#) Hide



Wayde Sharpe

They find everyone

1d Like Reply [Send message](#) Hide

View 1 reply



1d Like Reply [Send message](#) Hide

Most relevant is selected, so some comments may have been filtered out.