



August 6, 2018

Sally Schlichting

Environmental Program Manager I

Alaska Department of Environmental Conservation

410 Willoughby Ave, Suite 303

PO Box 111800

Juneau, AK 99811-1800

RE: Wrangell Junkyard treated soil packaging, transportation, and disposal 2018.

Ms. Schlichting,

NRC Alaska is pleased to provide the following Project Status update for the Wrangell Junkyard Solid Waste transportation and disposal Project. Our goal is to provide a status update on a weekly basis, with photos and notes as appropriate so that all interested parties may remain apprised on progress in the field on a regular basis. We are currently performing work as detailed in the soil transport and disposal plan and the Storm Water Pollution Prevention Plan (SWPPP) for the project as detailed under Alaska Pollutant Discharge Elimination System (APDES) permit # AKR10FQ51. This Project Status Update covers project activities as performed between **July 30, 2018 and August 5, 2018**.

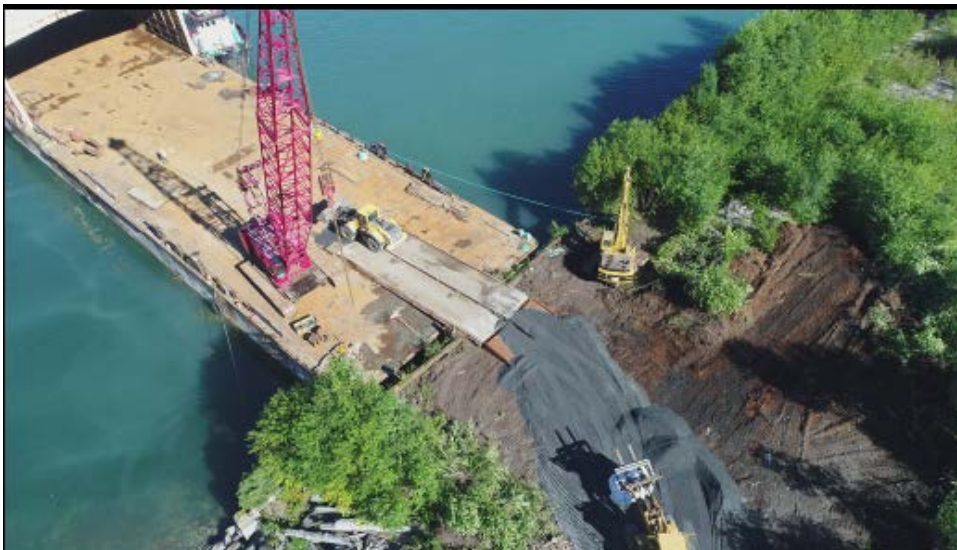
Project Activities:

Activities during the 2018 field season will focus on the loading of Flexible Intermediate Bulk Containers (FIBC). Transfer of FIBC's to the Silver Bay Logging Mill Site (SBLMS) barge staging area for loading and transport to a disposal facility in Oregon. Implementation of initial SWPPP measures and road maintenance.

Project activities accomplished:

- **All** FIBC's stored at the junkyard site have been transported to the SBLMS and staged in preparation for barge loading.
- **NRC Alaska** and **BW Enterprises** continued to load FIBC's, **163 FIBC's** were loaded this week for a total loaded count of **1013**.
- **NRC Alaska** performed weekly SWPPP inspections.
- Barge arrival in Wrangell on 8/4/18, began loading barge on 8/5/18.

EXCELLENCE IN ENVIRONMENTAL & EMERGENCY SOLUTIONS



EXCELLENCE IN ENVIRONMENTAL & EMERGENCY SOLUTIONS



Project Challenges Encountered:

- Configuring barge landing area upon arrival of barge for FIBC loading.

Anticipated Project activities:

- **NRC Alaska** will inspect the site monthly per the SWPPP requirements, and also inspect the existing stockpile.
- **NRC Alaska** and **BW Enterprises** will continue loading FIBC's and transporting to SBLMS barge loading area for staging and eventual transport to disposal facility.
- **NRC Alaska** anticipates the first barge load out to begin on August 5th, 2018.

We trust this information is adequate to meet your needs. If you have any questions, please feel free to contact **NRC Alaska** at your convenience.

Sincerely,

NRC Alaska

A handwritten signature in blue ink, appearing to read 'S. Daniel Strucher'.

S. Daniel Strucher

Sr. Project Manager