

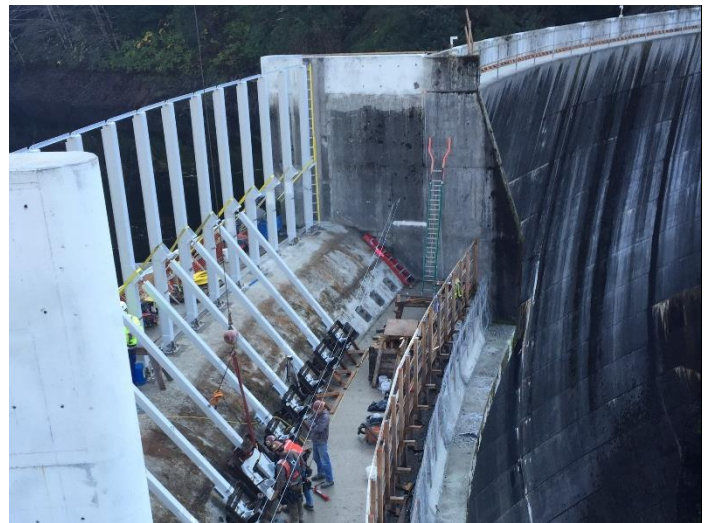
SWAN LAKE RESERVOIR EXPANSION PROJECT UPDATE: Civil work in the spillway is substantially complete and critical path activities are shifting to mechanical and electrical systems. Vertical gate commissioning will begin at the end of October.



Site tour for SEAPA Board and Staff



Installing flashboard kicker assemblies



Flashboard kicker base alignment



Flashboard columns erected



Placing flashboard panels between columns



Lower half of vertical gate in place



Hydraulic gate actuator - center pier



Lifting upper half of vertical gate into slot



Perspective view of spillway work



Top half of vertical gate lowered into place

Controlling lake level throughout the project has been critically important for worker safety, project security, and to ensure adequate reach with the crane for placement of major components. These objectives have been successfully achieved and we have begun filling the reservoir. This will allow us to perform final operational checks and facilitate the contractor's removal of construction equipment off of the lake.

Civil work near the intake structure is substantially complete. Modifications have been made to the parapet wall and bulkhead to make them watertight and address higher lake levels. A log removal platform extension has been added to enhance worker safety while lifting woody debris from the lake. A pre-cast concrete trench has been install in the road way. This will reduce overhead line hazards and provide a protected path for electric supply and hydraulic line routing from the intake structure to the dam.



Plunge pool baseline survey

The new reservoir spillway path will be concentrated through the gate on the North side of the original spillway slot. Our Federal Energy Regulatory Commission (FERC) license requires that we periodically survey the contour of the bottom of the plunge pool located at the base of the dam to monitor for potential erosion. The plunge pool was pumped dry, photographed, and surveyed to firmly establish a baseline for future comparisons.

IMPORTANT PUBLIC SAFETY ANNOUNCEMENT: Due to construction zone safety requirements, public access to the Swan Lake facilities will be closed for the duration of the Swan Lake Expansion Project. The project will be completed prior to the end of the year and public service announcements will advise when public access has been restored. We apologize for this temporary inconvenience and look forward to safely completing this important energy storage enhancement project.

CONTACT US: SEAPA is headquartered in Ketchikan and maintains a “part-time” satellite office in Wrangell. We welcome visitors and look forward to sharing more about our role as your regional wholesale generation and transmission entity. We also invite you to visit our website, which is a great resource for further information.

www.seapahydro.org

Thank you for the opportunity to serve!



Placing log removal platform concrete



Intake building watertight parapet wall and bulkhead