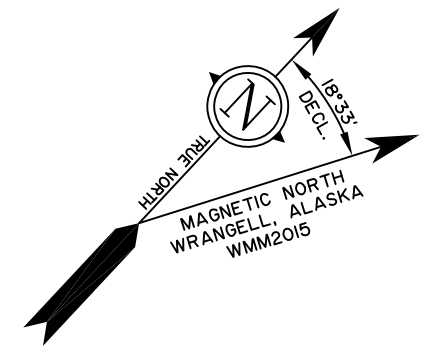


U.S.S. No. 3403

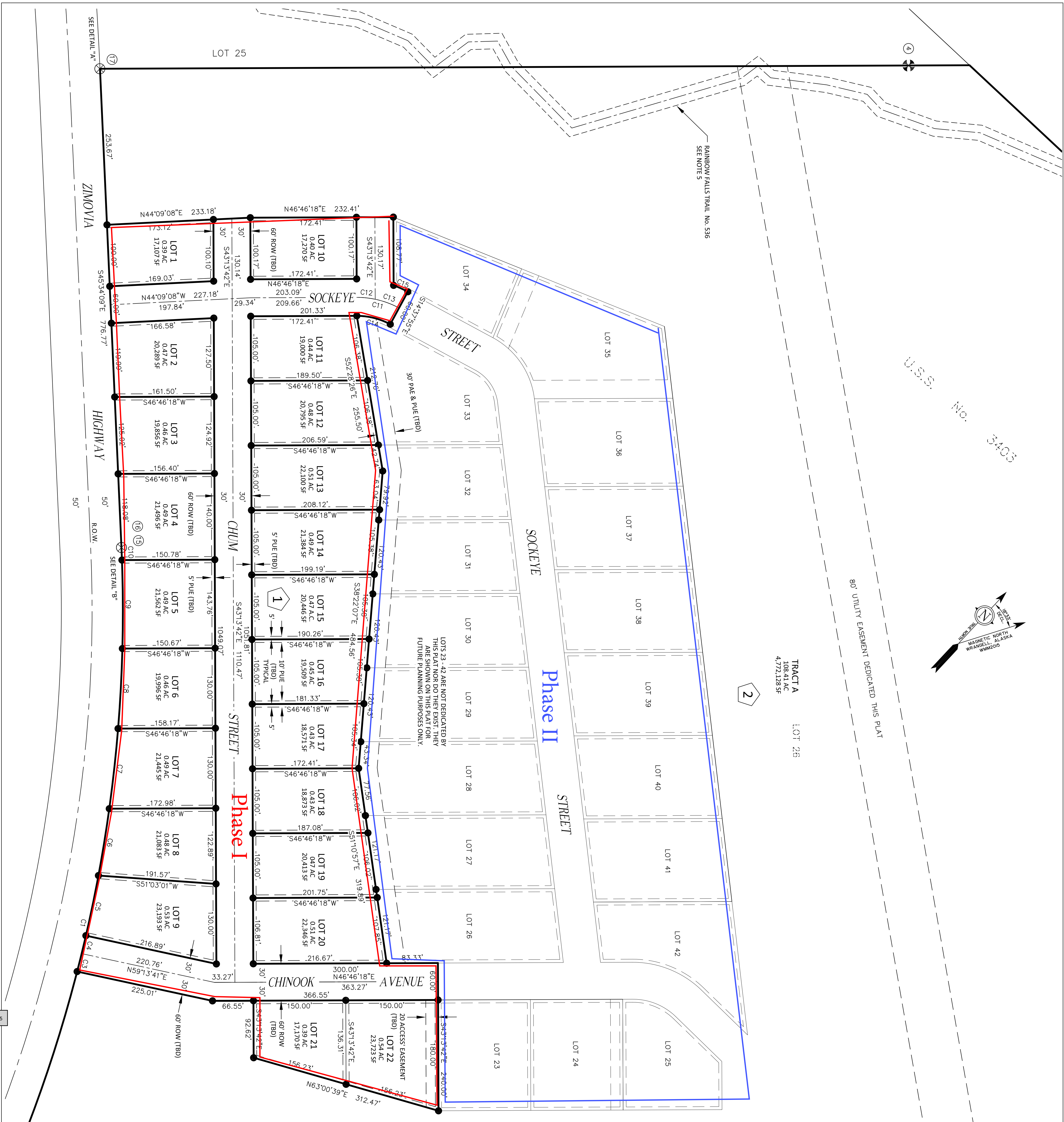


80' UTILITY EASEMENT DEDICATED THIS PLAT

TRACTA A
108.41 AC
4,772,128 SF

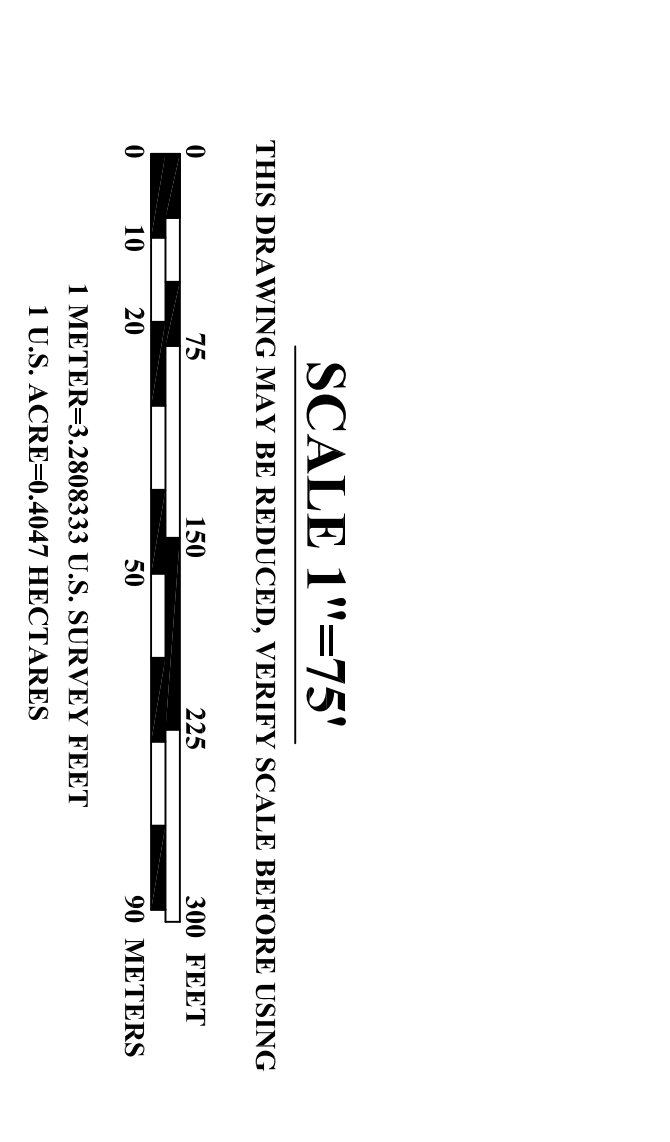
LOT 26

RAINBOW FALLS TRAIL, No. 536
SEE NOTE 5

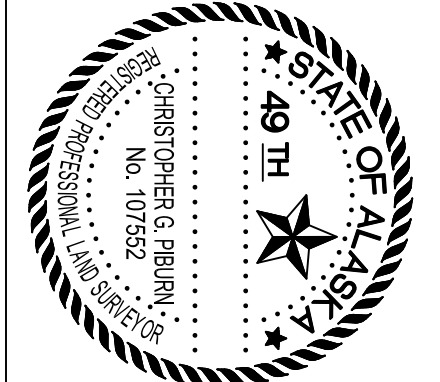


LEGEND	
	BLOCK NUMBER
	PRIMARY MONUMENT REMOVED THIS SURVEY
	FOUND BLM/GLO MONUMENT
	SECONDARY MONUMENT SET THIS SURVEY
	SECONDARY MONUMENT RECOVERED
	MONUMENT NUMBER
	SET PRIMARY MONUMENT THIS SURVEY
	FOUND PRIMARY MONUMENT
	UNSURVEYED
	SURVEYED
	ROW CENTERLINE
	OVERHEAD ELECTRICAL LINE
(R1)	RECORD PER U.S. No. 3709 (PLAT 65-250)
(R2)	RECORD PER SHOEMAKER BAY SUBD. (PLAT 87-9)
(R3)	RECORD PER U.S. No. 3403 (SUBD. OF LOT 4, U.S.S. No. 3403)
(R4)	RECORD PER TRUST LAND SURVEY, No. 2018-10 (PLAT 2020-5)
XX	MEASURED DATA
P/AE	PUBLIC ACCESS EASEMENT
P/E	PUBLIC UTILITY EASEMENT
(TBD)	TO BE DEDICATED TO THE PUBLIC BY THIS PLAT

CURVE TABLE					
CURVE DELTA	RADIUS ARC CHORD	CH.	BEARING		
C1	30°09'57"	2343.15	1233.65	N80°29'13"W	
C2	13°07'45"	2343.15	536.93	S21°58'08"E	
C3	0°44'02"	2343.15	30.02	S28°54'01"E	
C4	0°44'01"	2343.15	30.01	S29°38'03"E	
C5	2°26'16"	2343.15	99.70	S31°13'12"E	
C6	2°41'32"	2343.15	110.10	S33°47'06"E	
C7	3°11'59"	2343.15	130.84	S36°43'52"E	
C8	3°11'04"	2343.15	130.22	S39°55'23"E	
C9	3°30'57"	2343.15	143.76	S43°16'24"E	
C10	0°32'19"	2343.15	22.03	N45°18'02"W	
C11	28°35'47"	143.49	71.62	70.88	S61°04'11"W
C12	12°04'04"	143.49	30.22	30.17	S52°48'20"W
C13	16°31'43"	143.49	41.39	41.25	S67°06'14"W
C14	28°35'47"	113.49	56.64	56.06	S67°04'11"W
C15	8°21'49"	173.49	25.33	25.30	S71°11'11"W
C16	0°00'02"	5614.08	0.06	0.06	N45°34'09"W
C17	0°02'27"	2343.15	1.67	1.67	S45°32'58"E



PRELIMINARY



SHEET 2 OF 4

R&M ENGINEERING & SURVEYING, INC.
1000 W. BROADWAY, SUITE 300
ANCHORAGE, ALASKA 99501
Phone: (907) 252-9177
Fax: (907) 252-9411
Phone: (907) 506-4830

CERTIFICATE OF AUTHORIZATION #: CS76

SHOEMAKER BAY SUBDIVISION II

A SUBDIVISION AND REPLAT OF
LOT 26, OF U.S.S. No. 3403;
BLOCKS 1, 3, & TRACTA A, OF SHOEMAKER BAY SUBDIVISION (PLAT 87-5);
AND
PUBLIC RIGHT-OF-WAY AND UTILITY EASEMENT VACATIONS
CREATING
LOTS 1 - 22 WITHIN BLOCK 1, AND TRACTA A WITHIN BLOCK 2,
SHOEMAKER BAY SUBDIVISION II
CONTAINING 121.86 ACRES MORE OR LESS

LOCATED WITHIN
SECTIONS 8 & 12, TOWNSHIP 63 SOUTH, RANGE 84 EAST
COPPER RIVER MERIDIAN, ALASKA
WHADELL RECORDING DISTRICT

DRAWN BY: MCH
DATE: AUGUST 2020

CHECKED: CGP

R&M PROJECT NO.: 202725

SCALE: 1"=75'