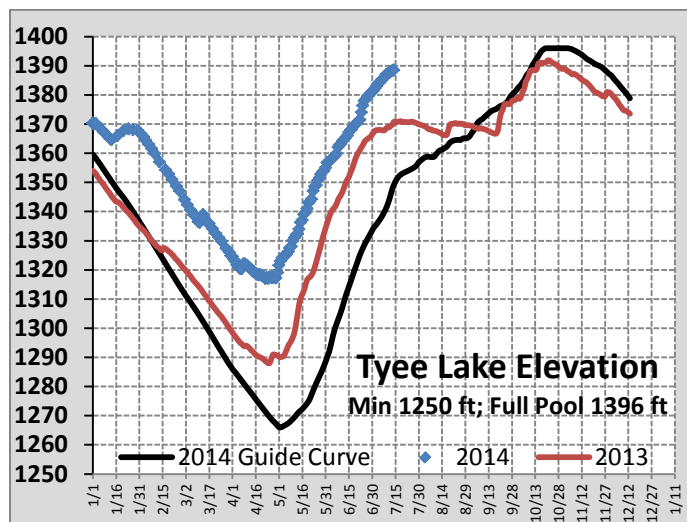
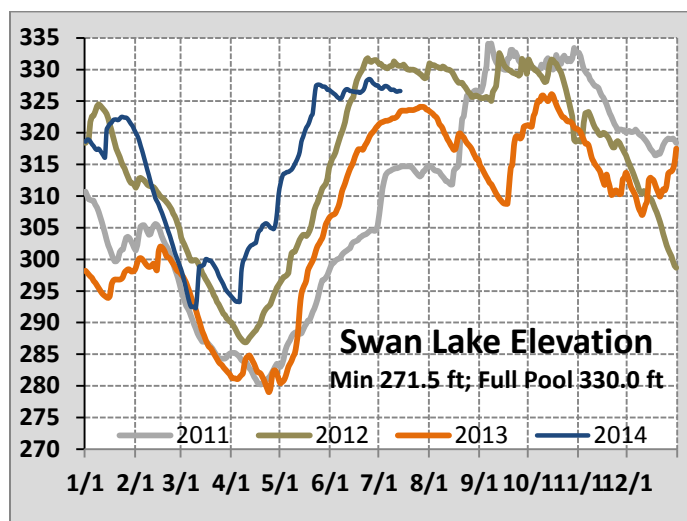


**RESERVOIR LEVELS:** SEAPA's reservoir levels are trending above average, which puts us in a favorable position heading into the fish processing season. As discussed in our previous Community Flyer, reservoirs are managed following SEAPA's Board approved operations plan. The guidelines are established based on historical inflow data, long-term weather predictions, and system load forecasts. The actual day-to-day reservoir management is a dynamic process that uses real-time system data and current weather information to maximize water resource efficiency. As part of this process, SEAPA chairs a weekly meeting with our three member utilities and provides load tables to shape power generation output across the system.



*Tyee Lake Power Plant & Employee Housing*



**TYEE LAKE OPERATIONS:** SEAPA is poised to assume daily operations of the Tyee Lake facilities. We have worked closely with Petersburg and Wrangell to facilitate a smooth transition and anticipate completing the final handover in August. Additionally, a tentative agreement with the International Brotherhood of Electrical Workers (IBEW) has been pre-negotiated. When ratified, the new IBEW labor agreement will provide the necessary framework for SEAPA to make offers of employment to the existing TBPA employees. SEAPA has also made a commitment to hire a second "regular" employee on the Brushing Crew, which is currently filled by a part-time "temporary" employee. SEAPA will continue to staff our Wrangell office.

**NEW WEBSITE:** SEAPA recently launched its new website at [www.seapahydro.org](http://www.seapahydro.org). We encourage everyone to visit and discover the wealth of information available at your fingertips.

The user friendly site is loaded with great photos and includes the following:

**BOARD:** Meet the SEAPA Board of Directors. These are local volunteer representatives, appointed by the Mayors of SEAPA's member utility communities.

- Download upcoming meeting agendas
- View meeting archives
- Listen to audio recordings of meetings

**ABOUT US:** This section underscores SEAPA's transparency and commitment to public engagement. It provides a broad range of foundational documents and supporting information. It also showcases the member utilities that we serve.

- Governance
  - SEAPA Bylaws
  - Joint Action Agency Agreement
  - Power Sales Agreement
  - SEAPA 101
- Financials
  - Last 3 years of Audited Financials
  - Various presentations
- Member Community Profiles
  - Ketchikan, Petersburg and Wrangell
- Photo Gallery
- Community Flyer Archives

**HISTORY:** A brief summary of how SEAPA evolved. We are also working on a detailed timeline that will be added to this tab when complete.

**FACILITIES:** Details regarding SEAPA owned facilities.

- Swan Lake Hydro and Transmission
- Tyee Lake Hydro and Transmission
- Swan-Tyee Intertie (STI) Transmission

**SYSTEM INFO:** A real-time snapshot of the SEAPA interconnected system.

**PROJECTS:** Provides details on SEAPA's larger renewal and replacement projects.

- Swan Lake Reservoir Expansion
- Helipad Replacements
- Tyee Weir Installation
- Supervisory Control & Data Acquisition (SCADA) Upgrade
- Communications System Upgrade
- Regional Hydrosite Evaluation

**LEARN:** This is a great new section that lets visitors learn about energy consumption, the basic differences between a lake tap and a dam, and also a list of definitions to help understand the terminology of the power industry.

**CONTACT US:** This tab provides important information and allows visitors to conveniently ask a question or make a comment.

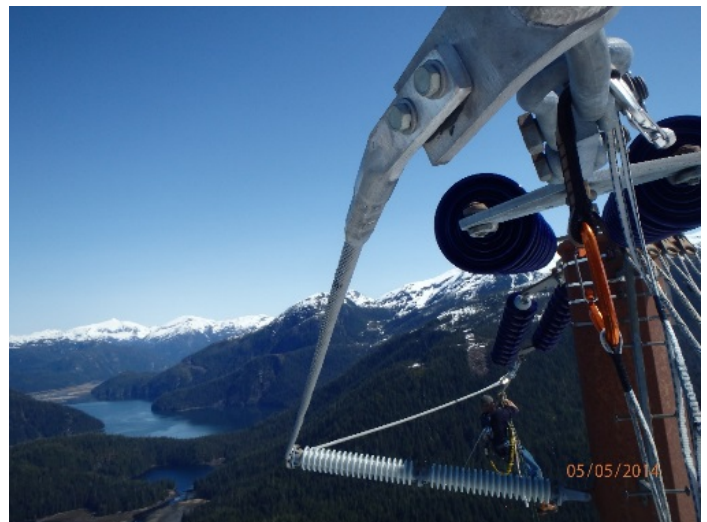
- Emergency contacts
- Office hours and location
- Key staff contact information
- Careers

**TRANSMISSION LINE MAINTENANCE:** SEAPA's transmission system spans 175 miles, from Petersburg, to Wrangell, Tyee Lake, Swan Lake, and down to Ketchikan. It traverses extremely rugged terrain and for the most part is only accessible by helicopter. SEAPA works closely with our line maintenance contractor Chatham Electric to plan and coordinate annual maintenance activities. This year's activities included aerial visual inspections, tower climbing inspections, pole cap and dampener installations, and a variety of other general repairs. SEAPA's contractor also completed the Heritage Harbor pole realignment in Wrangell and a pole replacement in the Petersburg substation.



*Wrangell Pole Realignment*

The existing poles near Heritage Harbor were located in the sidewalk path and were also susceptible to damage by road maintenance equipment.



*Look close and you'll see a line maintenance worker!*

**EMPLOYMENT OPPORTUNITIES:** For anyone interested in exciting new job opportunities, please link to [seapahydro.applicantpro.com/jobs/](http://seapahydro.applicantpro.com/jobs/) Thank you!