

**CITY & BOROUGH OF WRANGELL, ALASKA**

**WRANGELL MARINE SERVICE CENTER  
CONCRETE PAVING PHASE II**

**ADDENDUM TO THE CONTRACT**

---

---

<b>Addendum No:</b>	<b>1</b>	<b>Current Bid Opening Date:</b>
Pages This Addendum:	Four (4)	<b>March 5, 2013 at 2:00 P.M.</b>
Previous Addenda:	None	Previous Bid Opening Date:
		March 5, 2013 at 2:00 P.M.

---

---

**To: All Planholders of Record**

**February 27, 2013**

**The contract documents are modified as indicated herein. All other terms and conditions remain unchanged. Bidders are required to acknowledge this addendum on the Bid Proposal. Make the following changes to the contract documents:**

**PROJECT MANUAL**

**Item No. 1** Section 00500 – Agreement, Article 2. Contract Completion Time, Notes 1:

Replace Note 1 with the following:

Substantial completion shall be met when the concrete has achieved 80% F'c compressive strength, pavement is sealed and joint sealant complete.

**DRAWINGS**

**Item No. 2** Drawing Sheets 1.02:

General Notes: Add Note 5 as follows:

5. City of Wrangell Quarry Use Plan

The City & Borough of Wrangell (CBW) owns a parcel on Zimovia Highway (in the vicinity of Heritage Harbor) that contains an existing quarry into an exposure of rock. The CBW rock samples were put through a series of laboratory tests, including LA Abrasion loss, Degradation loss, and Sodium Sulfate soundness. The laboratory test results have been compared against specifications and minimum test standards for the *Marine Service Center, Concrete Paving, Phase II* project. The analysis indicates that the CBW quarry is suitable for the following marketable rock products:

1. Rip rap
2. Shot Rock Borrow, Class A and Foundation Backfill
3. Bedding material

Requirements for Use of CBW Quarry:

1. Currently the site exhibits: a) timber and soil exposed at the top of the quarry faces, which will eventually require development to access additional rock; b) a lack of pit floor space and an adequate quantity of benches to facilitate equipment access to certain areas for drilling and blasting. Unfavorable site conditions should be remedied through the blasting design and oversight recommendations in the management plan.
2. The CBW will charge a royalty at the rate of 10% of the quantity extracted by the Contractor. The 10% royalty shall consist of drilling, blasting, and stockpiling within the quarry 10% of the total quantity removed from the quarry. Royalty rates are very different than commodity market prices. Royalty gives the buyer the right to extract a resource and involves minimal investment by the CBW, where oversight and management costs and responsibilities are left to the Contractor.
3. An approved and comprehensive mining and management plan shall be designed and implemented to maximize the resource production, improve safety and stability during active uses, and facilitate reclamation of the site. The Contractor's plan shall be approved by the City & Borough of Wrangell prior to mobilizing equipment into the quarry pit.
4. Clearing and leveling of additional area will be necessary to accommodate processing and stockpiling of the resource, including rock of various gradations, overburden, and timber.
5. There is limited access and pit floor space within the City's quarry property. It may be necessary for the Contractor to coordinate with the adjacent land owner in order to use their property for the purpose of extraction, processing and staging.

**Item No. 3** Drawing Sheets 2.02:

Replace this sheet in its entirety with the attached Addendum No. 1, Drawing Sheet 2.02, 6 of 18 – Site Plan – Partial Area 1.

**Item No. 4** Drawing Sheets 3.01 through 3.06:

The clear distance between the top of concrete and top of rebar shall be 2" Minimum to 2.5" Maximum clear. .

**Item No. 5** Drawing Sheets 3.04:

Replace this sheet in its entirety with the attached Addendum No. 1, Drawing Sheet 3.04, 14 of 18 – Typical Sections and Details.

**Item No. 6** Drawing Sheet E2.01:

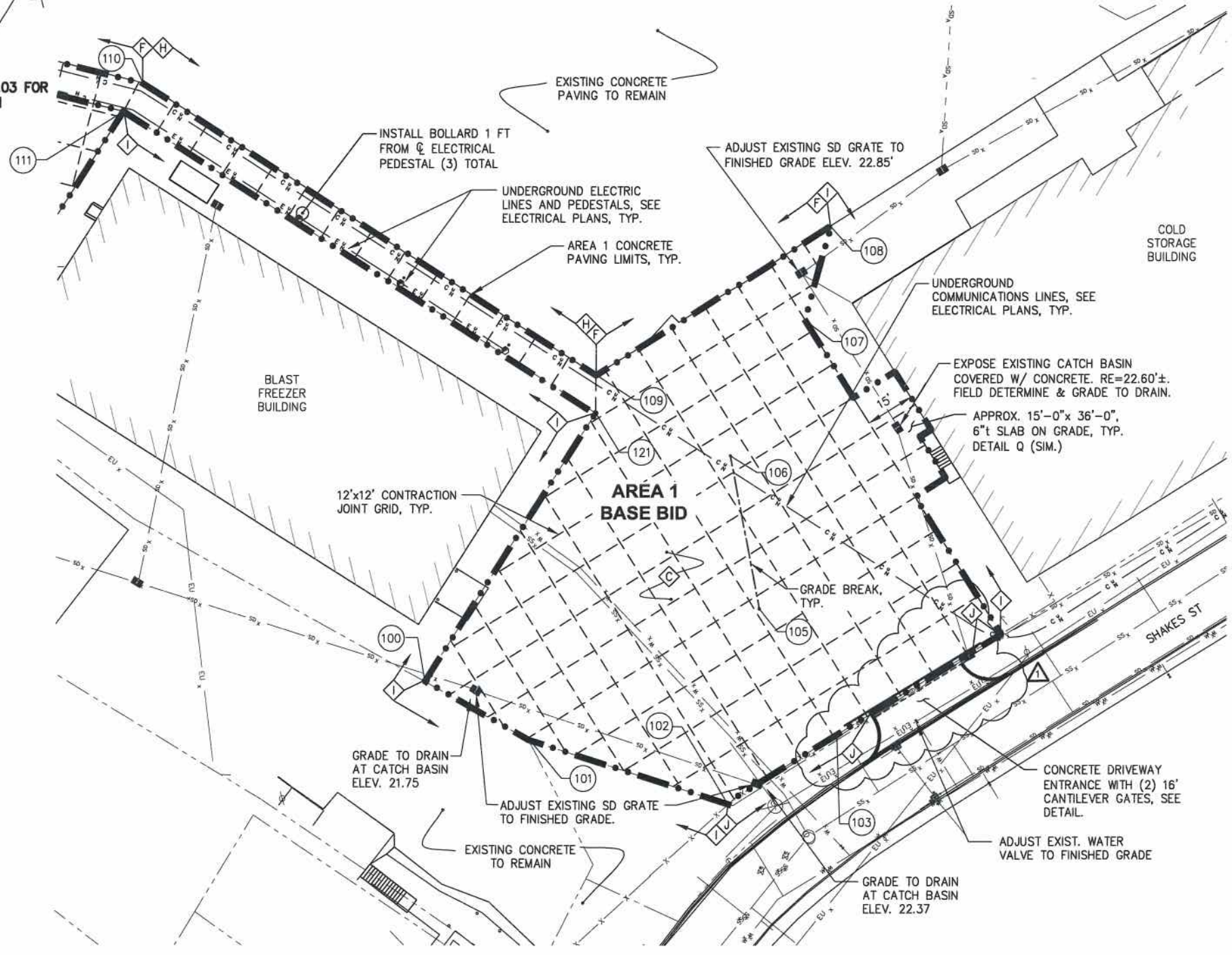
- Revise the conductor size for the circuit between power pedestal no. 4 and power pedestal no 5 from 4 no. 3/0, 1 no. 6 gnd to 4 no. 1/0, 1 no. 4 gnd.
- Revise the ground conductor size from power pedestal no. 4 to Panel S from no. 6 to no. 4.

**END OF ADDENDUM NO.1**

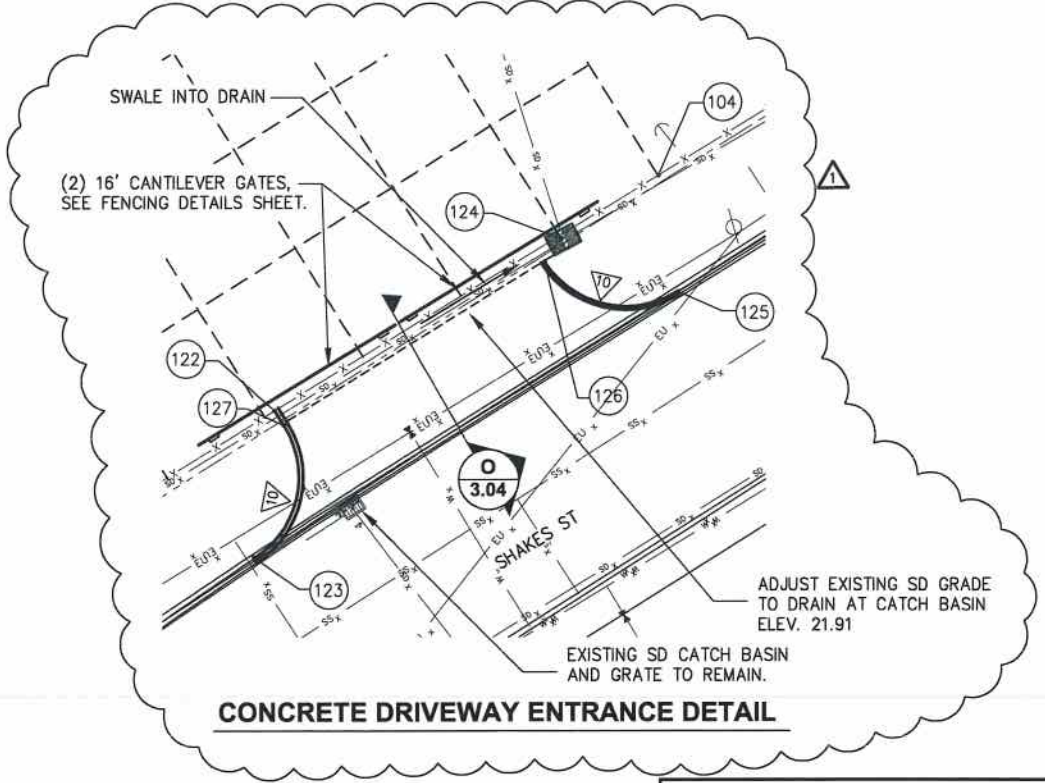




SEE SHEET 2.03 FOR CONTINUATION



LAYOUT TABLE				
Point #	Elevation	Northing	Easting	Description
100	22.02	8488.91	11046.06	FG CONC, ME
101	22.03	8490.12	11082.72	FG CONC, ME
102	22.64	8504.82	11145.14	FG CONC, ME
103	22.91	8539.76	11162.14	FG CONC, ME
104	21.96	8592.64	11189.49	FG CONC
105	23.98	8560.69	11122.48	FG CONC
106	23.50	8596.39	11090.26	FG CONC
107	23.02	8643.87	11088.53	FG CONC, ME
108	23.52	8672.94	11080.26	FG CONC, ME
109	23.42	8596.51	11042.37	FG CONC, ME
110	23.38	8601.12	10877.18	FG CONC, ME
111	23.28	8590.44	10876.36	FG CONC, ME
121	23.39	8586.49	11048.30	FG CONC, ME
122	22.61	8551.45	11168.30	END CURB
123	ME	8536.67	11174.21	PC, ME
124	22.42	8581.59	11184.75	C GRATE
125	ME	8583.26	11197.66	PC, ME
126	22.43	8578.79	11184.15	END CURB PT
127	22.61	8550.69	11169.78	PT



**ADDENDUM NO. 1**

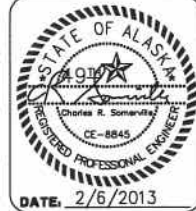
REVISIONS					
REV.	DATE	DESCRIPTION	DWN.	CKD.	APP.
Δ	2/26/13	ADDENDUM NO. 1	WRB	PLR	CRS

**P N D**  
ENGINEERS, INC.

9360 Glacier Highway, Ste. 100  
Juneau, Alaska 99801  
Phone: 907-586-2093  
Fax: 907-586-2099  
www.pndengineers.com

DESIGN: PLR    CHECKED: PLR  
DRAWN: WRB    APPROVED: CRS

SCALE: SCALE IN FEET  
0    20    40 FT.



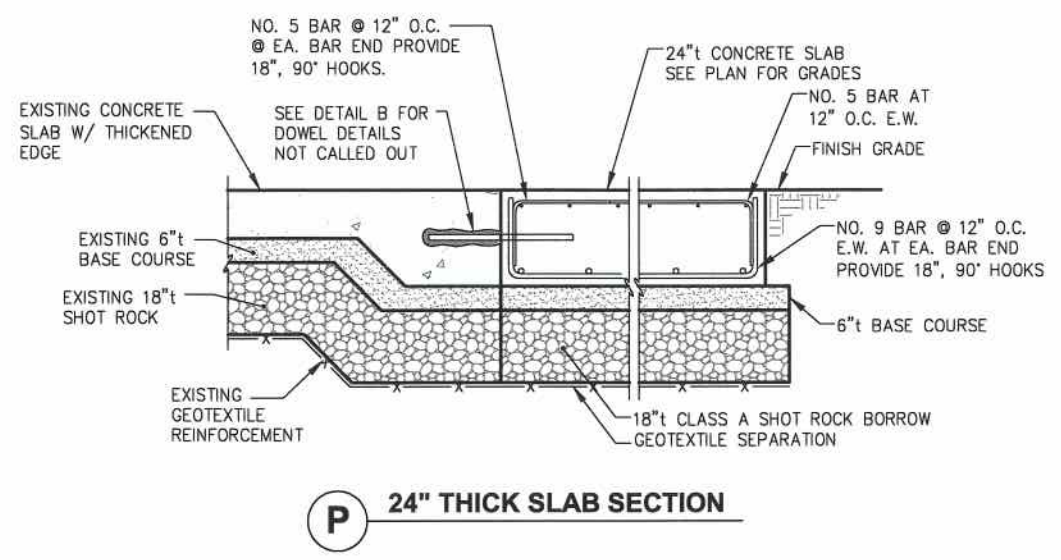
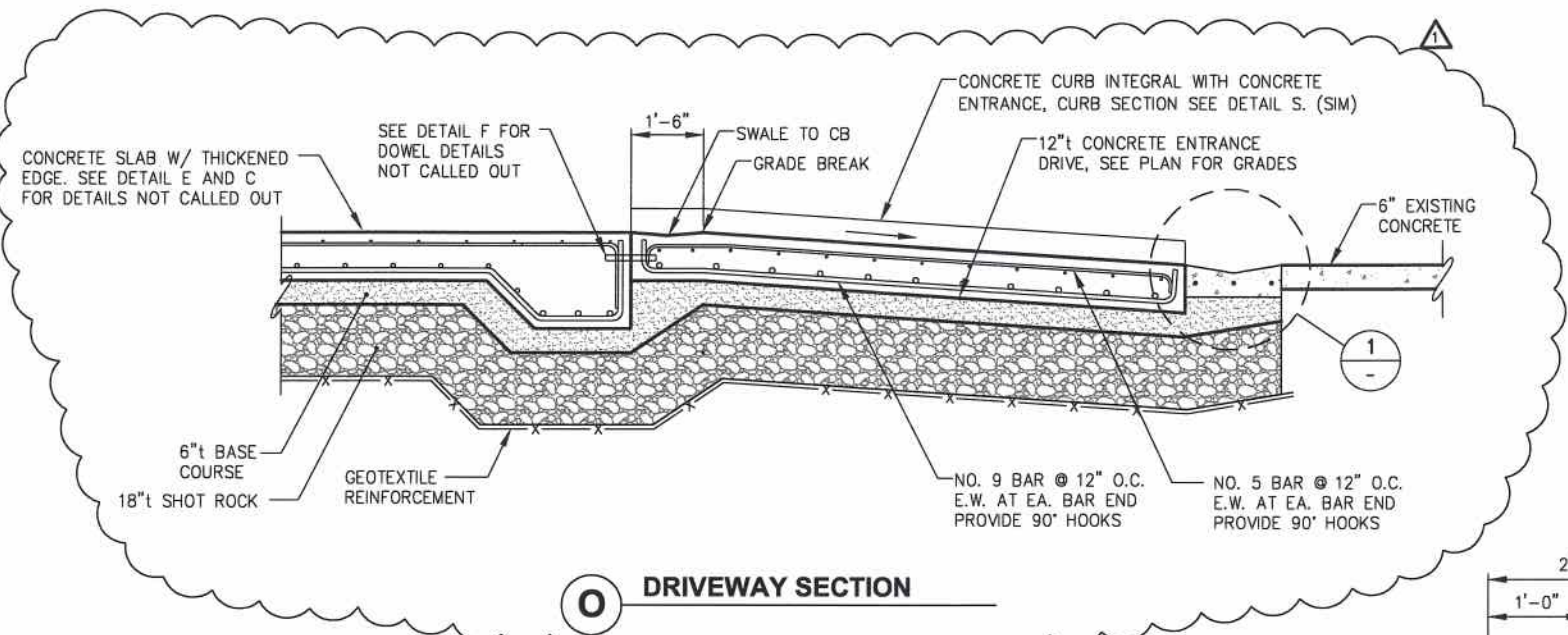
CITY AND BOROUGH OF WRANGELL, ALASKA  
**WRANGELL MARINE SERVICE CENTER**  
CONCRETE PAVING- PHASE II

SHEET TITLE:  
**SITE PLAN - PARTIAL AREA 1**

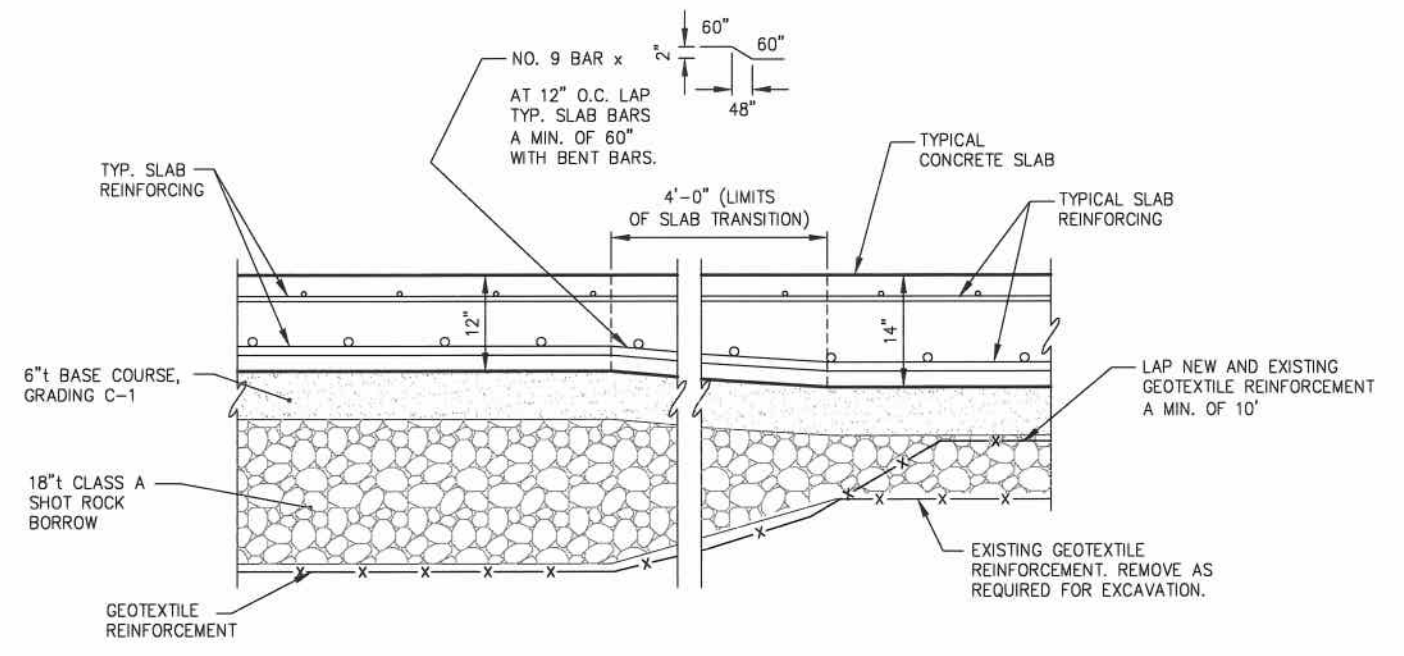
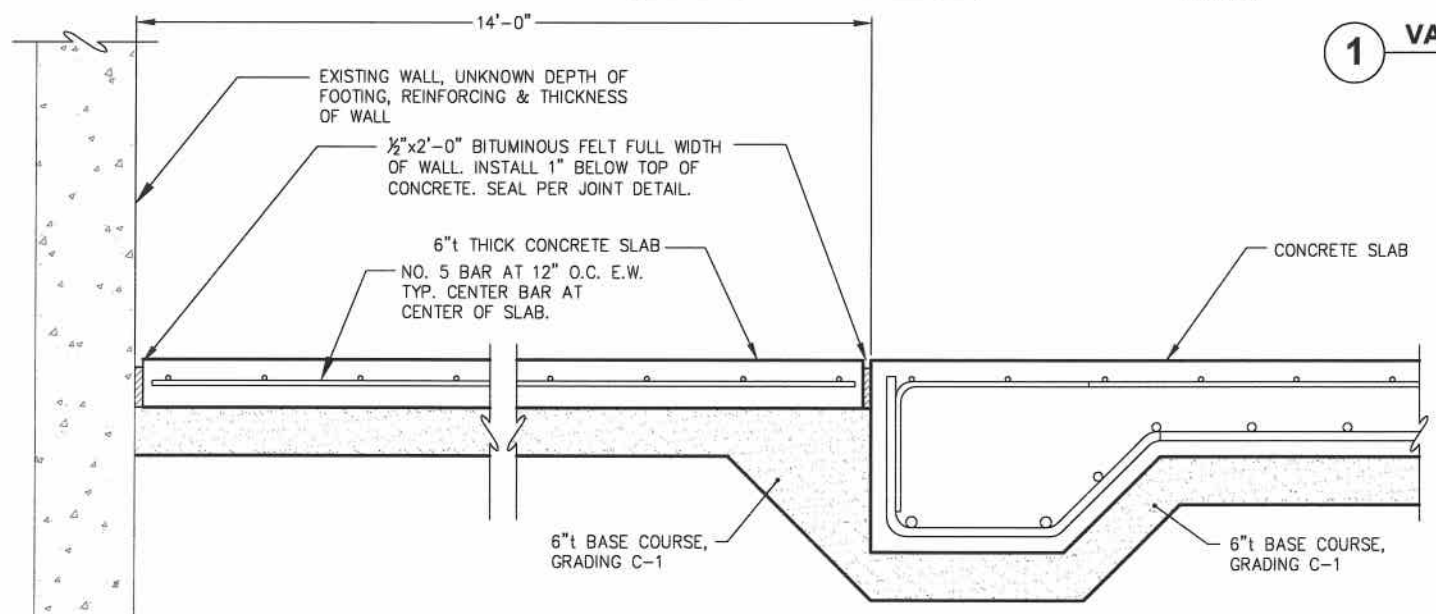
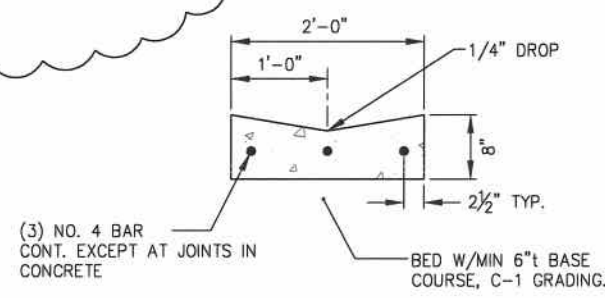
PND PROJECT NO. 112071.03    DWG. FILE: 2.01\_DWG

**2.02**  
SHEET 6 OF 18





**NOTE:**  
SUBGRADE NOT SHOWN FOR CLARITY. SEE DETAIL A OR B DEPENDING ON LOCATION FOR SUBGRADE CONDITIONS, TYP. THIS SHEET



**Q SLAB TRANSITION AT TRAILER STORAGE BUILDING**

**R TYPICAL TRANSITION SECTION**

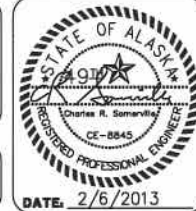
**ADDENDUM NO. 1**

REVISIONS					
REV.	DATE	DESCRIPTION	DWN.	CKD.	APP.
Δ	2/26/13	ADDENDUM NO. 1	WRB	PLR	CRS

**PND ENGINEERS, INC.**

9360 Glacier Highway, Ste. 100  
Juneau, Alaska 99801  
Phone: 907-586-2093  
Fax: 907-586-2099  
www.pndengineers.com

DESIGN: MDS    CHECKED: PLR    SCALE: NTS  
DRAWN: WRB    APPROVED: CRS



**CITY AND BOROUGH OF WRANGELL, ALASKA  
WRANGELL MARINE SERVICE CENTER  
CONCRETE PAVING- PHASE II**

SHEET TITLE: **TYPICAL SECTIONS AND DETAILS**

PND PROJECT NO. 112071.03    DWG. FILE: 3.04\*.DWG

**3.04**  
SHEET 14 OF 18

DATE: 2/6/2013