

**CITY AND BOROUGH OF WRANGELL, ALASKA**  
**Wrangell Barge Ramp Concrete Paving**

**ADDENDUM TO THE CONTRACT**

---

**Addendum No: 1**

**Current Bid Opening Date:**  
**July 15, 2016 at 10:00 AM**

Pages This Addendum: Two (2), Including Attached Drawing

Previous Addenda: None (0)

---

**To: All Bidders of Record**

**July 8, 2016**

The contract documents are modified as indicated herein. All other terms and conditions remain unchanged. Bidders are required to acknowledge this addendum. Make the following additions to the contract documents:

Item 1: SPECIFICATIONS

Section 03305 Concrete Paving: Replace Part 2.1, A with following concrete mix design:

2.1, A. Concrete shall conform to the following requirements:

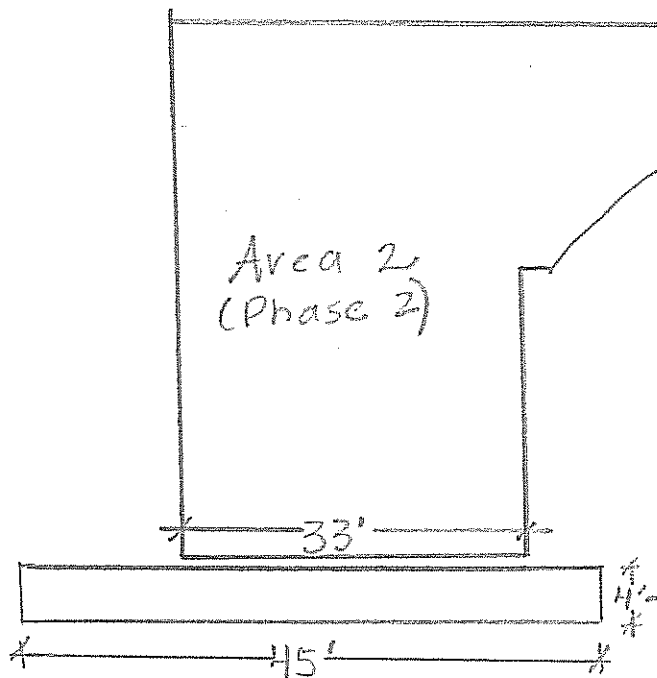
Minimum Cement Content (94 lb.sacks/cy)	7.0
Maximum Water/Cement Ratio	0.44
Slump Range in Inches	4" max.
Entrained Air Range in Percentage	5% - 8%
Coarse Aggregate Rock (AASHTO Gradation)	No. 67
Fine Aggregate Sand (AASHTO Gradation)	M-6
Minimum Design Strength, psi (f'c)	5,000

Item 2: DRAWINGS

Add Drawing Sheet 10, Sidewalk Replacement (attached hereto)

END OF ADDENDUM NO. 1

# Sidewalk/Curb Replacement



Replace 45' of concrete sidewalk and curb  
Widen curb cut by five feet (5') to the  
east side of the opening. Cut at existing  
joints and provide minimum six feet (6')  
of sloped sidewalk. Match existing slope.  
6" thick sidewalk and curb.

WRANGELL BARGE RAMP CONCRETE PAVING

July 8, 2016  
Addendum 1

Page 10