

**CITY AND BOROUGH OF WRANGELL, ALASKA**

**WOOD STREET IMPROVEMENTS PROJECT  
ADDENDUM TO THE PROJECT DRAWINGS**

---

**Addendum No:** 2  
**Addendum Date:** April 22, 2016

**Current Bid Opening Date:**  
April 28, 2016 at 2:00 PM

Pages This Addendum: Seven (7)

Previous Addenda: Addendum 1, April 14, 2016

---

To: All Proposers

The following corrections, changes, additions, deletions, revisions and/or clarifications are hereby made a part of the Documents for the Wood Street Improvements, dated April, 2016. In case of conflicts between this Addendum and previously issued documents, this Addendum shall take precedence. Acknowledge receipt of this Addendum in the space provided on the Bid Form. Failure to do so may subject the Bidder to disqualification.

**SECTION 01025 – MEASURE AND PAYMENT**

**Item No. 1** – Replace Section 1.23 E with the following paragraph:

Payment for Electrical under the Base Bid shall be made at the Lump Sum Price named in the Bid Schedule under Pay Item No. 16000.1, which payment shall constitute full compensation for all WORK described in Division 16 - Electrical, as shown on the plans and as directed by the ENGINEER.

**SECTION 02202 – EXCAVATION AND FILL**

**Item No. 1** – Add Section 3.5 B:

Requirement #3 regarding royalty payments for use of the quarry shall not apply. No royalties will be charged for materials extracted.

**Item No. 2** – Add Section 3.5 C:

Materials in the quarry that are already blasted, but not crushed and stockpiled, are available for use by the CONTRACTOR.

Since the posting of the Notice Inviting Bids, the OWNER has completed installation of the new electrical system contained in the Contract Documents. Rather than replacing the underground electrical utilities, new poles and overhead lines have been installed. Following this overhead installation, the work remaining in the Contract Documents includes demolition of existing utilities according to Section 02220 and connection of the PRV vault to existing overhead lines and installation of a new conduit across the road according to Division 16 and the Drawings. Consequently, the following changes to the drawings shall be made as summarized below and as attached to this Addendum.

### **DRAWING G2.01**

**Item No. 1** – Add existing overhead electrical poles and utility lines installed by OWNER along south side of Wood St alignment.

### **DRAWING E1.01**

**Item No. 1** – Add existing overhead electrical poles and utility lines installed by OWNER along south side of Wood St alignment. Locations shown approximate.

**Item No. 2** – Secondary power and telephone to PRV vault shall not be demolished.

**Item No. 3** – Secondary power along south side of Wood St need not be demolished as this work has already been completed by OWNER.

**Item No. 4** – Add power and fiber optic pedestals and vaults already installed by OWNER. Locations shown approximate.

### **DRAWING E2.01**

**Item No. 1** – Add existing overhead electrical poles and utility lines installed by OWNER along south side of Wood St alignment. Locations shown approximate.

**Item No. 2** – Remove all work related to underground electrical, television, telephone, and lighting along north side of Wood St alignment. Not in contract.

**Item No. 3** – Remove all work related to underground electrical and telephone to PRV vault and primary power pedestal (already installed). Not in contract.

**Item No. 4** – Add work related to electrical connection from existing pole to relocated PRV vault.

**Item No. 5** – Add work related to 2” conduit (no conductors) crossing road with capped end installed beyond sidewalk but within Wood St ROW.

## **DRAWING E2.02**

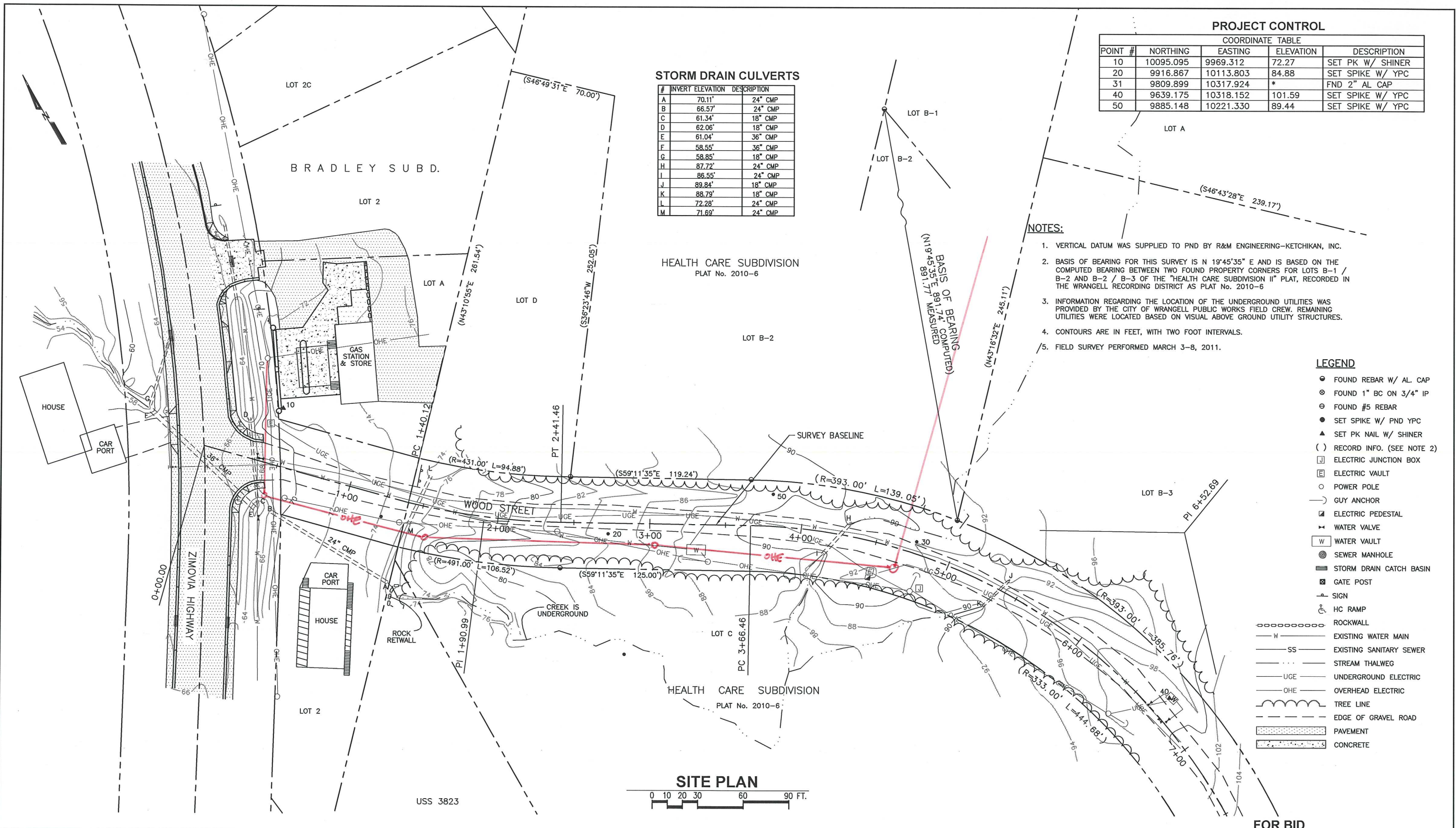
**Item No. 1** – Remove unused Detail 3 – Handhole

**Item No. 2** – Remove unused Detail 2 – Underground Roadway Crossing

**Item No. 3** – Remove unused Detail 5 – Primary Junction Cabinet

**Item No. 4** – Remove unused Section 1 – Sidewalk

3/29/16 Drawings 2011\114018.01 - Wood Street Improvement\100% For Bid\_2016\114018.01 - G2.01.dwg



**STORM DRAIN CULVERTS**

#	INVERT ELEVATION	DESCRIPTION
A	70.11'	24" CMP
B	66.57'	24" CMP
C	61.34'	18" CMP
D	62.06'	18" CMP
E	61.04'	36" CMP
F	58.55'	36" CMP
G	58.85'	18" CMP
H	87.72'	24" CMP
J	86.55'	24" CMP
K	89.84'	18" CMP
L	88.79'	18" CMP
M	72.28'	24" CMP
N	71.69'	24" CMP

**PROJECT CONTROL**

COORDINATE TABLE				
POINT #	NORTHING	EASTING	ELEVATION	DESCRIPTION
10	10095.095	9969.312	72.27	SET PK W/ SHINER
20	9916.867	10113.803	84.88	SET SPIKE W/ YPC
31	9809.899	10317.924	*	FND 2" AL CAP
40	9639.175	10318.152	101.59	SET SPIKE W/ YPC
50	9885.148	10221.330	89.44	SET SPIKE W/ YPC

**NOTES:**

1. VERTICAL DATUM WAS SUPPLIED TO PND BY R&M ENGINEERING-KETCHIKAN, INC.
2. BASIS OF BEARING FOR THIS SURVEY IS N 19°45'35" E AND IS BASED ON THE COMPUTED BEARING BETWEEN TWO FOUND PROPERTY CORNERS FOR LOTS B-1 / B-2 AND B-2 / B-3 OF THE "HEALTH CARE SUBDIVISION II" PLAT, RECORDED IN THE WRANGELL RECORDING DISTRICT AS PLAT No. 2010-6
3. INFORMATION REGARDING THE LOCATION OF THE UNDERGROUND UTILITIES WAS PROVIDED BY THE CITY OF WRANGELL PUBLIC WORKS FIELD CREW. REMAINING UTILITIES WERE LOCATED BASED ON VISUAL ABOVE GROUND UTILITY STRUCTURES.
4. CONTOURS ARE IN FEET, WITH TWO FOOT INTERVALS.
5. FIELD SURVEY PERFORMED MARCH 3-8, 2011.

**LEGEND**

- FOUND REBAR W/ AL. CAP
- ⊗ FOUND 1" BC ON 3/4" IP
- ⊙ FOUND #5 REBAR
- SET SPIKE W/ PND YPC
- ▲ SET PK NAIL W/ SHINER
- ( ) RECORD INFO. (SEE NOTE 2)
- ⊠ ELECTRIC JUNCTION BOX
- ⊞ ELECTRIC VAULT
- POWER POLE
- GUY ANCHOR
- ⊞ ELECTRIC PEDESTAL
- ⊞ WATER VALVE
- ⊞ WATER VAULT
- ⊞ SEWER MANHOLE
- ⊞ STORM DRAIN CATCH BASIN
- ⊞ GATE POST
- SIGN
- ⊞ HC RAMP
- ⊞ ROCKWALL
- W — EXISTING WATER MAIN
- SS — EXISTING SANITARY SEWER
- ··· — STREAM THALWEG
- UGE — UNDERGROUND ELECTRIC
- OHE — OVERHEAD ELECTRIC
- ⊞ TREE LINE
- — — EDGE OF GRAVEL ROAD
- ⊞ PAVEMENT
- ⊞ CONCRETE

**SITE PLAN**



FOR BID



1736 Fourth Avenue S., Suite A  
Seattle, Washington 98134  
P: 206.624.1387  
www.pndengineers.com



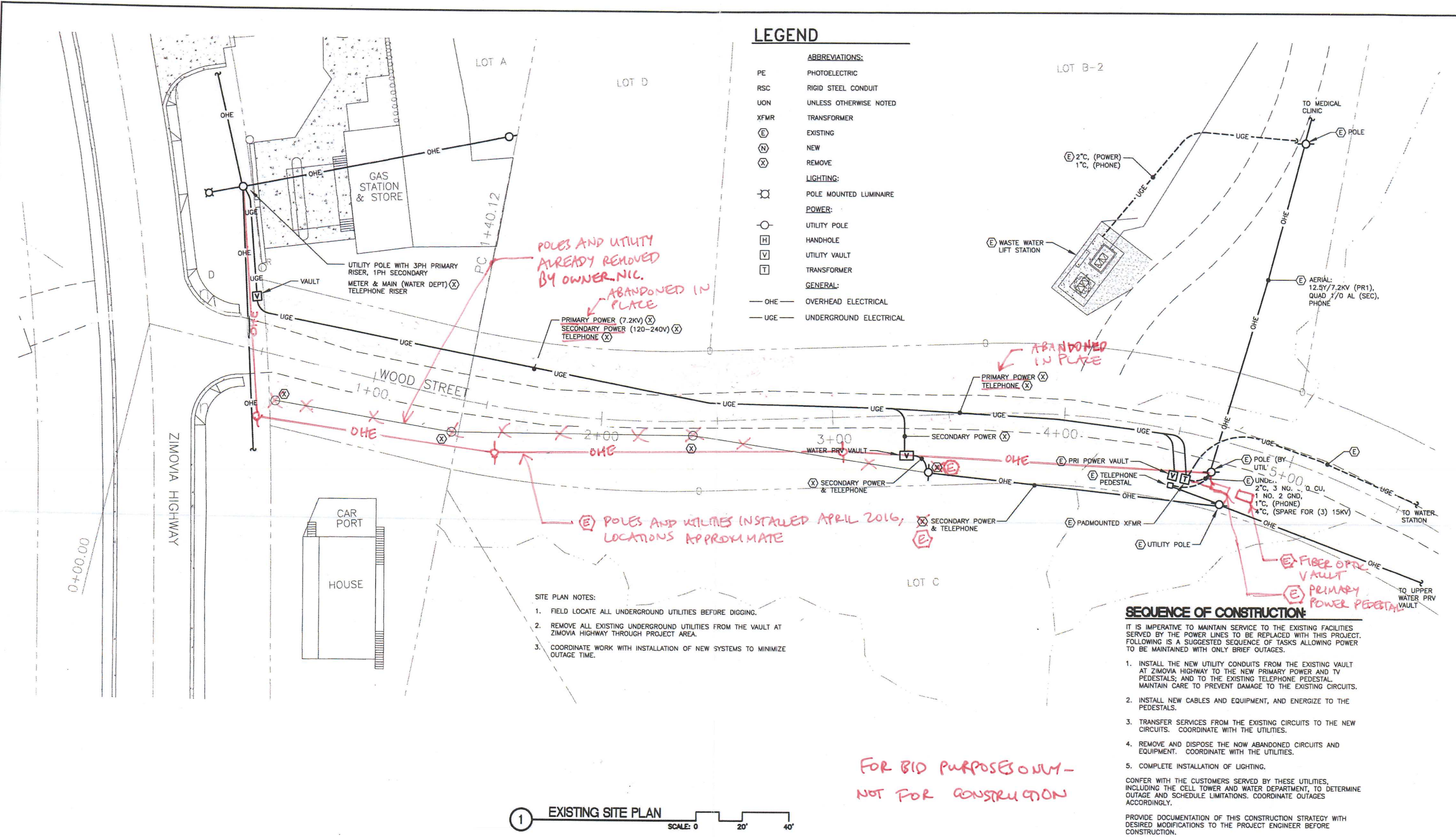
PND ENGINEERS, INC. IS NOT RESPONSIBLE FOR SAFETY PROGRAMS, METHODS OR PROCEDURES OF OPERATION, OR THE CONSTRUCTION OF THE DESIGN SHOWN ON THESE DRAWINGS. WHERE SPECIFICATIONS ARE GENERAL OR NOT CALLED OUT, THE SPECIFICATIONS SHALL CONFORM TO STANDARDS OF INDUSTRY. DRAWINGS ARE FOR USE ON THIS PROJECT ONLY AND ARE NOT INTENDED FOR REUSE WITHOUT WRITTEN APPROVAL FROM PND. DRAWINGS ARE ALSO NOT TO BE USED IN ANY MANNER THAT WOULD CONSTITUTE A DETRIMENT DIRECTLY OR INDIRECTLY TO PND.

REVISIONS		
REV	DATE	DESCRIPTION

PROJECT:		<b>WOOD STREET IMPROVEMENTS</b>	
TITLE:		<b>SITE SURVEY</b>	
DESIGNED BY:	MT	PROJECT NO.:	114018.01
DRAWN BY:	DRH	DATE:	MARCH 2016
CHECKED BY:	SR	SCALE:	NOTED
SHEET NO.:			<b>G2.01</b>

**LEGEND**

- ABBREVIATIONS:**
- PE PHOTOELECTRIC
  - RSC RIGID STEEL CONDUIT
  - UON UNLESS OTHERWISE NOTED
  - XFMR TRANSFORMER
  - (E) EXISTING
  - (N) NEW
  - (X) REMOVE
- LIGHTING:**
- ☉ POLE MOUNTED LUMINAIRE
- POWER:**
- UTILITY POLE
  - HANDHOLE
  - ▭ UTILITY VAULT
  - ⊞ TRANSFORMER
- GENERAL:**
- OHE — OVERHEAD ELECTRICAL
  - UGE — UNDERGROUND ELECTRICAL



- SITE PLAN NOTES:**
1. FIELD LOCATE ALL UNDERGROUND UTILITIES BEFORE DIGGING.
  2. REMOVE ALL EXISTING UNDERGROUND UTILITIES FROM THE VAULT AT ZIMOVIA HIGHWAY THROUGH PROJECT AREA.
  3. COORDINATE WORK WITH INSTALLATION OF NEW SYSTEMS TO MINIMIZE OUTAGE TIME.

**SEQUENCE OF CONSTRUCTION:**

- IT IS IMPERATIVE TO MAINTAIN SERVICE TO THE EXISTING FACILITIES SERVED BY THE POWER LINES TO BE REPLACED WITH THIS PROJECT. FOLLOWING IS A SUGGESTED SEQUENCE OF TASKS ALLOWING POWER TO BE MAINTAINED WITH ONLY BRIEF OUTAGES.
1. INSTALL THE NEW UTILITY CONDUITS FROM THE EXISTING VAULT AT ZIMOVIA HIGHWAY TO THE NEW PRIMARY POWER AND TV PEDESTALS; AND TO THE EXISTING TELEPHONE PEDESTAL. MAINTAIN CARE TO PREVENT DAMAGE TO THE EXISTING CIRCUITS.
  2. INSTALL NEW CABLES AND EQUIPMENT, AND ENERGIZE TO THE PEDESTALS.
  3. TRANSFER SERVICES FROM THE EXISTING CIRCUITS TO THE NEW CIRCUITS. COORDINATE WITH THE UTILITIES.
  4. REMOVE AND DISPOSE THE NOW ABANDONED CIRCUITS AND EQUIPMENT. COORDINATE WITH THE UTILITIES.
  5. COMPLETE INSTALLATION OF LIGHTING.
- CONFER WITH THE CUSTOMERS SERVED BY THESE UTILITIES, INCLUDING THE CELL TOWER AND WATER DEPARTMENT, TO DETERMINE OUTAGE AND SCHEDULE LIMITATIONS. COORDINATE OUTAGES ACCORDINGLY.
- PROVIDE DOCUMENTATION OF THIS CONSTRUCTION STRATEGY WITH DESIRED MODIFICATIONS TO THE PROJECT ENGINEER BEFORE CONSTRUCTION.

*FOR BID PURPOSES ONLY - NOT FOR CONSTRUCTION*

1 EXISTING SITE PLAN SCALE: 0 20' 40'

Apr 17, 2013 - 11:32am C:\Projects\137 PND\08 Wood Street Road & Utility Improvements\Drawings\E1.01.dwg (Layout1 tab)



1736 Fourth Avenue S., Suite A  
Seattle, Washington 98134  
Phone: 206-624-1387  
Fax: 206-624-1388  
mail@pndengineers.com

**HAIGHT & ASSOCIATES**  
CONSULTING ELECTRICAL ENGINEERS  
526 Main Street, Juneau, AK 99801  
(907) 586-9788

PND ENGINEERS, INC. IS NOT RESPONSIBLE FOR SAFETY PROGRAMS, METHODS OR PROCEDURES OF OPERATION, OR THE CONSTRUCTION OF THE DESIGN SHOWN ON THESE DRAWINGS. WHERE SPECIFICATIONS ARE GENERAL OR NOT CALLED OUT, THE SPECIFICATIONS SHALL CONFORM TO STANDARDS OF INDUSTRY. DRAWINGS ARE FOR USE ON THIS PROJECT ONLY AND ARE NOT INTENDED FOR REUSE WITHOUT WRITTEN APPROVAL FROM PND. DRAWINGS ARE ALSO NOT TO BE USED IN ANY MANNER THAT WOULD CONSTITUTE A DETRIMENT DIRECTLY OR INDIRECTLY TO PND.

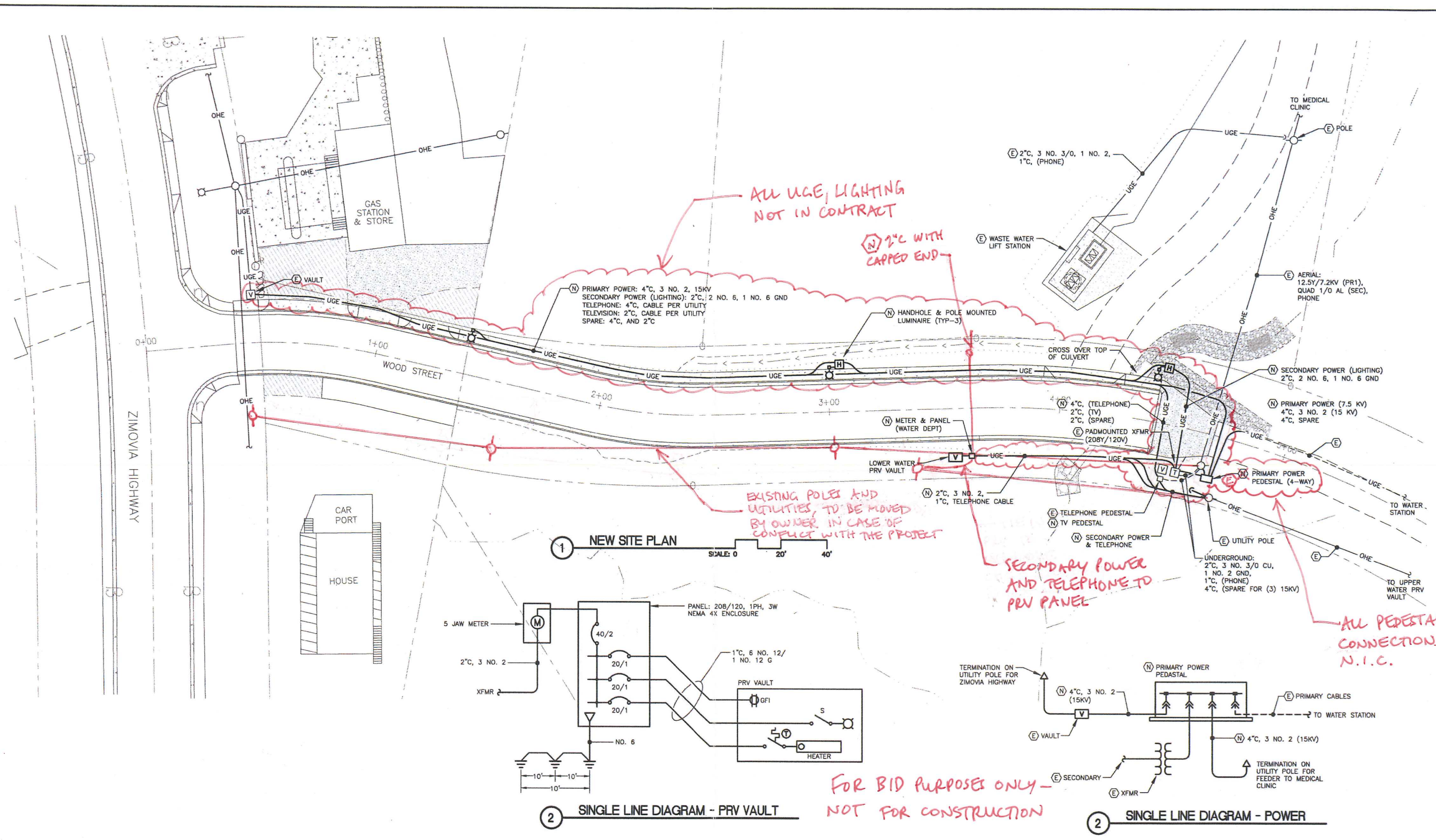
REVISIONS		
REV.	DATE	DESCRIPTION

PROJECT: **WOOD STREET IMPROVEMENT DESIGN**

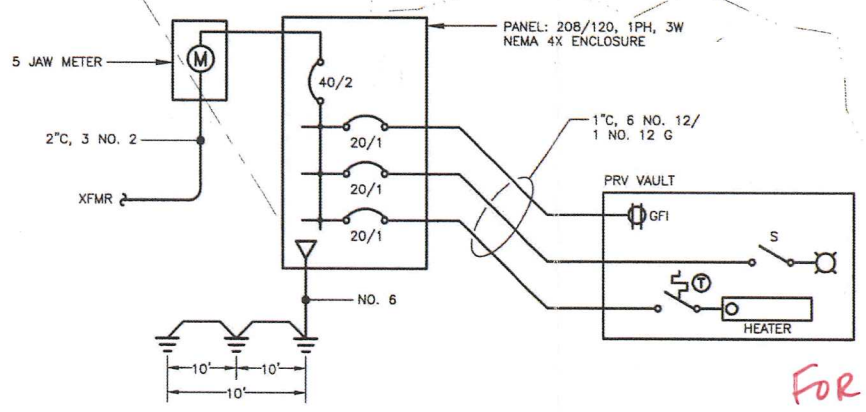
TITLE: **EXISTING SITE PLAN - ELECTRICAL SYSTEMS**

DESIGNED BY: BCH	PROJECT NO: 114018.01	SHEET NO:
DRAWN BY: PEL	DATE: APRIL, 2013	<b>E1.01</b>
CHECKED BY: BCH	SCALE: NOTED	

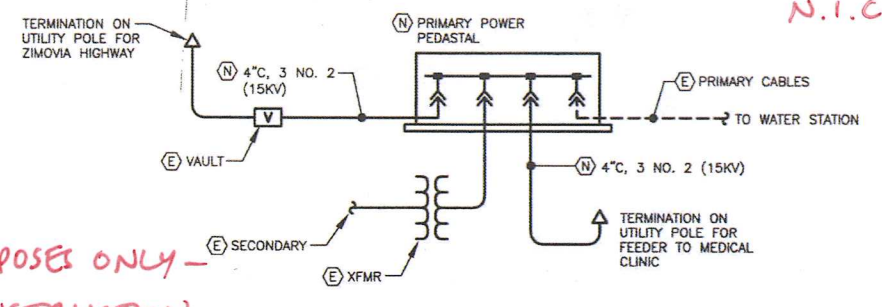
Apr 17, 2013 - 11:32am  
F:\Projects\137\_PN&D\WB Wood Street Road & Utility Improvements\Drawings\Working\E2.01.dwg (Lypout1.tbx)



1 NEW SITE PLAN SCALE: 0 20' 40'



2 SINGLE LINE DIAGRAM - PRV VAULT



2 SINGLE LINE DIAGRAM - POWER

FOR BID PURPOSES ONLY - NOT FOR CONSTRUCTION



1736 Fourth Avenue S., Suite A  
Seattle, Washington 98134  
Phone: 206-624-1387  
Fax: 206-624-1388  
mail@pndengineers.com



**HAIGHT & ASSOCIATES**  
CONSULTING ELECTRICAL ENGINEERS  
526 Main Street, Juneau, AK 99801  
(907) 586-9788

PND ENGINEERS, INC. IS NOT RESPONSIBLE FOR SAFETY PROGRAMS, METHODS OR PROCEDURES OF OPERATION, OR THE CONSTRUCTION OF THE DESIGN SHOWN ON THESE DRAWINGS. WHERE SPECIFICATIONS ARE GENERAL OR NOT CALLED OUT, THE SPECIFICATIONS SHALL CONFORM TO STANDARDS OF INDUSTRY. DRAWINGS ARE FOR USE ON THIS PROJECT ONLY AND ARE NOT INTENDED FOR REUSE WITHOUT WRITTEN APPROVAL FROM PND. DRAWINGS ARE ALSO NOT TO BE USED IN ANY MANNER THAT WOULD CONSTITUTE A DETRIMENT DIRECTLY OR INDIRECTLY TO PND.

REVISIONS		
REV.	DATE	DESCRIPTION

PROJECT: <b>WOOD STREET IMPROVEMENT DESIGN</b>			
TITLE: <b>NEW SITE PLAN - ELECTRICAL SYSTEMS</b>			
DESIGNED BY: BCH	PROJECT NO: 114018.01	SHEET NO: <b>E2.01</b>	
DRAWN BY: PEL	DATE: APRIL, 2013		
CHECKED BY: BCH	SCALE: NOTED		

