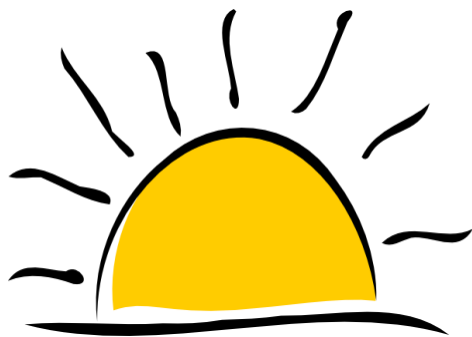


SHOEMAKER BAY RV PARK & RECREATION SITE



Shoemaker Bay Recreation Area is located at 4.5 mile Zimovia Highway. The area features two RV park areas, camping spaces, a large harbor for pleasure and commercial craft, tennis court, picnic area, public restrooms, beach area for swimming, and a magnificent view of Zimovia Strait, and the entrance to Chichagof Strait between the islands of Etolin and Woronofski. Across the highway, is the trailhead for Rainbow Falls Trail, which joins the Institute trail for a 3.5 mile hike up to Shoemaker Bay observation site and shelter.

Wrangell Municipal Code, Section 13.12.030 allows up to 10 days in the RV parks and five days in the tent campground at Shoemaker Bay. We do not allow overnight RV parking in the parks but do allow 48-hour tent camping at City Park, just south of Heritage Harbor.

With prior notification the 10-day length of stay might be extended. Our facilities are not intended for long-term parking. There are trailer courts for extended periods of time.

The Parks and Recreation Department, which is fairly new and still growing, has a total of 53 acres of park land. Our facilities include; an indoor swimming pool, racquetball court, weight room, gym and an indoor and outdoor shooting range (indoor range is only open in the winter months), two tennis courts, ball fields, park shelters, a number of parks two trails in town, and a kayak/canoe portage trail. In addition to our facilities, other recreational facilities throughout Wrangell include a number of hiking trails, and a 9-hole golf course.

In the past several years we have had a number of parks developed by the former Alaska Pulp Corporation. These parks have all been constructed using reusable wood products and include the Outdoor Shooting Range, Volunteer Park, Muskeg Meadows Golf Course, as well as our RV Park.

In addition to our parks, the US Forest Service has a number of campgrounds and trails you might be able to take in during your stay. During the summer months the Forest Service provides naturalists on board the ferries who offer information about the various communities in Southeast Alaska.

If you have any questions about Wrangell or other towns and sites in Southeast Alaska, please feel free to contact us. If we cannot answer the question, we will try to send you in the right direction. Thanks for visiting Wrangell. We hope you have an enjoyable stay



320 Church St.
Wrangell, Alaska 99929
RV Park Located at 4.5 Mile Zimovia Highway

Phone: 907-874-2444
Fax: 907-874-3186
E-mail: KThomas@Wrangell.com

CITY OF WRANGELL PARKS & RECREATION

WELCOME TO WRANGELL ISLAND



*Supporting active lifestyles through
a variety of health, wellness and
wilderness opportunities.*

Tel: 907-874-2444

SHOEMAKER BAY RV PARK AND RECREATION SITE

The Park and Recreation Department would like to welcome you to Wrangell and offer some information about our RV park, tent campground, Wrangell, and the department itself.

There are 25 spaces available for RVs. We have nine spaces, located in the Shoemaker Harbor parking lot. There are sixteen spaces, just north and adjacent to the Shoemaker Harbor parking area. In addition to the RV sites we do have an area for tent camping. There are spaces for six tents located across from the RV stalls in Shoemaker Harbor parking area.

For those needing electricity, the sixteen stalls in the north parking area have electrical hook-ups. The fee for these spaces is \$30.00 per day. Those located in the harbor parking lot, without electricity, are \$20.00 per day. Fees are to be paid daily. Please deposit money in the pipe safe where your vehicle is parked. All sites are checked daily and your receipt must be displayed in the window of your vehicle.

Please note that there is no restroom or dump station directly in the RV camping area; however, there is potable water and a dump station located next to the non-electric camping stalls in the Shoemaker Harbor parking area. In addition to the dump station and water, restroom facilities are located in the Shoemaker Harbor parking lot.

For those staying in the RV parks, we offer the use of our Pool Facility, which includes the swimming pool, weight room, and showers, at no charge (see attached schedule). When using this facility, we ask that you bring in your parking stub and present it to the staff member on duty.

Note: From time to time, the swimming pool facility is closed for maintenance events. If you happen to be staying in the RV Park during that time, there will be no discount due of the closure of the facility and lack of its use.

NORTH RV PARK

Entrance located just off to the right (water side) from Zimovia highway before you reach the harbor parking lot entrance. This park is wooded and overlooks the water. Most spaces have views. Restrooms are located in the harbor parking lot, about a 80 yard walk. There is also potable water and a dump station in the harbor parking lot. Fees for these spaces, numbers 1-16, are \$30.00 a day and include free entrance to use the swimming pool and recreation facility, including the weight room and showers. Please show your paid RV ticket stub for free admittance.

HARBOR RV PARK

Enter through the harbor parking lot. RV area is to your left along the trees and creek line. There are no electrical hook-ups, but potable water and a dump station are real close. Restrooms are just a short walk in the harbor parking lot. Fees



for these spaces, numbers 17-25, are \$ 20.00 per day and include free entrance to use the swimming pool and recreation facility, including the weight room and showers. Please show your paid RV ticket stub for free admittance.

North RV Park Site Info

| # | Size of space | # | Size of space |
|---|----------------|----|---------------|
| 1 | 13x15 –back in | 9 | 17x42–back in |
| 2 | 13x32–back in | 10 | 17x42–back in |
| 3 | 13x24–back in | 11 | 14x48–back in |
| 4 | 16x19–back in | 12 | 15x48–back in |
| 5 | 11x24–back in | 13 | 13x70–back in |
| 6 | 15x24–drive in | 14 | 14x70–back in |
| 7 | 15x25–drive in | 15 | 17x30–back in |
| 8 | 16x40–back in | 16 | 13x46–back in |

Harbor RV Park Site Info

| | | | |
|----|-------|----|-------|
| 17 | 15x25 | 22 | 14x25 |
| 18 | 13x25 | 23 | 14x25 |
| 19 | 14x25 | 24 | 13x25 |
| 20 | 13x25 | 25 | 13x25 |
| 21 | 14x25 | | |

CITY OF WRANGELL PARKS & RECREATION

320 Church St.
Wrangell, Alaska 99929

Phone: 907-874-2444
Fax: 907-874-3186
E-mail: KThomas@Wrangell.com