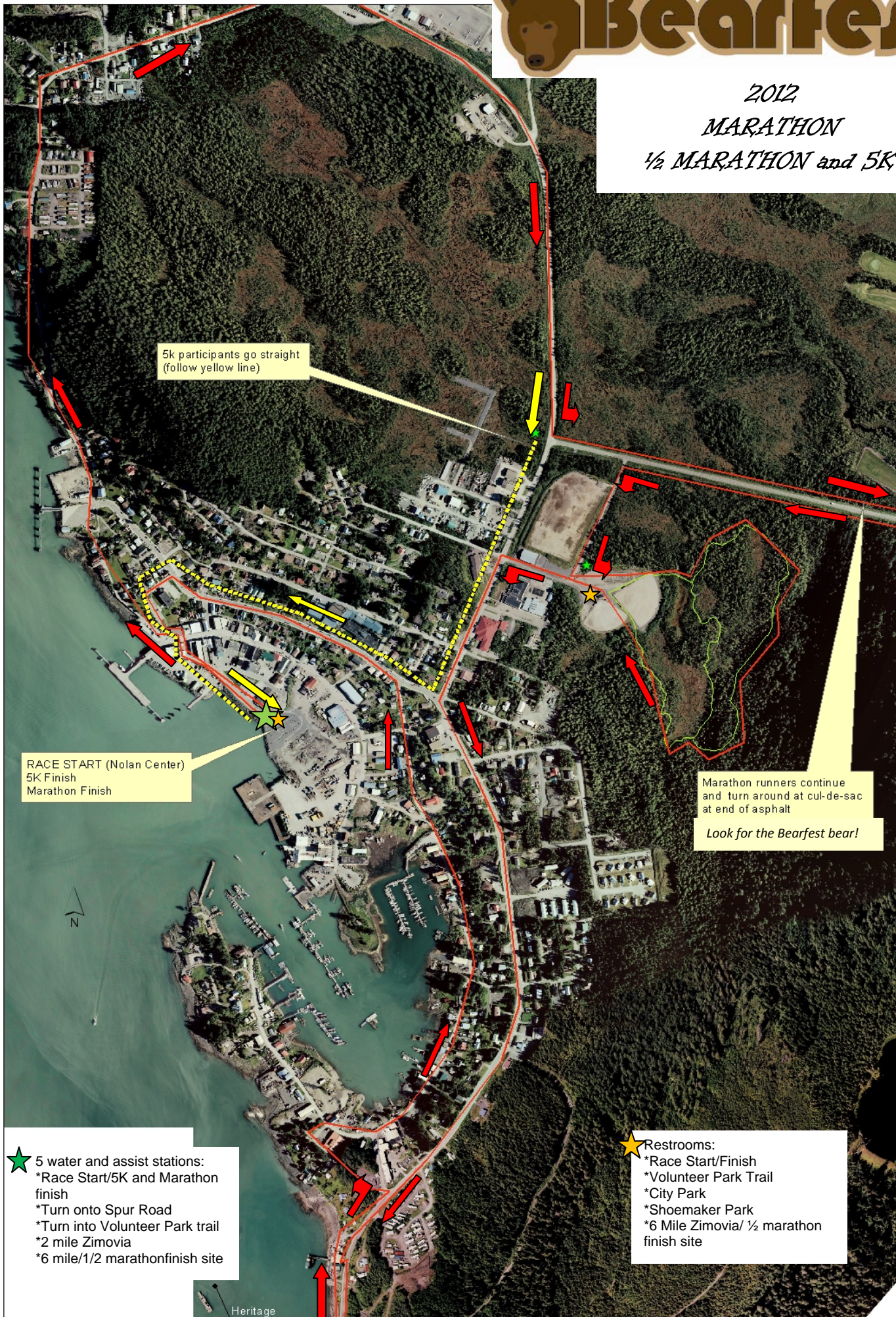




2012
MARATHON
½ MARATHON and 5K



5k participants go straight
(follow yellow line)

RACE START (Nolan Center)
5K Finish
Marathon Finish

Marathon runners continue
and turn around at cul-de-sac
at end of asphalt

Look for the Bearfest bear!

- ★ 5 water and assist stations:
- *Race Start/5K and Marathon finish
 - *Turn onto Spur Road
 - *Turn into Volunteer Park trail
 - *2 mile Zimovia
 - *6 mile 1/2 marathon finish site

- ★ Restrooms:
- *Race Start/Finish
 - *Volunteer Park Trail
 - *City Park
 - *Shoemaker Park
 - *6 Mile Zimovia/ ½ marathon finish site